

**COLORADO STATE AND PRIVATE LAND FIRES**

<b>YEAR</b>	<b>MONTH</b>											
<b>2003</b>	<b>1</b>	<b>2</b>	<b>3</b>	<b>4</b>	<b>5</b>	<b>6</b>	<b>7</b>	<b>8</b>	<b>9</b>	<b>10</b>	<b>11</b>	<b>12</b>
NUMBER	138	90	203	189	235	218	501	268	81	150	54	23
ACRES	138	87	693	423	152	756	5049	4456	116	4181	43	10
<b>2002</b>												
NUMBER	130	255	472	727	409	447	371	263	118	59	36	48
ACRES	376	1202	9557	7811	53727	153491	13686	2813	1542	8	13	13
<b>2001</b>												
NUMBER	129	78	201	344	223	522	650	311	179	181	96	39
ACRES	38	79	590	4041	329	1303	3274	32354	2317	1329	111	51
<b>2000</b>												
NUMBER	55	126	141	268	165	265	374	389	147	54	35	24
ACRES	1050	3368	4360	5467	1463	26434	9783	11799	12477	65	13	9
<b>1999</b>												
NUMBER	102	242	483	164	121	190	349	121	84	163	122	20
ACRES	4134	6607	6278	423	44	832	3424	179	473	5294	7563	10
<b>1998</b>												
NUMBER	48	74	188	169	198	214	232	72	83	27	23	21
ACRES	58	201	1936	691	4665	225	934	292	197	558	515	10
<b>1997</b>												
NUMBER	68	88	326	130	149	179	381	110	66	56	24	28
ACRES	22	138	4261	1278	1552	4766	3482	572	288	330	7	7
<b>1996</b>												
NUMBER	126	186	384	389	261	237	329	308	120	85	50	24
ACRES	3303	8794	5118	11394	3233	1063	1701	13523	628	521	33	187

YEAR	MONTH											
	1	2	3	4	5	6	7	8	9	10	11	12
<b>1995</b>	109	185	255	169	113	144	386	407	255	170	90	85
NUMBER ACRES	148	945	651	359	42	89	3173	18466	6518	3031	667	204
<b>1994</b>	193	121	497	296	184	394	786	270	192	111	81	65
NUMBER ACRES	377	117	3122	1659	303	7124	35798	3110	433	74	39	28
<b>1993</b>	25	23	181	185	130	158	253	114	96	57	27	18
NUMBER ACRES	8	6	427	1156	110	327	891	201	97	218	55	30
<b>1992</b>	25	66	79	193	126	111	171	116	74	46	11	2
NUMBER ACRES	5	32	136	1471	614	89	245	1245	62	223	13	0
<b>1991</b>	44	89	263	224	171	105	205	110	70	106	16	3
NUMBER ACRES	1115	868	1782	990	229	94	322	595	42	747	2	1
<b>1990</b>	64	63	213	152	157	254	252	127	74	52	47	19
NUMBER ACRES	441	77	1327	791	1477	1701	1025	275	130	69	2487	25

**COLORADO STATE AND PRIVATE LAND FIRES**

YEAR	MONTH											
	1	2	3	4	5	6	7	8	9	10	11	12
2003 NUMBER	138	90	203	189	235	218	501	268	81	150	54	23
2002 NUMBER	130	255	472	727	409	447	371	263	118	59	36	48
2001 NUMBER	129	78	201	344	223	522	650	311	179	181	96	39
2000 NUMBER	55	126	141	268	165	265	374	389	147	54	35	24
1999 NUMBER	102	242	483	164	121	190	349	121	84	163	122	20
1998 NUMBER	48	74	188	169	198	214	232	72	83	27	23	21
1997 NUMBER	68	88	326	130	149	179	381	110	66	56	24	28
1996 NUMBER	126	186	384	389	261	237	329	308	120	85	50	24
1995 NUMBER	109	185	255	169	113	144	386	407	255	170	90	85
1994 NUMBER	193	121	497	296	184	394	786	270	192	111	81	65
1993 NUMBER	25	23	181	185	130	158	253	114	96	57	27	18
1992 NUMBER	25	66	79	193	126	111	171	116	74	46	11	2
1991 NUMBER	44	89	263	224	171	105	205	110	70	106	16	3
1990 NUMBER	64	63	213	152	157	254	252	127	74	52	47	19
Average per Month	90	120	278	257	189	246	374	213	117	94	51	30

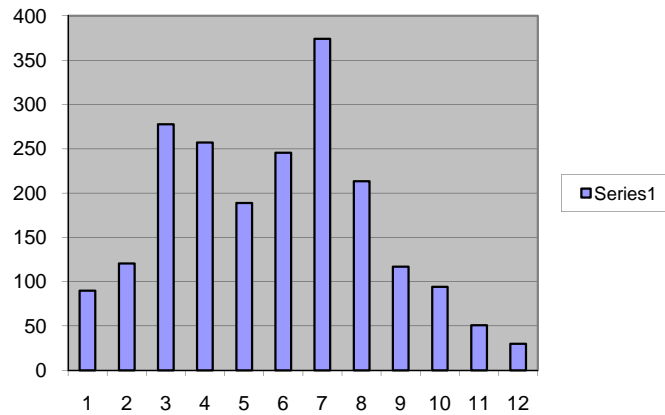
**COLORADO STATE AND PRIVATE LAND FIRES**

YEAR	MONTH											
	1	2	3	4	5	6	7	8	9	10	11	12
<b>2003 ACRES</b>	138	87	693	423	152	756	5049	4456	116	4181	43	10
<b>2002 ACRES</b>	376	1202	9557	7811	53727	153491	13686	2813	1542	8	13	13
<b>2001 ACRES</b>	38	79	590	4041	329	1303	3274	32354	2317	1329	111	51
<b>2000 ACRES</b>	1050	3368	4360	5467	1463	26434	9783	11799	12477	65	13	9
<b>1999 ACRES</b>	4134	6607	6278	423	44	832	3424	179	473	5294	7563	10
<b>1998 ACRES</b>	58	201	1936	691	4665	225	934	292	197	558	515	10
<b>1997 ACRES</b>	22	138	4261	1278	1552	4766	3482	572	288	330	7	7
<b>1996 ACRES</b>	3303	8794	5118	11394	3233	1063	1701	13523	628	521	33	187
<b>1995 ACRES</b>	148	945	651	359	42	89	3173	18466	6518	3031	667	204
<b>1994 ACRES</b>	377	117	3122	1659	303	7124	35798	3110	433	74	39	28
<b>1993 ACRES</b>	8	6	427	1156	110	327	891	201	97	218	55	30
<b>1992 ACRES</b>	5	32	136	1471	614	89	245	1245	62	223	13	0
<b>1991 ACRES</b>	1115	868	1782	990	229	94	322	595	42	747	2	1
<b>1990 ACRES</b>	441	77	1327	791	1477	1701	1025	275	130	69	2487	25
average by month	801	1,609	2,874	2,711	4,853	14,164	5,913	6,420	1,809	1,189	826	42

**COLORADO STATE AND PRIVATE LAND FIRES  
1990 - 2003 YEARS**

	<b>MONTH</b>											
	<b>1</b>	<b>2</b>	<b>3</b>	<b>4</b>	<b>5</b>	<b>6</b>	<b>7</b>	<b>8</b>	<b>9</b>	<b>10</b>	<b>11</b>	<b>12</b>
14 year average number per Month	90	120	278	257	189	246	374	213	117	94	51	30
14 year average acres per month	801	1,609	2,874	2,711	4,853	14,164	5,913	6,420	1,809	1,189	826	42

**Number Fires by Month**



**Acres by Month**

