

Gould Area Community Wildfire Protection Plan

October 2006

Gould Area Community Wildfire Protection Plan

Introduction

Members of the Gould community, in consultation with local, state and federal agencies and other interested parties have collaboratively developed the Gould Area Community Wildfire Protection Plan (CWPP). This CWPP was created according to the guidelines of *Preparing a Community Wildfire Protection Plan, A Handbook for Wildland-Urban Interface Communities*, March 2004, Communities Committee, National Association of Counties, National Association of State Foresters, Society of American Foresters, Western Governors' Association. The handbook was designed to lead the community through a process that includes eight steps to completion of a CWPP. Several public meetings were held to guide the community through the eight steps. Debbie Alpe, Jackson County Extension Agent, Colorado State University Cooperative Extension facilitated the CWPP meetings. Technical assistance was provided by Curran Trick, Jackson County GIS Department. The *Jackson County Fire Plan* and the *Jackson County Firefighters Response Guide* were both completed in 2003. The Gould Area CWPP supplements and enhances the information presented in these county documents. All resource materials used are listed in the Appendix.

The Healthy Forest Restoration Act (HFRA) directs the federal agencies to collaborate with communities in developing hazardous fuel reduction projects, and in the prioritization of treatment areas as defined by a community's CWPP. It identifies strategies for reducing wildfire fuels while improving forest health, supporting local industry and economy, and improving fire fighting response capabilities.

Objectives of the Gould Area Community Wildfire Protection Plan

- Engage in comprehensive forest planning and prioritization.
- Provide mechanism for federal agencies to give meaningful considerations to community priorities.
- Facilitate open community discussion regarding management options.
- Provide maximum flexibility for communities to determine the substance and detail of their plans.
- Merge the goals and objectives of the landowners with the needs and expectations of the community regarding fire risk reduction.
- Coordinate fire protection strategies across property boundaries.
- Coordinate the grant funding and federal program budgets to achieve the most effective results with limited funding.

Development of the Plan

The CWPP Handbook specifically outlines eight steps community members should take to complete a viable CWPP. The Gould community elected to utilize this eight step approach to guide their CWPP process. By following this facilitated approach, the community and agency partners engaged in focused discussion related to all critical CWPP topics and succeeded in developing a plan that genuinely reflects the concerns and recommendations of the Gould Area. The entire collaborative process was completed within a six month period between February and July 2006. The eight steps to completion are outlined in the following sections.

Step 1- Decision Makers Convened

The decision makers for this CWPP are listed below. These officials were notified on February 7, 2006 and invited to participate in the development of this plan.

- Local Government: Jackson County Board of County Commissioners
- North Park Fire and Rescue Chief: Jeff Benson
- Colorado State Forest Service District Forester: John Twitchell

Step 2 – Federal Agencies Involved

The representatives of the federal agencies managing land in the vicinity of the Gould Area Wildland Urban Interface are listed below. Most of these people attended a widely advertised initial community meeting inclusive of all interested landowners, businesses, and agency people in Jackson County. This meeting was held the morning of Saturday, March 18, 2006 at the North Park High School. The purpose of the meeting was to provide an overview of the CWPP process and to encourage residents of Jackson County to work with key agency representatives to initiate completion of their individual community CWPPs. Federal agency representatives initially invited and subsequently involved include the following people:

Agency	Representative	Date Invited to Participate
Routt-Medicine Bow National Forest	Ann Kiser, Parks District District Ranger	February 7, 2006
Routt-Medicine Bow National Forest	Randy Lownes, Parks District Fire Management Officer	February 7, 2006
Routt-Medicine Bow National Forest	Mark Westfahl, Parks District Forester	February 7, 2006
Routt-Medicine Bow National Forest	Carl Maass, Forester	May 16, 2006
Bureau of Land Management	Lynn Barclay, Fire Mitigation Education Specialist	February 7, 2006
Bureau of Land Management Kremmling Field Office	Bill Wyatt, Fuels Staff, Fire Archaeologist	February 7, 2006
Bureau of Land Management Kremmling Field Office	John Ruhs, Field Manager	February 7, 2006

Step 3a – State and Local Agencies Involved

The representatives of the state/local agencies that have jurisdictional responsibilities in the vicinity of the Gould Area Wildland Urban Interface area are listed below. Most of these people attended the meeting described above held the morning of Saturday, March 18, 2006 at the North Park High School.

Agency	Representative	Date Invited to Participate
Colorado State Forest Service	John Twitchell, Forester	February 7, 2006
Colorado State Forest Service	Brook Lee, Forester	February 7, 2006
Colorado State Forest State Parks	Tim Metzger, Park Ranger	February 7, 2006
CSU Cooperative Extension	Debbie Alpe, Extension Agent	February 7, 2006
Jackson County Commissioner	John Rich	February 7, 2006
Jackson County Commissioner	Naida Crowner	February 7, 2006
Jackson County Commissioner	Mike Blanton	February 7, 2006

Director, Jackson County Emergency Management	Kent Crowder, Jackson County Administrator	February 7, 2006
Jackson County GIS	Curran Trick	May 23, 2006
North Park Fire and Rescue	Jeff Benson, Fire Chief	February 7, 2006
Jackson County Sheriff	Rick Rizor	February 7, 2006

Step 3b – Interested Parties Engaged

The residents from the Gould Area WUI that took leadership roles on the core CWPP planning team are listed below. Landowners who participated in the process by attending one or more meetings, received meeting announcements, agendas, and notes, and/or communicated via telephone or e-mail are listed in the Appendix.

Gould Area CWPP Core Team Members	
Jean Krause - Chair	Marilyn Ayers
Judy Brumfield	Naomi Yager
Buck Brumfield	Billy Roberts
Paul Baker	John Trenary
Richard Clark	Bob Vlasman
Keith Ayers	Jenifer Morrissey

Step 4 –Community Base Map Established

After considering the location of the inhabited areas, the critical human infrastructure and the risk of wildfire, the Gould Area community identified a base map representing a WUI zone around their community assets. Generally, the map forms a large circle including an area approximately 70 square miles bisected by Highway 14 between mile marker 51 and 61. Gould and Whispering Pines Subdivision are located near the center of the WUI. The WUI includes federal, state, and private lands. Natural and man-made barriers used to define the WUI boundary include Porcupine Creek and Owl Mountain to the South. The Western boundary is a North/South line starting from the northwest corner of section 18, Township 7 North, Range 77 West and ending at the southwest corner of section 18, Township 6 North, Range 77 West. Custer Mountain is a prominent geographic feature to the North, and the base of the Medicine-Bow Mountains to the East. The base map of the Gould Area WUI and adjacent landscapes of interest as well as a detailed map of the Whispering Pines Subdivision is included on the following pages. The boundaries of the WUI map include the following values at risk.

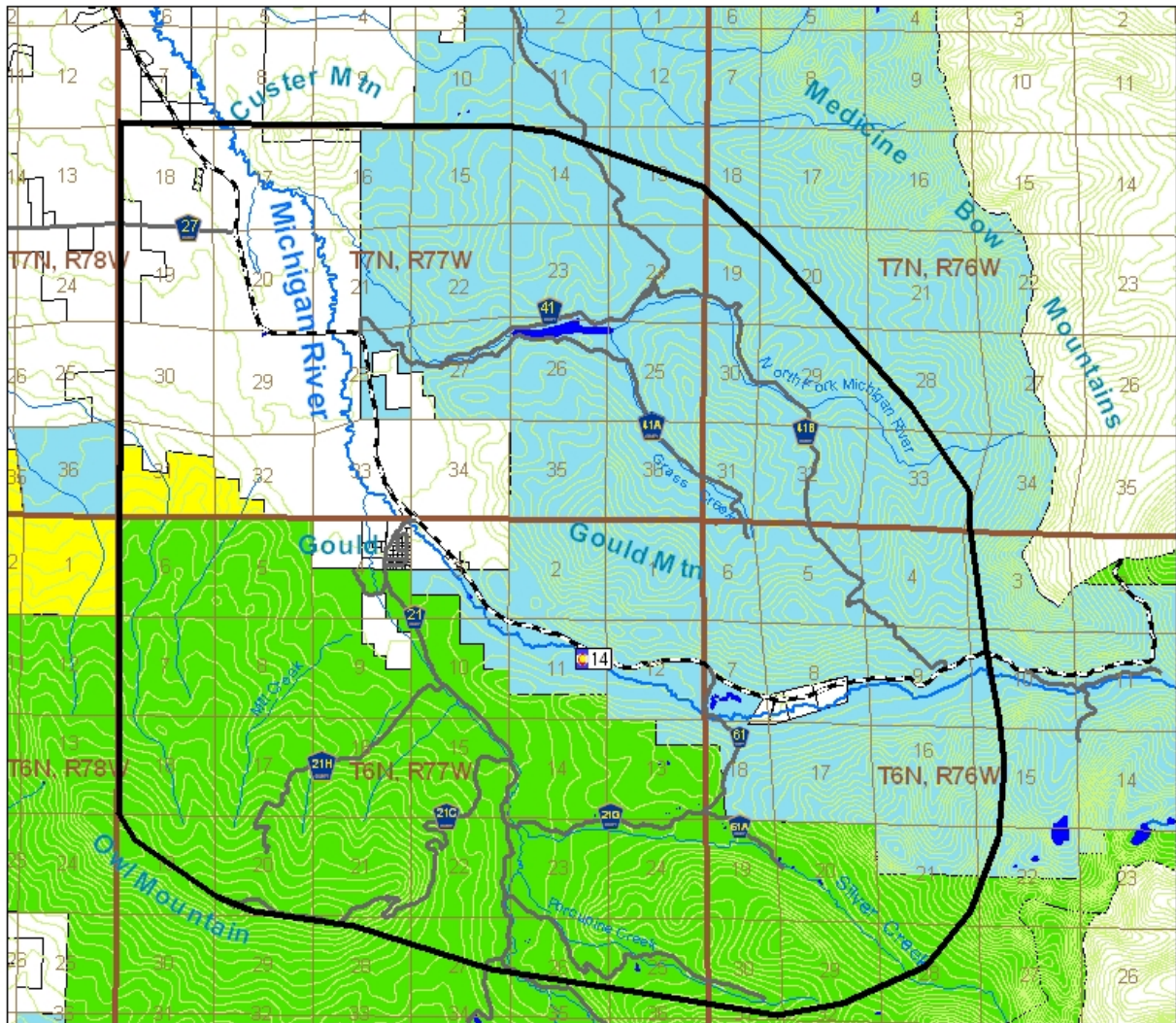
Inhabited areas at potential risk to wildland fire:

- Whispering Pines Subdivision.
- Dispersed private properties with/without cabins, homes and other structures.
- KOA Cabins and Campgrounds.
- State Forest State Parks Headquarters, Moose Visitor Center, Staff Housing and Campground Facilities.
- Colorado State Forest Service Headquarters, Ranger Lakes Complex, Staff Housing, and Campground Facilities.
- Never Summer Nordic Yurts.
- USFS Aspen and Pines Campgrounds facilities and Michigan River Guard Station which is used to house summer seasonal employees.

Areas containing critical human infrastructure and values: escape routes, watersheds and municipal water supplies, viewsheds and power or communication structures. These include:

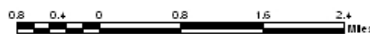
- Colorado State Highway 14 bisects the WUI from mile marker 50 to mile marker 61.
- Jackson County Road 21, 21G, 27, 41 and 61
- USFS Roads
- State Forest Roads
- The Michigan River watershed is the Municipal Water Supply for the Town of Walden and flows through the WUI.
- Mountain Parks Electric, Inc.(MPEI) has various electric lines situated in the WUI. Maps provided by MPEI are included in the Appendix.
- Portions of Gould Mountain, Bull Mountain, Owl Mountain and other high ridges within the WUI are important to the community from both a viewshed and watershed perspective.

Gould Vicinity Wildland Urban Interface



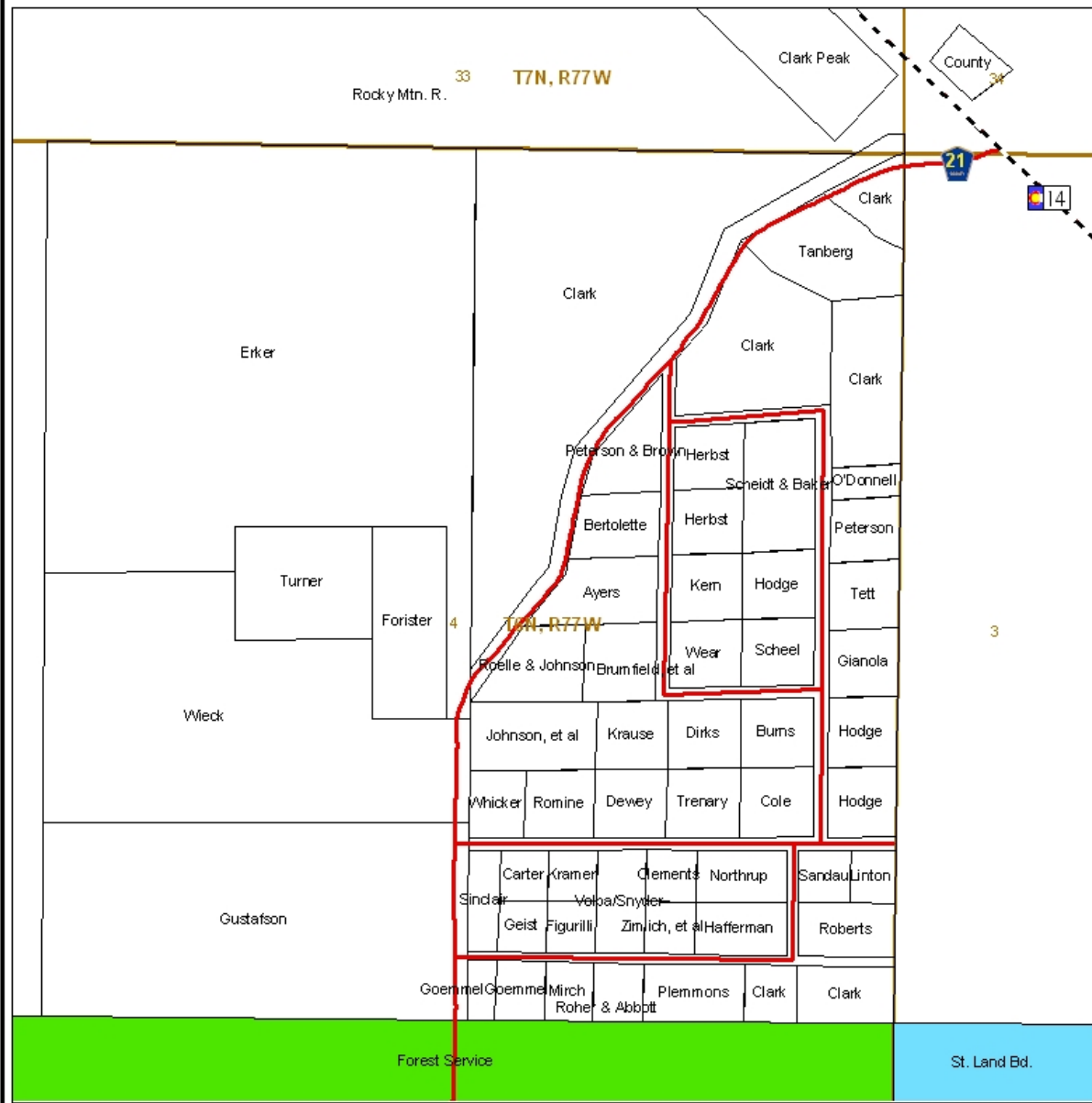
Legend

- | | |
|--|--|
|  Private Lands |  Water |
|  State Lands |  Major River |
|  Forest Service |  Major Stream |
|  BLM Lands |  Township / Range |
|  County Roads |  Sections |
|  State Highways |  100' Contour |
|  US Highways |  WUI Boundary |



The GIS Data which is portrayed herein has been developed solely by Internal Use Only by Jackson County. The County makes no warranty, representation or guarantee, either expressed or implied, as to the completeness, accuracy or consistency of this Data, nor liability or assumed responsibility, including liability for any inaccuracies, loss or damage or other consequences resulting from the use of this Data. The County is not responsible for updates, corrections or changes arising from the use of this Data without notice.

Whispering Pines



Legend

-  Private Land Boundary
-  State HWY 14
-  State Forest
-  County Road
-  USFS
-  Township/Range



The GPS data which is performed herein has been developed solely for internal use only by Jackson County. The County makes no warranties, representations or guarantees, either expressed or implied, as to the completeness, accuracy or correctness of this data, nor accepts any liability for any loss, injury, or damage, that may be caused by the use of this data. The County is not responsible for any loss, injury, or damage, that may be caused by the use of this data.



Step 5 –Community Risk Assessment

Inserted in this section is the Gould Area CWPP Risk Assessment completed during a community meeting Sunday, May 23, 2006 attended by 24 residents (listed in Appendix).

Community protection is the responsibility of everyone involved. CWPPs will facilitate agency decision-making and prioritization of projects. Fire can come from within or without the Gould Area WUI. To follow are some of the hazards and values at risk identified by the community.

Fuel Hazards and Risk of Wildfire Occurrence

- Beetle infestation data and on-the-ground observations by foresters indicate significant Mountain Pine and Spruce Bark Beetle activity resulting in many acres of dead and dying trees in the forests surrounding the Gould Area WUI.
- In addition, area forest health is further negatively impacted by mistletoe infestation as well as the extended drought conditions experienced during the past decade.
- Prevailing winds are from the west and southwest. The forests south and west of the Gould WUI are currently classified as high risk fire areas. Forests to the north and east are considered at less risk of experiencing a wildfire at the present time.
- According to the 2003 Jackson County Fire Plan, the Whispering Pines subdivision is considered a moderate to high fire risk.
- In a lodgepole forest, it is reasonable to expect that a fire will ultimately happen. It is difficult and sometimes impossible to control a crown fire. A wildland fire must be able to transition from crown cover to the ground before control can occur.
- Large scale timber management projects can make the biggest impact toward protecting a community.
- FireWise projects completed by individuals can lend protection to individual homes and neighborhoods as well as lessen the chances of a wildfire starting from within the WUI. Many WUI residents have completed FireWire projects on their property. Recognizing that people cannot be forced to complete FireWise projects on their property, all Gould Area WUI landowners are encouraged to create defensible space and reduce other fire hazards on their personal property.

Homes, Businesses, and Essential Infrastructure at Risk

Homes and Businesses

- To estimate the number of dwelling units in the Gould Area WUI, meeting notices were sent to a mailing list including over 70 landowners.
- Businesses in the WUI include the KOA, the Drifter's Cookhouse, The Cabins retail shops, Powderhorn Cabins, the Colorado State Forest State Park Moose Visitor Center, and the Never Summer Nordic yurts.
- The State Forest Service and Colorado State Parks as well as the USFS Parks District have living quarters and structures within the WUI.

Roads, Driveways and Structures

- In Whispering Pines subdivision, all roads are marked.
- Some addresses are marked within Whispering Pines and the Gould Area WUI.

- All roads are marked in the outlying areas of the Gould Area WUI, including county, state and USFS roads. (A new blue and gold Jackson County Road 21 sign is currently needed on that road—old white sign is small and difficult to see.)
- All roads and driveways are gravel and/or dirt. Highway is paved.
- Presence of snow and mud limit seasonal access to many roads and driveways in the WUI.
- Some driveways meet clearance and turnaround space needs of emergency equipment.
- The county roads and highways support 2 lanes of traffic.
- Roads in the Whispering Pines subdivision and some outlying personal driveways outside the subdivision support only 1 lane of traffic.
- Within Whispering Pines, a one lane loop could be accommodated by designating and utilizing existing roads. There are a few dead end roads within the subdivision and all driveways dead end.
- Some homes and other structures within the WUI have metal as opposed to wood shake or shingle roofs. The Jackson County Fire Plan notes homes in Whispering Pines have 68% metal roofs.
- Most homes are constructed of wood products and have attached wooden decks.
- Some, but definitely not all, houses and other structures are visible from the main roads.

Bridges, Cattle Guards, Culverts, and Gates

- All bridges, cattle guards and culverts will support emergency equipment.
- Some gates are locked.

Utilities

- MPEI has electric lines running above ground on poles. They have provided line maps of the Gould Area WUI (see Appendix).
- Some utilities are underground, including CenturyTel phone services.
- Most propane tanks are above ground and nearly all are placed a safe distance from structures.
- There are no natural gas lines in the Gould Area WUI.

Water

- All homes have wells as a primary water source.
- Gould Fire House has a cistern.
- Colorado State Forest Service headquarters has a 4000 gallon cistern.
- There are some livestock and wildlife ponds present in the WUI. Jerry and Dorothy Hampton, Gary Wyler, and Fred Groth at Drifter's Cookhouse have ponds on their property.
- The Michigan River drainage including all associated creeks, the North Michigan Reservoir, Ranger Lakes and the main stem of the river, is a key feature of the WUI.
- The Michigan River drainage is the municipal water supply for the town of Walden.
- Refer to the Jackson County Fire Plan references to water sources.

Other Community Values at Risk

- Gould Community Center
- Michigan Guard Station
- Old Gould Store
- State Park buildings including the Moose Visitor Center
- Lake Agnes Cabin
- Colorado State Forest buildings
- Michigan Reservoir cabins
- Many campground facilities in the WUI

Local Preparedness and Firefighting Capability

Points Considered

- Generally speaking, the Gould Area WUI has good fire fighting and emergency services capability.
- Designating pre-planned traffic flow evacuation routes would facilitate smoother traffic flow in an emergency.
- Regarding communication systems, most residents have local telephone numbers listed, therefore a reverse 911 communication systems could be used to communicate a fire emergency.
- It was noted that, in the early stages of a potential emergency fire situation, local people might organize a calling tree to keep neighbors informed of fire progress.
- Concerns were expressed by agency representatives regarding use of a neighbor to neighbor phone trees. Fire safety officials would organize and implement communication with WUI residents. It was emphasized that if an evacuation order is ever made, residents must NOT stop to call neighbors.
- Alternative places to initially gather and communicate were discussed.
- The Gould Area WUI does have some animals to consider. Individual livestock and pet owners may wish to develop evacuation plans for their animals as a supplement to their own personal evacuation plans.
- Residents with special needs must be considered including people with specific mobility issues or medical conditions that may require assistance.
- It was noted that post-trauma crisis counseling may be needed in the aftermath of a fire.

Special Citizen Requests

- All associated fire and emergency plans should be advertised as easily accessible for residents to review by placement of copies in the library, the Jackson County Courthouse, fire stations, state and federal forestry facilities, or other strategic community sites.
- Gould Area WUI residents expressed concerns and the need for better fire danger and fire ban signage and placement of signage in the WUI. Larger, more obvious and emphatic fire ban poster signage was requested. The Moose Visitor Center was noted as a potential site for a large wooden fire danger sign.

Step 6 – Community Fire Hazard Reduction Priorities and Recommendations

Inserted in this section are the Gould Area CWPP Priorities and Recommendations endorsed by the community during a meeting Saturday, June 10, 2006 attended by 22 residents (listed in Appendix).

Fuel Treatment Projects

Highest Priorities

- The Gould Stewardship Project contract on the Routt-Medicine Bow National Forest has been secured and work began Summer 2006. Local contractors Don Ewy and Jenifer Morrissey have secured the contract. The project is a fuels reduction and timber project designed to reduce fire behavior within the vicinity of the Whispering Pines subdivision, while maintaining a healthy forest. The project is expected to take 3 years to complete.
- John Twitchell with the Colorado State Forest Service described another fuels mitigation project they began Summer 2006 in conjunction with MPEI along the power lines on the north side of Hwy 14 running from the Moose Visitor Center to the State Forest Headquarters. He described the situation as a steep slope with dying lodgepole trees that are leaning on the power lines in some areas. They have a bid out and plan to cut trees along that strip. The project will mitigate the potential impact of trees falling on the power lines and starting a fire, and will enhance the fire break that is already created by the highway. Visual impacts are being carefully considered.
- Meg Halford with the Colorado State Forest Service announced that MPEI will begin cutting trees the week of June 26, 2006 around the electric lines in the Whispering Pines subdivision. They will chip the wood cut.
- USFS Parks District Ranger Ann Kiser commented on Owl Mountain as being identified as one of the next big analysis projects the FS will get going. Preliminary discussion regarding the planning strategy for Owl Mountain is to break 50,000 acres into smaller projects to facilitate getting analysis and work done more quickly. FS may end up narrowing the initial analysis to the north end of Owl Mountain. No on the ground work is expected to begin for 6-7 years.
- The community supports the Forest Service in actions that will result in on-the-ground fuel hazard reduction as soon as possible. Gould Area WUI residents request and emphasize that projects within the WUI take preference for planning and implementation.
- Establish a fuel break system along roads within the WUI to assist firefighting resources in suppression efforts by establishing anchor points to fight the fire.
- Other Colorado State Forest Service projects include thinning along the Gould Loop and an upcoming project around Lohrs' property. The Gould Loop project will create shaded fuel breaks and will depend on available funding.
- The Colorado State Forest Service will continue to work with the Colorado State Parks in reducing fuel loads in and adjacent to developed recreation areas on the State Forest.
- The Colorado State Forest Service is reviewing a fuel reduction/timber sale project to the east of the Michigan River Ranch.

Projects to Reduce Structural Ignitability

Regarding specific priorities and recommendations beyond those already described above that are in progress or upcoming, Gould community members noted the following projects be completed in the Gould area to reduce structural ignitability.

Highest Priorities

- Private landowners in the Gould Area WUI are encouraged to complete defensible space projects and reduce other fire hazards on their personal property. This includes improving ingress and egress routes for emergency fire services as outlined in the Jackson County Fire Plan.
- Facilitate North Park Fire and Rescue evaluating defensibility of each property in Gould Area WUI. Find funds to support this critical activity.
- Standardize and prominently display address nomenclature for all homes and structures in the Gould Area WUI.
- Remove fuels where Snow Snakes trail was cut.

Other Priorities

- Utilize county and Forest Service roads where feasible as anchors for fuel breaks and fire lines.
- Identify the costs and feasibility of installing dry hydrants in strategic areas.
- Utilize only area designated (by a map to be created and posted) for slash piling in USFS. Pile is for forest waste only and no trash dumping is allowed. Regulation will be accomplished by community self policing.
- Follow-up on any MPEI cutting with proper clean-up of slash.
- Establish proper right-of-way clearance for all power lines in the area.
- Continue to educate the community regarding FireWise concepts.
- Explore becoming a FireWise community.

Emergency Preparedness

Highest Priorities

- Strategically place and identify a system for maintaining a Fire Danger rating sign (similar to the one in Poudre Park). Perhaps this could be done to incorporate a Fire Ban sign when needed. The Moose Visitor Center was noted as a potential spot to place this sign.
- Encourage residents to put together individual evacuation plans including addressing any existing pet and livestock issues. Dina Bennett is willing to serve as a resource in addressing animal issues.
- Ensure with the appropriate agencies, that emergency notification procedures and evacuation plans are in place and clearly understood by residents.

Other Priorities

- Support the Gould Fire Fighters of the North Park Fire and Rescue and encourage full-time residents to become volunteers. Fire response in Gould and Whispering Pines is typically ½ hour.

- Assist the fire department by following FireWise homeowner guidelines and create defensible space around homes and structures.
- Identify a pre-established evacuation destination.
- Identify community members to serve as key communicators in the event of a fire requiring evacuation to help monitor a check off list of residents as they are leave.
- Identify residents in WUI that may have mobility issues. Inform North Park Fire and Rescue regarding residents who have mobility issues so that they can include that information in the books they carry in the trucks.
- State Forest State Parks and USFS will be responsible for communication with campground, forest and park visitors.
- Establish Michigan River Ranch as a first stage evacuation destination unless otherwise instructed by fire safety officials.
- Create and disseminate a map highlighting alternate evacuation routes.
- Gould community members should discuss development of emergency preparedness/evacuation plans.
- Identify how to deal with livestock evacuation if owners are absent and a fire occurs.
- In the event of a fire and an evacuation, residents should use the route that is the shortest distance between their property and an exit road. They should then stay to the right, get out to a county road or highway, keep moving and do not stop as stopping to talk may cause congestion and impede evacuation.
- Designate a community “walkie-talkie” style radio frequency or channel that could be used to facilitate communication between residents.
- Gould area residents request all roads are properly maintained with signage, including that requested on Jackson County Road 21.

The tables below outlines Gould Area WUI projects, responsible parties and level of priority for implementation.

Fuel Treatment Projects

Project or Activity	Responsible Party	Priority Level
Gould Stewardship Project	USFS and contractors	High
CO Highway 14 power line fuels mitigation project	CSFS, MPEI and CDOT	High
Trimming trees on power lines in Whispering Pines	MPEI	High
Planning and implementation of Owl Mountain projects to reduce fuel hazards	USFS	High
Develop fuel break system along roads in WUI	USFS, BLM, CSFS and Jackson County	High
Implement fuel break projects along Gould Loop, near Lohrs’ property, adjacent to developed recreation areas, and east of Michigan River Ranch	CSFS, Colorado State Parks, private landowners	High

Projects to Reduce Structural Ignitability

Project or Activity	Responsible Party	Priority Level
Create defensible space and reduce fire hazards on private property	CSFS, NP Fire and Rescue and Private landowners	High
Evaluate defensibility of private property	CSFS, NP Fire and Rescue and Private landowners	High
Post standardized address signs	Private landowners, Jackson County	High
Remove fuels along Snow Snakes trail project	Snow Snakes	High
Research cost and feasibility of dry hydrant placement	CSFS, NP Fire and Rescue	Other
Monitor use of USFS slash piling area	Gould Area residents, CSFS and USFS	Other
Ensure proper handling of power and electric line slash generated during hazard reduction projects	Gould Area residents, CSFS and MPEI	Other
Establish proper right-of-way clearance for all power lines in the area.	MPEI and CDOT	Other
Educate community about Fire Wise concepts	CSFS, NP Fire and Rescue, CSU Extension	Other

Projects to Increase Emergency Preparedness

Project or Activity	Responsible Party	Priority Level
Post standardized address signs	Private landowners, Jackson County	High
Secure and post large wooden Fire Danger rating sign at Moose Visitor Center (similar to Poudre Park sign)	USFS, CSFS and Colorado State Parks	High
Develop Gould Area individual and community evacuation plans	Landowners, NP Fire and Rescue CSFS, Jackson County,	High
Recruit Gould Area residents to become members of NP Fire and Rescue	Gould Area residents and NP Fire and Rescue	Other
Identify community members to serve as communication liaisons in the event of evacuation	Gould Area residents	Other

Identify residents with mobility issues and inform NP Fire and Rescue	Gould Area residents	Other
Designate a community walkie-talkie style radio frequency or channel to facilitate resident communication	Gould Area residents	Other
Properly maintain road signage	Whispering Pines residents, Jackson County, USFS, BLM and CSFS	Other

Step 7 – Action Plan and Assessment Strategy

- The Gould Area community recommends all above stated priorities be considered for projects to accomplish in this WUI. All projects listed are considered valuable and important to the residents of this WUI. Private residents, Jackson County, North Park Fire and Rescue, Colorado State Forest Service, Colorado Division of Parks and Outdoor Recreation, the Bureau of Land Management, and the Routt-Medicine Bow National Forest will be responsible for initiating projects based on land ownership and/or jurisdiction.
- The community recognizes that all private individuals, Jackson County, and partnering agencies experience budget constraints. However, the projects listed in this CWPP are considered critical and important in the effort to protect life and property in the Gould Area and therefore deserve immediate attention.
- The Gould Area community recommends that projects listed above as *Highest Priorities* be completed immediately in 2006-2007.
- Projects listed above as *Other Priorities* are projects that may be accomplished immediately or may require further community and/or agency collaboration and action prior to implementation.
- The Gould Area community will review and assess progress on recommended projects and update their CWPP during their semi-annual meeting in July. All partnering agencies are strongly encouraged to participate by providing updates during this annual meeting.

Step 8 – Finalizing the Community Wildfire Protection Plan

The Gould Area Community Wildfire Protection Plan:

- Was collaboratively developed. Interested parties and federal land management agencies managing land in the vicinity of Gould have been invited to participate and provide input to the process by mail, e-mail, telephone, and face to face during CWPP meetings.
- Identified and prioritized areas for hazardous fuel reduction treatments and recommends the types and methods of treatment that will protect the Gould Area.
- Recommends measures to reduce the ignitability of structures throughout the area addressed by the plan.

Signatures

The following mutually agree with the contents of this Gould Area Community Wildfire Protection Plan: **Signatures are on file at the Colorado State Forest Service, Steamboat Springs District Office, PO Box 773657, 1475 Pine Grove Road, Ste. 201A, Steamboat Springs, CO, 80477-3657, (970) 879-0475**

Jackson County Board of County Commissioners

Naida L. Crowner _____ Date _____
Signature

Michael A. Blanton _____ Date _____
Signature

John C. Rich _____ Date _____
Signature

Fire Chief, North Park Fire and Rescue

Jeff Benson _____ Date _____
Signature

District Forester, Colorado State Forest Service

John Twitchell _____ Date _____
Signature

Jackson County Administrator/Director of Emergency Management for Jackson County

Kent Crowder _____ Date _____
Signature

Jackson County Sheriff

Rick Rizor _____ Date _____
Signature

District Ranger, Parks District, Routt-Medicine Bow National Forest

Signature Date_____

Field Manager, Kremmling Field Office, Bureau of Land Management

John F. Ruhs _____
Signature Date_____

President, Gould Community Association

Richard Clark _____
Signature Date_____

Appendix

Resource Materials Used

- *Healthy Forest Restoration Act of 2003*
- *Preparing a Community Wildfire Protection Plan, A Handbook for Wildland-Urban Interface Communities*, March 2004; Communities Committee, National Association of Counties, National Association of State Foresters, Society of American Foresters, Western Governors' Association
- *Community Wildfire Protection Plans-Guidelines for Implementation*, Colorado State Forest Service, August 2005
- *Community Fire Planning Workbook*, State of Utah, Department of Natural Resources, Division of Forestry, Fire and State Lands.
- California Fire Alliance website CWPP template, www.cafirealliance.org.
- *Leaders Guide Supplement*, International Association of Fire Chiefs
- *Jackson County Fire Plan, 2003*
- *Jackson County Firefighters Response Guide, 2003*

**Gould Area CWPP Organizational Meeting
March 23, 2006, Moose Visitor Center in Gould
Participant List**

Listed in order of sign up sheet:

1. Marilyn and Keith Ayers
2. Judy and Buck Brumfield
3. Jean Krause
4. Paul Baker,
5. Bob Vlasman
6. Greg Graves
7. Deb Alpe

**Gould Area CWPP Risk Assessment
May 23, 2006, Moose Visitor Center in Gould
Participant List**

Listed in order of sign up sheet:

1. Marilyn and Keith Ayers
2. Shirley and Loren Anderson
3. Meg Halford
4. Jean Krause
5. Bonnie Jean Neighbors
6. Buck Brumfield
7. Dirk Ramsey
8. Mark Loveall
9. Jerry Hampton
10. Mel and Gladys Geist
11. Paul Baker
12. Brook Lee
13. Curran Trick
14. Heath Kehm
15. John Rich
16. Richard Clark
17. Naomi Yager
18. John Twitchell
19. Anne Kiser
20. Deb Alpe

Gould Area CWPP Priorities and Recommendations
June 10, 2006, Moose Visitor Center in Gould
Participant List

Listed in order of sign up sheet:

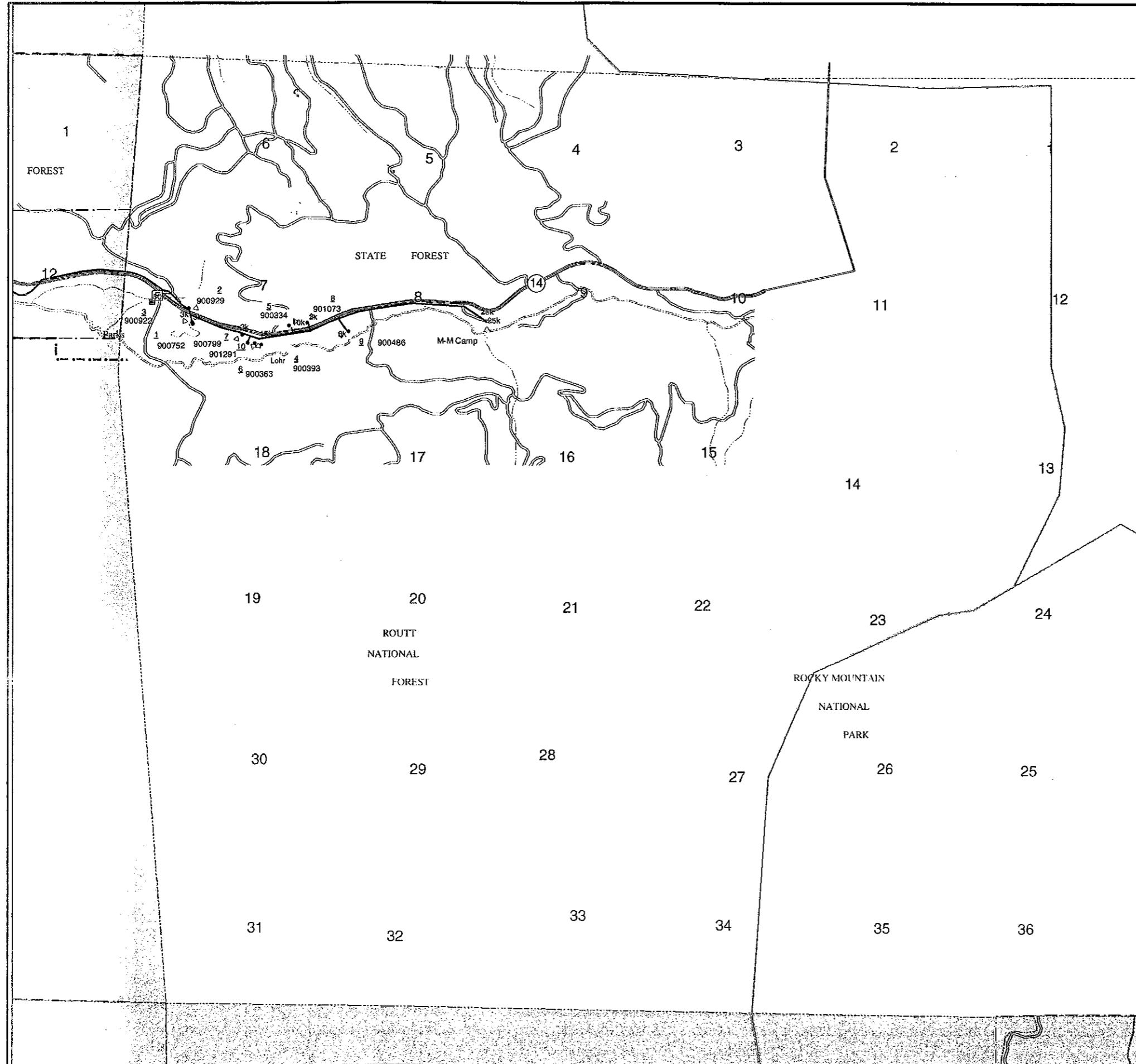
1. Marilyn and Keith Ayers
2. Mel and Gladys Geist
3. Vanessa R. Lenhart
4. Gary Keefer
5. June and Clarence Brown
6. Paul Baker
7. Carl Nilson
8. Jeff Benson
9. Mark Rohrer
10. Dina Bennett
11. Bernard Gateau
12. Judy Brumfield
13. Don Ewy
14. Jenifer Morrissey
15. Anne Kiser
16. John Twitchell
17. Levi Twitchell
18. Kirk Forister
19. Jean Krause
20. Deb Alpe

**Gould Area CWPP Draft Review
July 22, 2006, Gould Community Center
Participant List**

Listed in order of sign up sheet:

1. Marilyn and Keith Ayers
2. Paul Baker
3. June and Clarence Brown
4. Judy and Bucky Brumfield
5. Richard Clark
6. Susan & Dan Galecki
7. Dorothy & Jerry Hampton
8. Heath Kehm
9. Jean Krause
10. John Lohr
11. Toni Neri
12. LaDonna & Lonnie Owens
13. Kerry Plemmons
14. John Rich
15. Pennie and Dick Snavely
16. Tex Swart
17. Carol Twitchell and Levi
18. Naomi Yager
19. Deb Alpe

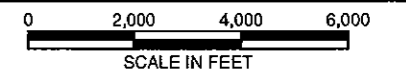
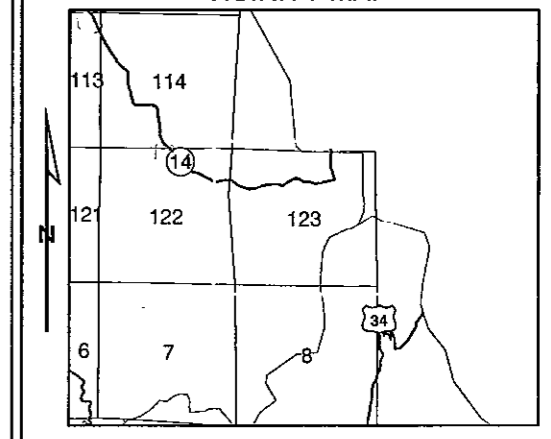
**Gould Area CWPP
Mountain Parks Electric, Inc.
Electric Line Maps**



Legend

- | | | |
|------------------------|-------------------------|---------------------|
| 12967 | ● Meter | — Unknown Phase |
| ○ Pole | ◀ Riser | - - - A phs UG Line |
| ◻ Capacitor | ◻ Fuse | - - - B phs UG Line |
| ◻ RE Recloser-Elec | ◻ RH Recloser-Hyd | - - - C phs UG Line |
| ◻ SE Sectlizr-Elec | ◻ SH Sectlizr-Hyd | - - - V phs UG Line |
| ⊙ Switch | ⊙ GOAB Switch | - - - 3 phs UG Line |
| ▽ 1ph OH Transformer | ◻ 1phs UG Transformer | — A phs OH Line |
| ◻ 3phs OH Transformer | ◻ 2-3phs UG Transformer | — B phs OH Line |
| ◻ Vault | ◻ 1 Phs Sector | — C phs OH Line |
| ◻ 3 Phs Sector | ◻ SG SwitchGear | — V phs OH Line |
| ◻ VR Voltage Regulator | () Normal Open | — 3 phsE OH Line |
| ⊕ Fault Indicator | | — Transmission Line |

VICINITY MAP



TOWNSHIP MAP

STATE & COUNTY	TOWN/RANGE	DWG NUMBER
COLORADO JACKSON	T6N R76W	123

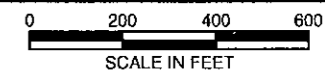
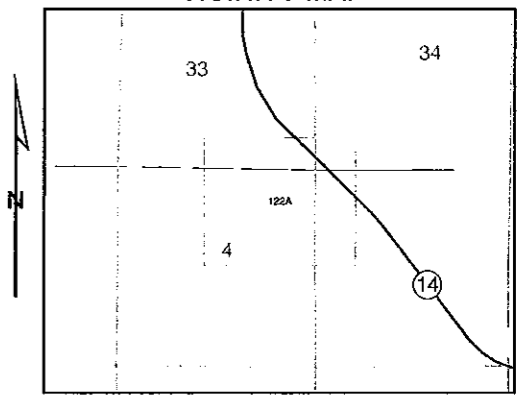


DRAFTED BY: NLF DIR DIST: 3
 DATE: 01-04 APP'D BY: LAS
 # OF METERS: 49 CO MAP:

Legend

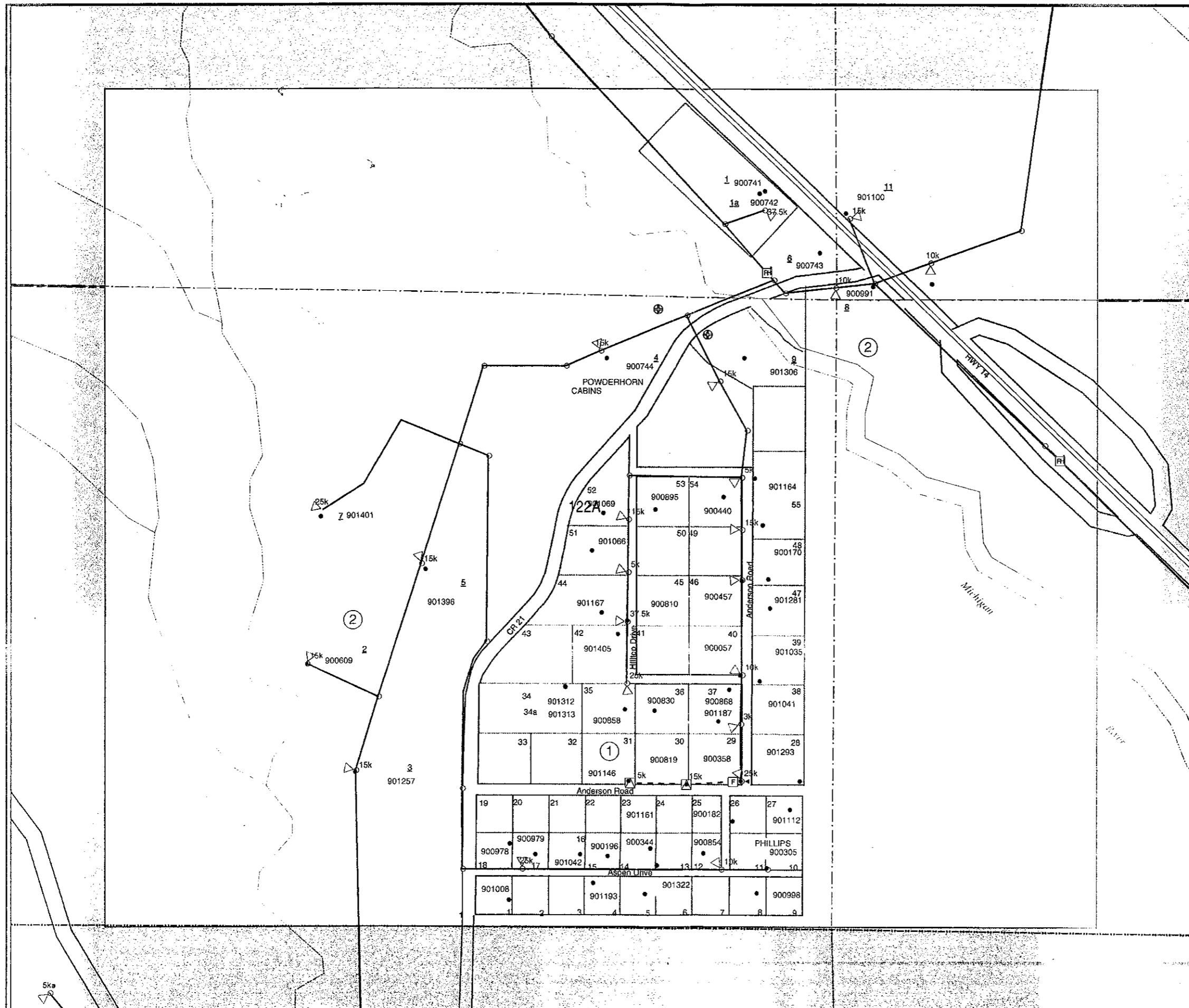
- 12967
- Meter
- Pole
- ◀ Riser
- ⊞ Capacitor
- ⊞ Fuse
- ⊞ RE Recloser-Elec
- ⊞ RH Recloser-Hyd
- ⊞ SE Sectlzf-Elec
- ⊞ SH Sectlzf-Hyd
- ⊞ Switch
- ⊞ GO GOAB Switch
- ▽ 1ph OH Transformer
- △ 1phs UG Transformer
- ▼ 3phs OH Transformer
- ▲ 2-3phs UG Transformer
- Vault
- ▤ 1 Phs Sector
- ▥ 3 Phs Sector
- ⊞ SG SwitchGear
- ⊞ VR Voltage Regulator
- () Normal Open
- ⊕ Fault Indicator
- Unknown Phase
- - - A phs UG Line
- - - B phs UG Line
- - - C phs UG Line
- - - V phs UG Line
- - - 3 phs UG Line
- A phs OH Line
- B phs OH Line
- C phs OH Line
- V phs OH Line
- 3 phsE OH Line
- Transmission Line

VICINITY MAP

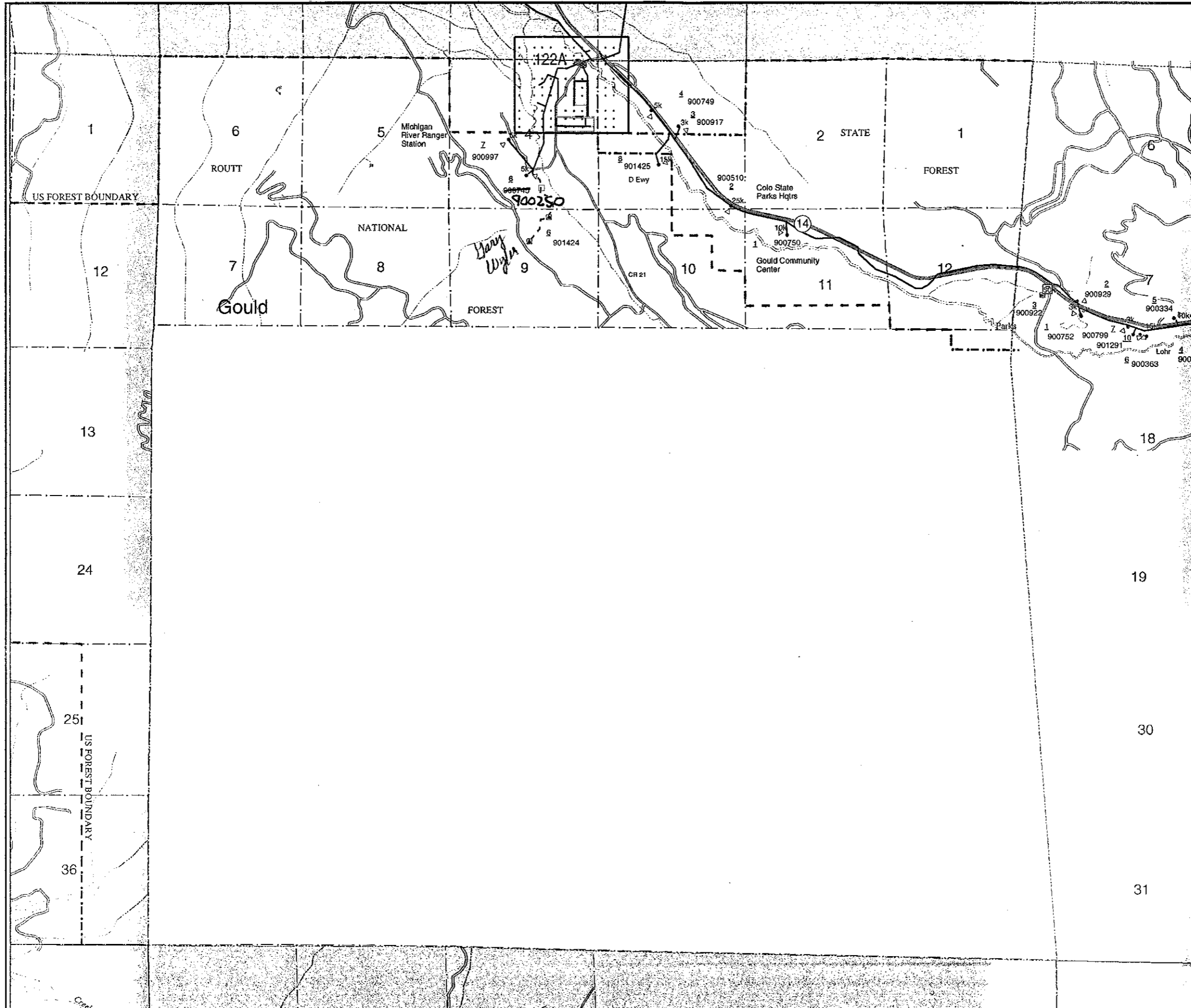


Gould, Whispering Pines

STATE & COUNTY	TOWN/RANGE/SEC	DWG NUMBER
COLORADO JACKSON	T6-7N R77W S 33-34, S 4	122A



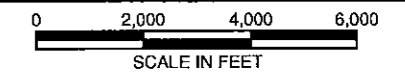
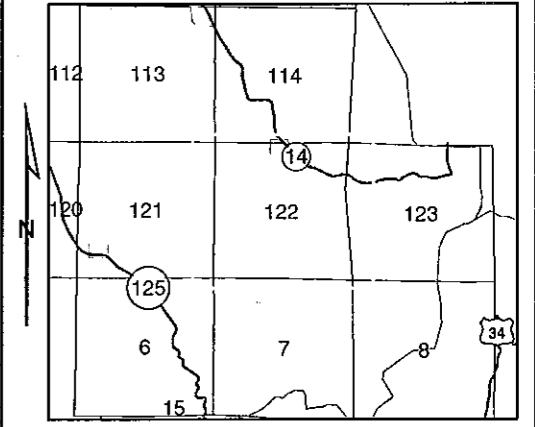
DRAFTED BY: NLF	DIR DIST: 3
DATE: 03-04	APP'D BY: LAS
# OF METERS: 38	CO MAP:



Legend

- 12967
- Meter
- Pole
- ▲ Riser
- ⊞ Capacitor
- ⊞ Fuse
- ⊞ RE Recloser-Elec
- ⊞ RH Recloser-Hyd
- ⊞ SE Sectlizr-Elec
- ⊞ SH Sectlizr-Hyd
- ⊞ Switch
- ⊞ GO GOAB Switch
- ▽ 1ph OH Transformer
- △ 1phs UG Transformer
- ▼ 3phs OH Transformer
- ▲ 2-3phs UG Transformer
- Vault
- ▣ 1 Phs Sector
- ▤ 3 Phs Sector
- ⊞ SG SwitchGear
- ⊞ VR Voltage Regulator
- () Normal Open
- ⊕ Fault Indicator
- Unknown Phase
- - - A phs UG Line
- - - B phs UG Line
- - - C phs UG Line
- - - V phs UG Line
- - - 3 phs UG Line
- A phs OH Line
- B phs OH Line
- C phs OH Line
- V phs OH Line
- 3 phsE OH Line
- Transmission Line

VICINITY MAP



TOWNSHIP MAP

STATE & COUNTY	TOWNSHIP/RANGE	DWG NUMBER
COLORADO JACKSON	T6N R77W	122

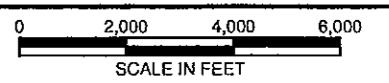
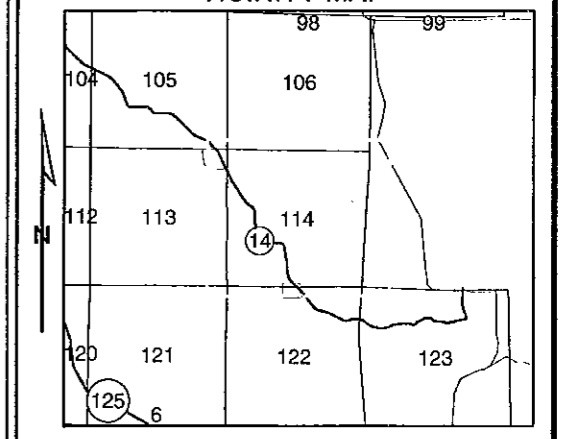


DRAFTED BY: NLF DIR DIST: 3
 DATE: 03-04 APP'D BY: LAS
 # OF METERS: 28 21 CO MAP:

Legend

- | | |
|-------------------------|---------------------|
| ● Meter | — Unknown Phase |
| ○ Pole | - - - A phs UG Line |
| ◀ Riser | - - - B phs UG Line |
| ⊞ Capacitor | - - - C phs UG Line |
| ⊞ Fuse | - - - V phs UG Line |
| ⊞ RE Recloser-Elec | - - - 3 phs UG Line |
| ⊞ RH Recloser-Hyd | — A phs OH Line |
| ⊞ SE Sectizr-Elec | — B phs OH Line |
| ⊞ SH Sectizr-Hyd | — C phs OH Line |
| ⊞ Switch | — V phs OH Line |
| ⊞ GO GOAB Switch | — 3 phsE OH Line |
| ▽ 1ph OH Transformer | — Transmission Line |
| ⊞ 1phs UG Transformer | |
| ▼ 3phs OH Transformer | |
| ▲ 2-3phs UG Transformer | |
| □ Vault | |
| ⊞ 1 Phs Sector | |
| ⊞ 3 Phs Sector | |
| ⊞ SG SwitchGear | |
| ⊞ VR Voltage Regulator | |
| () Normal Open | |
| ⊞ Fault Indicator | |

VICINITY MAP



TOWNSHIP MAP

STATE & COUNTY	TOWNSHIP	DWG NUMBER
COLORADO JACKSON	T7N R77W	114

