

## STATE OF COLORADO - PRESCRIBED FIRE BURN PLAN

<b>Agency/Landowner Name:</b>			
<b>Sub-Unit Name:</b>			
<b>Prescribed Fire Project Name:</b>			
<b>County:</b>		<b>DFPC District/Region:</b>	
<b>Final Complexity:</b>		<b>Plan Expiration Date:</b>	

**Prepared By:**

<b>Printed Name/Title:</b>		<b>Rx Qualification:</b>	
<b>Signature:</b>		<b>Date:</b>	

**Technical Review By:**

<b>Printed Name/Title:</b>		<b>Rx Qualification:</b>	
<b>Signature:</b>		<b>Date:</b>	

**Jurisdictional Fire Authority/County Verification of Consultation and Concurrence:** *The following attest that the jurisdictional fire authority and/or the County Sheriff (or designee) was consulted in the preparation of this plan.*

**Fire Authority Review:**

<b>Printed Name:</b>		<b>Title/Rank:</b>	
<b>Signature:</b>		<b>Date:</b>	

**County Sheriff Review:**

<b>Printed Name:</b>		<b>Title/Rank:</b>	
<b>Signature:</b>		<b>Date:</b>	

*This Prescribed Fire Plan is valid for five years from the final Agency Administrator approval date: No one has the authority to burn without an approved prescribed fire plan, associated permits, delegated burn boss authority or in a manner not in compliance with the approved plan and State of Colorado prescribed fire policy.*

**Agency Approval:**

<b>Printed Name:</b>		<b>Title/Rank:</b>	
<b>Signature:</b>		<b>Date:</b>	

**FIRE SAFE CERTIFICATION**

*This certifies that all fire in the project area is out and any further patrol or mop-up activities are no longer required. Projects with multiple units or burn dates may require multiple fire safe certifications by the delegated Burn Boss. Additional copies of this form should be made to record all certifications in the file.*

<b>Printed Name:</b>		<b>Title/Rank:</b>	
<b>Signature:</b>		<b>Date:</b>	

<b>PRESCRIBED FIRE BRIEFING</b>	<b>PROJECT NAME:</b>		<b>PREPARED BY:</b>	
	<b>BURN UNIT(S):</b>		<b>DATE:</b>	

**DESCRIPTION OF LOCATION INCLUDING GEOGRAPHIC FEATURES:**

**DESCRIPTION OF FUELS INCLUDING ADJACENT FUEL TYPES:**

<b>LEGAL LOCATION:</b>	<b>LATITUDE:</b>	<b>LONGITUDE:</b>	<b>VOR INFORMATION:</b>

**UNIT DESCRIPTIONS**

<b>UNIT NAME / NUMBER</b>	<b>LATITUDE &amp; LONGITUDE (CENTER OF UNIT)</b>	<b>ASPECT(S)</b>	<b>SLOPE RANGE (%)</b>	<b>ELEVATION (TOP)</b>	<b>ELEVATION (BOTTOM)</b>	<b>MAJOR FUEL MODELS</b>	<b>SIZE IN ACRES</b>

<b>PRESCRIBED FIRE PROJECT OBJECTIVES</b>	<b>PROJECT NAME:</b>		<b>PREPARED BY:</b>	
	<b>BURN UNIT(S):</b>		<b>DATE:</b>	

<b>IMPLEMENTATION SEASON (INCLUSIVE DATE RANGE/SEASON):</b>	
---	--

<b>RESOURCE MANAGEMENT OBJECTIVES:</b>

<b>SPECIFIC MANAGEMENT OR ADMINISTRATIVE CONSTRAINTS:</b>

<b>INTER-RESOURCE COORDINATION: (Check appropriate resource functions)</b>					
Timber		Cultural		Fisheries	
Wildlife		Soils		Air Quality	
Range		Hydrology		Special Uses	
Recreation		Minerals		Other	

<b>SUPPORTING DOCUMENT CHECKLIST: (Check if required &amp; show date of completion or approval)</b>		
<b>Planning Documents Needed For Project Implementation</b>	<b>Required</b>	<b>Completed</b>
Appropriate Planning Analysis & Documentation		
Agreement(s)		
Annual/Project Work Plan(s)		
Activity Plan(s)		
Clearances (T&E, Arch., Claims, Access, etc.)		
Other (Specify)		

<b>TOTAL FUNDS AVAILABLE</b>		<b>EST. COST PER ACRE</b>	
<b>EST. TOTAL PROJECT COST</b>		<b>CHARGE OR ACCT. CODE</b>	

<b>PRESCRIBED FIRE PRE-BURN CONSIDERATIONS</b>	<b>PROJECT NAME:</b>		<b>PREPARED BY:</b>	
	<b>BURN UNIT(S):</b>		<b>DATE:</b>	

<b>IMPLEMENTATION SEASON (INCLUSIVE DATES)</b>	
--	--

<b>MODIFICATIONS NEEDED TO TARGET FUELS:</b>
--

--

<b>CONTROL FEATURE CONSTRUCTION OR PRE-TREATMENT NEEDS:</b>
---

--

<b>PUBLIC AND COOPERATOR MEETINGS/CONSULTATIONS (ASSIGN TASKS):</b>
---

--

<b>AGENCY AND PUBLIC NOTIFICATIONS (ASSIGN TASKS):</b>
--

--

<b>WILDLAND FIRE PRESCRIPTION</b>	<b>PROJECT NAME:</b>		<b>PREPARED BY:</b>	
	<b>BURN UNIT(S):</b>		<b>DATE:</b>	

**WILDLAND FIRE PRESCRIPTION**

**DESCRIPTION OF PRESCRIBED FIRE BEHAVIOR CHARACTERISTICS NEEDED TO MEET THE RESOURCE MANAGEMENT OBJECTIVES STATED IN THE OBJECTIVES.**

**NOTE: Utilize characteristics which are observable and measurable.**

**ENVIRONMENTAL PARAMETERS NEEDED TO PRODUCE THE DESIRED FIRE BEHAVIOR**

**NOTE: List separate parameters for different seasons such as spring, summer fall and winter if burn is a multi-season project.**

<b>ENVIRONMENTAL PARAMETER</b>	<b>UPPER LIMIT (MAXIMIZES FIRE BEHAVIOR OUTPUTS)</b>	<b>LOWER LIMIT (MINIMIZES FIRE BEHAVIOR OUTPUTS)</b>

<b>PRESCRIBED FIRE ORGANIZATION</b>	<b>PROJECT NAME:</b>		<b>PREPARED BY:</b>	
	<b>BURN UNIT(S):</b>		<b>DATE:</b>	

<b>POSITION (LIST ONLY THOSE NEEDED):</b>	<b>NAME(S): <i>"Insert on day of</i></b>
PRESCRIBED FIRE MANAGER - LEVEL 1 - (RXM1)	
PRESCRIBED FIRE MANAGER - LEVEL 2 - (RXM2)	
BURN BOSS - LEVEL 1 - (RXB1)	
BURN BOSS - LEVEL 2 - (RXB2)	
BURN BOSS - LEVEL 3 - (RXB3)	
FIRING BOSS	
HOLDING BOSS – (USE ICS QUALS)	
STRATEGIC OPERATIONS PLANNER – (SOPL)	
LONG TERM FIRE ANALYST - (LTAN)	
FIRE BEHAVIOR ANALYST. - (FBAN)	
FIRE EFFECTS MONITOR - (FEMO)	
SAFETY OFFICER - (SOF1, SOF2, SOF3)	
FIRE INFORMATION OFFICER - (IOF1, IOF2, IOF3)	
AIR QUALITY SPECIALIST – (AQSP)	
HOLDING FORCE CREW - (USE ICS QUALS)	
IGNITION CREW - (USE ICS QUALS)	
HELITORCH MANAGER - (HTMG)	
HELITORCH MIXMASTER - (HTMM)	
HELITORCH PARKING TENDER - (HTPT)	
SPHERE DISPENSER OPERATOR - (PLDO)	
HELIBASE & MIXING CREW - (USE ICS QUALS)	
TERRA-TORCH OPERATOR - (TTOP)	
LAW ENFORCEMENT - (AGENCY SPECIFIC)	
OTHER (Specify)	

<b>PRESCRIBED FIRE EQUIPMENT &amp; SUPPLIES</b>	<b>PROJECT NAME:</b>		<b>PREPARED BY:</b>	
	<b>BURN UNIT(S):</b>		<b>DATE:</b>	

<b>EQUIPMENT AND / OR SUPPLY NEEDED</b>	<b>QUANTITY REQUIRED</b>	<b>SUPPLIED BY : (LIST AGENCY/SOURCE)</b>			

<b>PRESCRIBED FIRE IGNITION ASSIGNMENT PLAN</b>	<b>PROJECT NAME:</b>		<b>PREPARED BY:</b>	
	<b>BURN UNIT(S):</b>		<b>DATE:</b>	

<b>COMPLEXITY</b>		<b>FIRING BOSS NAME:</b>	
-------------------	--	--------------------------	--

<b>PERSONNEL ASSIGNED &amp; OPERATIONAL POSITION</b>		<b>EQUIPMENT ASSIGNED</b>

**NARRATIVE OF IGNITION ASSIGNMENT**

**SPECIAL INSTRUCTIONS**



<b>PRESCRIBED FIRE HOLDING ASSIGNMENT PLAN</b>	<b>PROJECT NAME:</b>		<b>PREPARED BY:</b>	
	<b>BURN UNIT(S):</b>		<b>DATE:</b>	

<b>COMPLEXITY</b>		<b>HOLDING SPEC. NAME:</b>	
-------------------	--	----------------------------	--

<b>PERSONNEL ASSIGNED &amp; OPERATIONAL POSITION</b>		<b>EQUIPMENT ASSIGNED</b>

**NARRATIVE OF HOLDING ASSIGNMENT**

- Holding forces are assigned to the project and must be on-site or on ordered standby.
- Assigned resources will not be assigned other duties outside of the scope of this project.
- All resources are funded by the project while assigned and under the direct control of the prescribed fire.
- Include all Mop-Up and Patrol duties for the first 24 hour period following ignition.

**SPECIAL INSTRUCTIONS**

<b>PRESCRIBED FIRE MOP-UP &amp; PATROL ASSIGNMENT PLAN</b>	<b>PROJECT NAME:</b>		<b>PREPARED BY:</b>	
	<b>BURN UNIT(S):</b>		<b>DATE:</b>	

<b>COMPLEXITY</b>		<b>HOLDING SPEC. NAME:</b>	
-------------------	--	----------------------------	--

<b>PERSONNEL ASSIGNED &amp; OPERATIONAL POSITION</b>		<b>EQUIPMENT ASSIGNED</b>

<p><b>NARRATIVE OF MOP-UP &amp; PATROL ASSIGNMENT</b></p> <ul style="list-style-type: none"> <li>• Holding forces are assigned to the project and must be on-site or on ordered standby.</li> <li>• Assigned resources will not be assigned other duties outside of the scope of this project.</li> <li>• All resources are funded by the project while assigned and under the direct control of the prescribed fire.</li> <li>• Include all Mop-Up and Patrol duties for the period 1-5 days post ignition (if applicable).</li> </ul>
---

--

<b>SPECIAL INSTRUCTIONS</b>
-----------------------------

--

<b>PRESCRIBED FIRE EXTENDED PATROL ASSIGNMENT PLAN</b>	<b>PROJECT NAME:</b>		<b>PREPARED BY:</b>	
	<b>BURN UNIT(S):</b>		<b>DATE:</b>	

<b>COMPLEXITY</b>		<b>HOLDING SPEC. NAME:</b>	
-------------------	--	----------------------------	--

<b>PERSONNEL ASSIGNED &amp; OPERATIONAL POSITION</b>		<b>EQUIPMENT ASSIGNED</b>

**NARRATIVE OF MOP-UP & PATROL ASSIGNMENT**

- Holding forces are assigned to the project and must be on-site or on ordered standby.
- Assigned resources will not be assigned other duties outside of the scope of this project.
- All resources are funded by the project while assigned and under the direct control of the prescribed fire.
- Include all Mop-Up and Patrol duties for the period greater than 5 days post ignition (if applicable).

**SPECIAL INSTRUCTIONS: REFER TO EXTENDED WEATHER NARRATIVE (5-7 DAYS)**

**SPECIAL INSTRUCTIONS: REFER TO EXTENDED WEATHER NARRATIVE (5-7 DAYS)**

<b>PRESCRIBED FIRE SMOKE MGMT. ASSIGNMENT PLAN</b>	<b>PROJECT NAME:</b>		<b>PREPARED BY:</b>	
	<b>BURN UNIT(S):</b>		<b>DATE:</b>	

<b>PERMIT NUMBER:</b>		<b>ISSUING AGENCY(S):</b>	
<b>VALID DATE</b>		<b>AIR QUAL. SPEC.</b>	

<b>PERSONNEL ASSIGNED &amp; POSITION</b>		<b>EQUIPMENT ASSIGNED</b>

**NARRATIVE OF GENERAL SMOKE MANAGEMENT ASSIGNMENT**

<b>POTENTIAL SMOKE SENSITIVE AREAS</b>	<b>DISTANCE FROM BURN (MILES)</b>	<b>DIRECTION FROM BURN</b>

**SMOKE CONTINGENCY ACTIONS**

**SPECIAL INSTRUCTIONS**

<b>PRESCRIBED FIRE INFORMATION ASSIGNMENT PLAN</b>	<b>PROJECT NAME:</b>		<b>PREPARED BY:</b>	
	<b>BURN UNIT(S):</b>		<b>DATE:</b>	

<b>COMPLEXITY</b>		<b>INFO OFCR NAME:</b>	
-------------------	--	------------------------	--

<b>PERSONNEL ASSIGNED &amp; POSITION</b>		<b>EQUIPMENT ASSIGNED</b>

<b>NARRATIVE OF INFORMATION ASSIGNMENT</b>
--

<b>SPECIAL INSTRUCTIONS</b>
-----------------------------



**CONTINGENCY PLAN – PART 2**

**TACTICAL OPTIONS FOR CONTINGENCY FORCES**

Note: The following tactical considerations are to be utilized by on-site holding and optional contingency forces in the event a prescribed fire meets the identified contingency triggers on page 1. The various tactical options should be described in detail and identified as management action points (MAPs). Management Action Points should be identified on a supplemental map. These MAP descriptions should identify the situation, management intent, course(s) of action, recommended resources/equipment, timeframe to complete, responsibilities and date and time initiated. Use optional MAP table format located in policy guide appendices if applicable. These tactical options are a guide and may also be considered by the Incident Commander in formulating post-escape tactics in the event the fire is declared a wildfire.

**PERIMETER CONTROL - DIRECT ATTACK OPTION (INCL. MGMT ACTION POINTS/LIMITS)**

--

**PERIMETER CONTROL – DIRECT ATTACK FALL-BACK OPTION (INCL. MGMT ACTION POINTS/LIMITS)**

--

**AREA CONTAINMENT - INDIRECT ATTACK OPTION (INCL. MGMT ACTION POINTS/LIMITS)**

--

**AREA CONTAINMENT - INDIRECT ATTACK FALL-BACK OPTION (INCL. MGMT ACTION POINTS/LIMITS)**

--

<b>PRESCRIBED FIRE CONTINGENCY M.A.P. DESCRIPTOR</b>	<b>CONTINUATION OF DFPC-RX-204G CONTINGENCY ASSIGNMENT PLAN</b>	<b>PROJECT NAME:</b>		<b>PAGE:</b>	
		<b>M.A.P. NUMBER:</b>		<b>OTHER:</b>	

Condition:

Management Intent:

Recommended Action(s):

Recommended Resource(s):

Time Needed To Implement:

Consequence of No Action (Optional):

Responsibility To Implement:

Date & Time Of Action(s) Implemented:



<b>PRESCRIBED FIRE PROJECT WILDFIRE DECLARATION (ESCAPED FIRE PLAN)</b>		<b>WILDFIRE DECLARATION OFFICIAL:</b>	
		<b>DESIGNATED INCIDENT COMMANDER:</b>	
<b>PROJECT NAME:</b>		<b>DESIGNATED OPERATIONS CHIEF:</b>	
<b>BURN UNIT(S):</b>		<b>PRIMARY DISPATCH CENTER PHONE #:</b>	
<b>AGENCY:</b>		<b>DFPC REGIONAL BATTALION CHIEF NAME:</b>	
<b>COUNTY:</b>		<b>DFPC REGIONAL BC PHONE #:</b>	

A prescribed fire or a portion/segment of a prescribed fire must be declared a wildfire by the official identified above when one or more of the following criteria are met:

- Prescription parameters are exceeded and holding and contingency actions cannot secure the fire by the end of the **next burning period**; or,
- The fire has spread outside the unit or project area or is likely to do so and the associated contingency actions have failed or are likely to fail and the fire cannot be contained by the end of the **next burning period**.
- A prescribed fire can be declared a wildfire for reasons other than an escape if events cannot be mitigated as determined by the Burn Boss and Agency Administrator.

**INITIAL ESCAPED PRESCRIBED FIRE ACTION PLAN:** This plan is developed to consider the initial action response from fire and resource management personnel in the event the fire can no longer be managed as a prescribed burn. The events or conditions which lead the prescribed fire's command staff to make this determination in addition to an obvious escape outside of the project area are called "Trigger Points" and must be identified in the Contingency Plan and associated Management Action Points. In the event a prescribed fire becomes a wildfire, the following procedures will be initiated:

1. The Burn Boss will notify the appropriate official to make a wildfire declaration.
2. The transition from Prescribed Fire to Wildfire will occur with all personnel on-site notified by radio that command has been transferred to the Incident Commander and associated overhead will be announced.
3. The Agency Administrator/Wildfire Declaration Official will notify the DFPC Division Director or designee via the DFPC Regional Battalion Chief or designee.
4. The appropriate County Sheriff and jurisdictional fire agency(s) will be notified as well as the appropriate dispatch center and/or emergency operations center.

The following table contains a list of **recommended** initial resources that **may** be ordered by the Incident Commander via the appropriate Dispatch Center. These resource types and quantities are in-part derived from fire behavior calculations, risk assessments and holding/contingency force development processes, etc. **It should be stressed to all personnel associated with the project that this list is only a guide and does not imply that these resources are required to implement the prescribed fire project. In many cases, professional judgment and experience may be utilized as well.** This resource list is developed to aid the Incident Commander in providing the appropriate Agency Administrator in charge with a timely suppression response.

<b>RECOMMENDED INITIAL RESOURCE ORDER</b>			
<b>SUGGESTED RESOURCE:</b>	<b>DESIRED RESPONSE TIME TO INCIDENT (HOURS):</b>	<b>SUGGESTED RESOURCE:</b>	<b>DESIRED RESPONSE TIME TO INCIDENT (HOURS):</b>

<b>PRESCRIBED FIRE COMMUNICATION PLAN</b>	<b>PROJECT NAME:</b>		<b>PREPARED BY:</b>	
	<b>BURN UNIT(S):</b>		<b>DATE:</b>	

<b>PROJECT RADIO UTILIZATION PLAN</b>
---------------------------------------

<b>RX FREQUENCY</b>	<b>RX TONE</b>	<b>TX FREQUENCY</b>	<b>TX TONE</b>	<b>ASSIGNMENT</b>

<b>PROJECT CELLULAR / SATELLITE PHONES</b>
--

<b>PERSONNEL NAME / POSITION</b>	<b>PHONE NUMBER</b>

<b>SPECIAL INSTRUCTIONS</b>
-----------------------------

<b>PRESCRIBED FIRE EMERGENCY MEDICAL PLAN</b>	<b>PROJECT NAME:</b>		<b>PREPARED BY:</b>	
	<b>BURN UNIT(S):</b>		<b>DATE:</b>	

**MEDICAL AID STATIONS, CLINICS, TRAUMA CENTERS OR HOSPITALS**

<b>NAME OF CARE FACILITY</b>	<b>PHYSICAL ADDRESS</b>	<b>TRAVEL TIME (MINUTES) AIR / GND.</b>		<b>PHONE NUMBER</b>	<b>BURN CENTER (Check Y or No)</b>	<b>HELIPAD (Check Y or N)</b>

**AIR AND GROUND PATIENT TRANSPORTATION**

<b>NAME OF TRANSPORT AGENT</b>	<b>PHYSICAL ADDRESS</b>	<b>PHONE NUMBER</b>	<b>PARAMEDICS (Check Y or N)</b>

**MEDICAL EMERGENCY PROCEDURES**

All major medical incidents will be reported through the appropriate dispatch center command channels - declare "Medical Emergency, please clear the air". Provide dispatch with the type(s) of injury, # of persons injured, and basic vital signs. Utilize on-site EMTs and/or first aid treatment to stabilize and comfort the patient(s). Medevac heli-spot(s) should be previously identified and will be a minimum of 100' X 100' in size and notify dispatch of obvious flight hazards (e.g. power lines). For minor injuries, transport the injured to the nearest medical facilities via project vehicles. Contact dispatch for logistical support. Relay to dispatch "Non-emergency" if appropriate. Note: Other helicopters may land at hospital helipads; however these hospital helipads often need a minimum of 10 minutes' notice to clear the pad. Utilize dispatch for initial order of air- evac transportation.

**DIRECTIONS FROM NEAREST MEDICAL FACILITY TO PROJECT VIA GROUND**

**LATITUDE / LONGITUDE AND GROUND CONTACT FREQUENCY OF PROJECT MEDIVAC HELISPOT**

<b>LATITUDE:</b>		<b>LONGITUDE:</b>		<b>FREQUENCY:</b>	
------------------	--	-------------------	--	-------------------	--

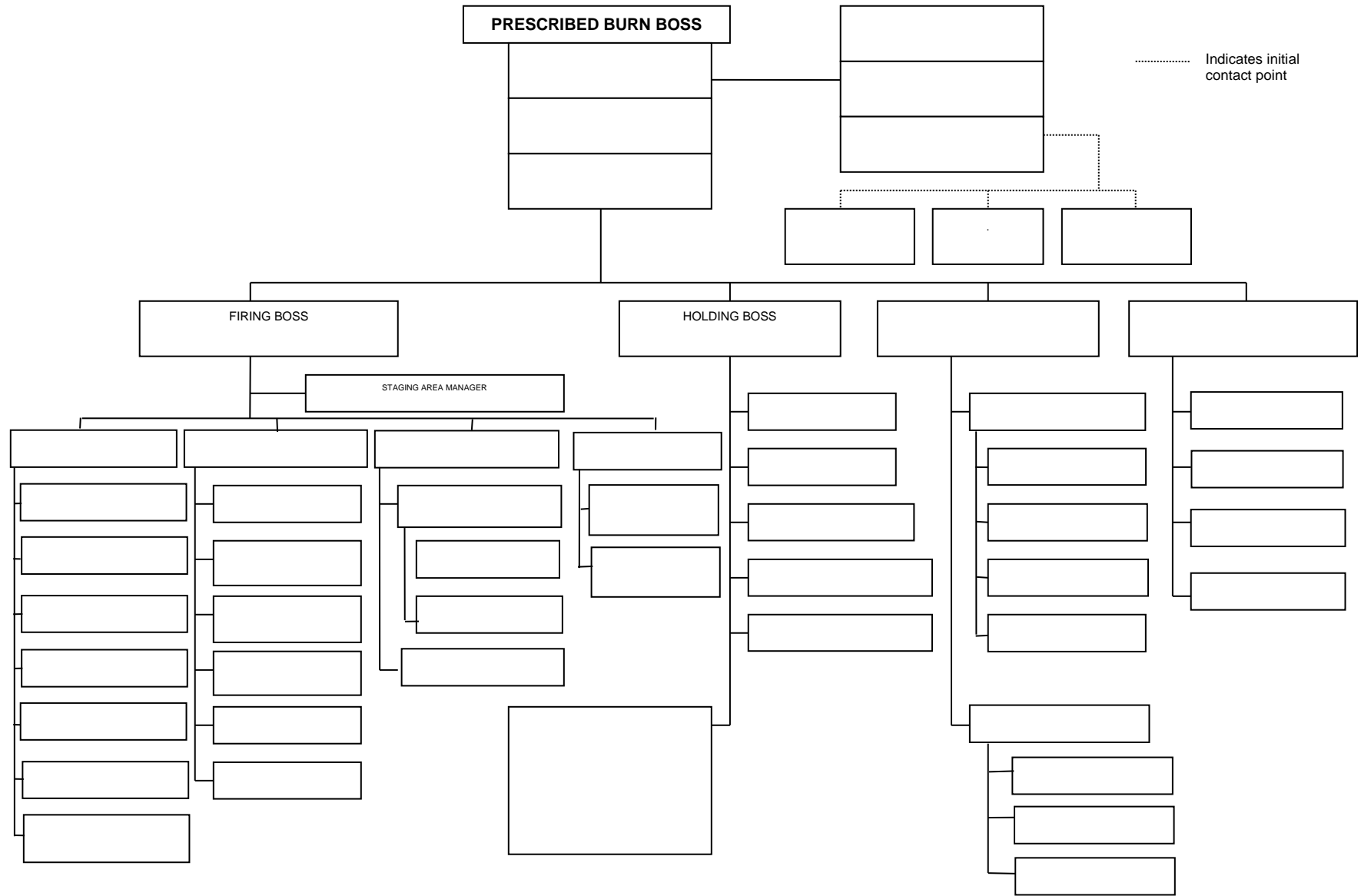
PRESCRIBED PROJECT NAME:

Operational Period (Date/Time)

From:

To:

PRESCRIBED FIRE ORGANIZATION  
CHART DFPC-Rx-207



<b>PRESCRIBED FIRE SAFETY MESSAGE</b>	<b>PROJECT NAME:</b>		<b>PREPARED BY:</b>	
	<b>BURN UNIT(S):</b>		<b>DATE:</b>	

**GENERAL SAFETY MESSAGE**

**SPECIFIC SAFETY DISCUSSION INCLUDING UNIQUE HAZARDS AND CONCERNS**



## AGENCY ADMINISTRATOR IGNITION AUTHORIZATION

Instructions: The Agency Administrator Ignition Authorization must be completed before a prescribed fire can be implemented. If ignition of the prescribed fire is not initiated prior to expiration date determined by the agency administrator, a new authorization will be required.

Prior to signature the agency administrator should discuss the following key items with the DFPC District/Battalion Chief or Burn Boss. Attach any additional instructions or discussion documentation (optional) to this document.

AGENCY ADMINISTRATOR NAME:			
AGENCY:	SUBUNIT:	PROJECT NAME:	
A. <b>Has anything changed since the Prescribed Fire Plan was approved or re-validated?</b> <i>Such as drought or other climatic indicators of increased risk, insect activity, new development, smoke requirements or complexity analysis rating.</i>			
B. <b>Have compliance requirements and pre-burn considerations been completed?</b> <i>Such as preparation work, mitigation requirements, cultural, threatened and endangered species, smoke permits, fire control permits, service/funding agreements, etc.?</i>			
C. <b>Can all of the elements and conditions specified in the Prescribed Fire Plan be met?</b> <i>Such as weather, scheduling, smoke management conditions, suitable prescription window, correct season, staffing, organization, safety considerations, etc.?</i>			
D. <b>Are processes in place to ensure all internal and external notification tasks are assigned and will be completed in a timely manner?</b> <i>This includes potential media briefings and/or releases and social media postings (if capabilities exist within the agency)?</i>			
E. <b>Have key agency staffs been fully briefed about the implementation of this prescribed fire project?</b> <i>Include any other agency that may be providing staffing or equipment for the project.</i>			
F. <b>Are there circumstances that could affect the successful implementation of the plan?</b> <i>Such as preparedness level restrictions within the dispatch zone, state, region or nation; resource availability, burning restrictions, other prescribed fire or wildfire activity and any other all-hazard events.</i>			
G. <b>Have you communicated your expectations to the Burn Boss and District/Battalion Chiefs of the Division regarding if and when you are to be notified that contingency actions are being taken?</b>			
H. <b>Have you communicated your expectations to the Burn Boss and District/Battalion Chiefs of the Division regarding decisions to declare the prescribed fire a wildfire?</b> <i>Are those same expectations known to the local jurisdictional fire authority and the County Sheriff?</i>			

Implementation Recommended By: \_\_\_\_\_ Date: \_\_\_\_\_  
 Burn Boss or District/Battalion Chief (Signature)

I am authorizing the ignition of this prescribed fire between the dates of: \_\_\_\_\_ and \_\_\_\_\_. It is my expectation that the project will be implemented within this time frame, and that you will brief me on the current situation and any potential circumstances that may warrant any negotiations necessary to update this authorization.

Additional Instructions or discussion documentation attached (optional)? Yes \_\_\_\_\_ No \_\_\_\_\_

Ignition Authorized By: \_\_\_\_\_ Date: \_\_\_\_\_  
 Agency Administrator (Signature) Title

<b>PRESCRIBED FIRE GO - NO - GO CHECKLIST</b>	<b>PROJECT NAME:</b>							
	<b>BURN UNIT(S):</b>							
<b>PRELIMINARY QUESTIONS (Check YES or NO in right-hand blocks)</b>							<b>YES</b>	<b>NO</b>
A. Have conditions in or adjacent to the ignition unit(s) changed, (for example: drought conditions or fuel loadings), which were not considered in the development of the prescribed fire prescription? If <b>NO</b> proceed with the GO/NO-GO Checklist below, if <b>YES</b> go to item B.								
B. Has the prescribed fire plan been reviewed and an amendment been approved; or has it been determined that no amendment is necessary? If <b>YES</b> , proceed with checklist below. If <b>NO</b> , <b>STOP: Implementation is not allowed. An amendment is required.</b>								
<b>GO/NO-GO CHECKLIST (Check YES or NO in right-hand blocks)</b>							<b>YES</b>	<b>NO</b>
Have ALL permits and clearances been obtained?								
Have ALL the required notifications been made?								
Have ALL the pre-burn considerations and preparation work identified in the prescribed fire plan been completed or addressed and verified?								
Have ALL the required current and projected fire weather forecast(s) been obtained and are they favorable for operations?								
Are ALL the prescription parameters met?								
Are ALL smoke management specifications met?								
Are ALL planned operations personnel and equipment on-site, available and fully operational?								
Has the availability of contingency resources applicable to today's implementation been verified and available?								
Have ALL personnel been briefed on the project objectives, their assignments, safety hazards, escape routes and safety zones?								
If all the questions were answered " <b>YES</b> " proceed with the test fire. Document the current conditions, location and results. If any of the questions were answered " <b>NO</b> ", <b>DO NOT</b> proceed with the test fire: Implementation is <b>NOT ALLOWED</b> .								
After evaluating the test fire, in your judgment can the prescribed fire be carried out according to the prescribed fire plan and will it meet the planned objective? <b>CIRCLE: YES or NO</b>								
			Burn Boss		Date:	Time (24Hr):		
			Firing Boss		Date:	Time (24Hr):		
			Holding Specialist		Date:	Time (24Hr):		
			Helitorch/Helibase Mgr.		Date:	Time (24Hr):		
			Safety Officer		Date:	Time (24Hr):		
					Date:	Time (24Hr):		
					Date:	Time (24Hr):		
<b>TEST FIRE INITIATED @ TIME:</b>				<b>HRS.</b>	<b>FAVORABLE RESULTS:</b>	<b>YES</b>		<b>NO</b>
<b>SPECIFIC TEST FIRE ACTIVITIES (Complete Test Fire Documentation In Project File):</b>								
DFPC-Rx-302 (Go,No-Go) 03/2014								



## PRESCRIBED FIRE DELEGATION OF AUTHORITY

<b>TO ASSIGNED BURN BOSS:</b>	
-------------------------------	--

<b>AGENCY:</b>		<b>SUBUNIT:</b>		<b>PROJECT:</b>	
----------------	--	-----------------	--	-----------------	--

I hereby delegate full authority for the ignition and management of the prescribed fire project for the administrative sub-unit, as shown above.

I require that all prescribed fire actions be executed in full accordance with the Prescribed Fire Plan. A copy of the document is included in the Prescribed Fire Project Package that will be presented to you.

The principal objectives I expect to have accomplished for this prescribed fire project are:

- Safety of personnel and the public is of greatest importance and should be given highest priority in planning and executing management strategies.
- Cost efficiency is a concern. Use strategies which may yield least total cost, while achieving the management objectives and administrative constraints of the Prescribed Fire Plan in a safe and efficient manner.
- Use appropriate tactics to minimize impacts to resources.
- The ignition and management of the project will be in accordance with management direction set forth in all appropriate agency policies and guidelines.
- Resource concerns should be coordinated with the assigned Resource Specialist for this project.

Additional objectives are:

<b>Resource Specialist Assigned:</b>	
--------------------------------------	--

<b>Agency Administrator:</b>		<b>Date:</b>	
------------------------------	--	--------------	--





## PRESCRIBED FIRE RETURN OF DELEGATION

TO AGENCY ADMINISTRATOR:	
--------------------------	--

AGENCY:		SUBUNIT:		PROJECT NAME:	
---------	--	----------	--	---------------	--

I hereby return all delegated authority for management of the prescribed fire project for the administrative sub-unit, as shown above.

All prescribed fire actions have been executed in full accordance with the Prescribed Fire Plan.

All required Burn Boss documentation has been completed and placed in the Project File and returned to you.

Transfer of command is effective on  at  hrs.  
Month, Day, Year Military Time

Burn Boss Printed Name & Signature:		Date:	
-------------------------------------	--	-------	--

Agency Administrator Signature:		Date:	
---------------------------------	--	-------	--

## PRESCRIBED FIRE BRIEFING CHECKLIST

**Note: This outline is designed to aid the Burn Boss in formatting his/her briefing to prescribed fire personnel prior to initiating a prescribed fire project.**

- Burn Organization**
- Organization Chart / Personnel Assignments
- Equipment Assignments
- Other Resources
- Burn Objectives**
- Description of Burn Area**
- Review Map of Burn / Topographical Features / Acreage
- Values at Risk
- Problem Areas (Both inside and outside of burn units and Project Area)
- Roads & Access
- Water Sources / Helispots / Staging Areas / etc.
- Natural and man-made barriers
- Expected Weather & Fire Behavior**
- Prescription parameters / Environmental parameters
- Wind direction and speed
- Relative humidity (maximums and minimums)
- Temperature (maximums and minimums)
- Fuel moisture
- Atmospheric stability / Smoke dispersion
- Predicted changes
- Communications**
- Procedures
- Frequencies / channels / cellular phones
- Ignition Crew
- Holding Resources
- Dispatch
- Aircraft
- Cooperators / Others
- Firing Sequence**
- Test burn
- Ignition equipment (type, number, etc.)
- Pattern & Sequence of Firing (Map if applicable)
- Contingency Plan Activation**
- Procedures & Chain of command
- Wildfire Conversion**
- Slop-over vs. Escape (Trigger points)
- Incident Command & Personnel assignments
- Strategy
- Tactics
- Safety**
- Inspect PPE
- LCES
- Hazards (Footing, natural, man-made, smoke [visibility], etc.)
- Potential problems
- Other (Air operations, flammable fuel handling, etc.)
- Review project specific medivac plan
- Review hazard analysis & aviation safety plans if applicable
- Others:**

AGENCY SUBUNIT NOTIFICATION LIST	PROJECT NAME:		PREPARED BY:	
	BURN UNIT(S):		DATE:	

**CONTACTS TO BE MADE BY THE APPROPRIATE AGENCY REPRESENTATIVE PRIOR TO AND/OR DURING PROJECT**

Y TO BE CONTACTED	INDIVIDUAL, ENTITY, BUSINESS OR MEDIA OUTLET	PHONE NUMBER	NOTIFIED DATE / TIME
			/
			/
			/
			/
			/
			/
			/
			/
			/
			/
			/
			/
			/
			/
			/
			/
			/
			/
			/
			/
			/
			/
			/
			/
			/
			/
			/
			/
			/
			/
			/
			/
			/
			/
			/
			/
			/
			/
			/
			/
			/
			/
			/
			/
			/
			/

<b>COOPERATOR AND AGENCY NOTIFICATION</b>	<b>PROJECT NAME:</b>		<b>PREPARED BY:</b>	
	<b>BURN UNIT:</b>		<b>DATE:</b>	

**CONTACTS TO BE MADE BY LOCAL SUBUNIT PERSONNEL OR BURN BOSS PRIOR TO AND OR DURING PROJECT**

<b>APPROPRIATE FIRE AGENCY(S) AND/OR LAW ENFORCEMENT AGENCY(S)</b>	<b>PHONE NUMBER</b>	<b>NOTIFIED DATE / TIME</b>
		/
		/
		/
		/
<b>COOPERATING JURISDICTIONAL AGENCIES</b>	<b>PHONE NUMBER</b>	<b>NOTIFIED DATE / TIME</b>
		/
		/
		/
		/
		/
		/
<b>APPROPRIATE DISPATCH/COMMUNICATION CENTERS</b>	<b>PHONE NUMBER</b>	<b>NOTIFIED DATE / TIME</b>
		/
		/
		/
		/
		/
<b>AIR QUALITY CONTACTS</b>	<b>PHONE NUMBER</b>	<b>NOTIFIED DATE / TIME</b>
		/
		/
<b>OTHER CONTACTS</b>	<b>PHONE NUMBER</b>	<b>NOTIFIED DATE / TIME</b>
		/
		/
		/
		/

<b>BURN BOSS REPORT</b>	<b>PROJECT NAME:</b>		<b>PREPARED BY:</b>	
	<b>BURN UNIT(S):</b>		<b>DATE:</b>	

<b>DATE OF BURN:</b>		<b>TIME OF IGNITION (24 HR):</b>	
----------------------	--	----------------------------------	--

***ON-SITE FUEL MOISTURE CONDITIONS***

MOISTURE CONDITIONS OBTAINED BY; (NFDRS, OVEN, PROBE, STICKS, ETC.) SPECIFY BELOW:					
0-1/4" DEAD	1/4"-1" DEAD	1"-3" DEAD	3"+ DEAD	LIVE WOODY	LIVE HERACEOUS
DUFF % FMC	DUFF DEPTH (IN)	% BARE GROUND	% AREA BURNED	SCORCH HEIGHT (FT)	OTHER

***ACHIEVEMENT OF PRESCRIBED FIRE OBJECTIVES***

<b>SHORT TERM OBJECTIVES:</b>	<b>RESULTS:</b>

***BURN BOSS COMMENTS***

(IE, FIRE BEHAVIOR, PERSONNEL, EQUIPMENT, PERFORMANCE, ETC.)

---



---



---



---



---



---



---



---



---



---

<b>BURN BOSS SIGNATURE:</b>	
<b>DATE:</b>	
DFPC-Rx-308 (Burn Boss Report) 03/2014	

## PRESCRIBED FIRE RECORD

This form is designed to be utilized in the field. During the burn, the Burn Boss or a designated Fire Effects Monitor will document observed fire behavior on an hourly basis throughout the duration of the active burning period. This completed form should be made a part of the permanent prescribed fire record.

<b>PROJECT NAME:</b>		<b>BURN UNIT:</b>		<b>DATE:</b>								
<b>UNIT OF MEAS</b>	<b>TIME PERIOD INCREMENTS (ENTER AT 1 HOUR INTERVALS) SHOWN AS IGNITION TIME + 1 HOUR, 2 HOUR, 3 HOUR, ETC.</b>											
140												
130												
120												
110												
100												
90												
80												
70												
60												
50												
40												
30												
20												
10												
0												
HR	Test	1	2	3	4	5	6	7	8	9	10	11

Relative Humidity = R	Temperature = T	Flame Length = F	Wind Speed = M
10 HR Fuel Moist. = D	Rate of Spread = CH	Wind Dir. = N, E, S, W	Other =

**Direction for use:** Prior to the burn, enter the prescription limits for each prescription parameter along the left hand unit column. Use the appropriate symbols shown above or color code. During the burn, at 1 hour increments, following initial ignition, record the symbol for each parameter in the appropriate time and unit blocks.

<b>NARRATIVE:</b>

<b>Burn Initiation Time:</b>		<b>Burn Unit #:</b>		<b>Latitude:</b>	
<b>Burn Boss:</b>		<b>FBAN/LTAN:</b>		<b>Longitude:</b>	

<b>PRESCRIBED FIRE IMPLEMENTATION COST SUMMARY</b>	<b>PROJECT NAME:</b>		<b>PREPARED BY:</b>	
	<b>BURN UNIT(S):</b>		<b>DATE:</b>	

PROJECT IMPLEMENTATION COSTS		ACTUAL COSTS (\$)
Ignition Crew Costs (personnel only)		
Holding/Contingency Crew Costs (personnel only)		
Mop-Up & Patrol Costs (personnel only)		
Engine Costs (vehicle FOR & mileage only)		
Heavy Equipment Costs (including operators & transport costs)		
Overhead Costs (burn team)		
Aircraft Costs (includes recon aircraft hours)		
Ignition Supplies		
Holding/Contingency Supplies		
Dispatcher Costs		
Cooperating Agency Costs (include in-kind assistance)		
Safety Supplies (include personal protective equipment)		
Normal wear & tear to existing equipment		
Contracts (include fuel supplies, etc.)		
Other (specify)		
<b>TOTAL OF ALL ACTUAL IMPLEMENTATION COSTS (in whole dollars)</b>		

**IMPLEMENTATION COST CALCULATION:**

<b>TOTAL COST</b>		<b>DIVIDED BY</b>		<b>ACRES = \$</b>		<b>PER ACRE</b>
-------------------	--	-------------------	--	-------------------	--	-----------------

**NOTE:** These costs DO NOT include planning and monitoring costs but only identify the actual costs associated with IMPLEMENTATION of the project. Resource personnel should record all other costs associated with the project to obtain the actual unit costs for the entire project.

**PRESCRIBED FIRE BEHAVIOR FORECAST - SHORT RANGE**

**PROJECT NAME:**

**PREDICTION NUMBER:**

**ADMIN. SUBUNIT:**

**OPERATIONAL PERIOD:**

**TIME & DATE ISSUED:**

**NAME OF ANALYST:**

**WEATHER SUMMARY:**

**GENERAL FIRE BEHAVIOR:**

**SPECIFIC FIRE BEHAVIOR:**

**AIR OPERATIONS:**

**SAFETY:**

**Remember: Base all actions on current and expected fire behavior!**



**PRESCRIBED FIRE BEHAVIOR FORECAST - LONG RANGE**

<b>PROJECT NAME:</b>		<b>PREDICTION NUMBER:</b>	
<b>ADMIN. SUBUNIT:</b>		<b>OPERATIONAL SPAN:</b>	
<b>TIME &amp; DATE ISSUED:</b>		<b>NAME OF ANALYST:</b>	

**WEATHER SUMMARY:**

**GENERAL FIRE BEHAVIOR:**

**SPECIFIC FIRE BEHAVIOR (BY SUB-CATEGORY):**

**SHORT-RANGE (0-5 DAYS):**

**MID-RANGE (6-10 DAYS):**

**LONG-RANGE (11+ DAYS):**

**CLIMATIC TRENDS (INCLUDING DROUGHT):**

**SAFETY:**

**Remember: Base all actions on current and expected fire behavior!**

<b>PRESCRIBED FIRE CONTINUATION SHEET</b>	<b>CONTINUATION OF FORM NAME:</b>		<b>PAGE NO. OF TOTAL NO.</b>	
			<b>OTHER:</b>	
DFPC-Rx-400 (Continuation) 03/2014				

RISK/HAZARD ANALYSIS	ROCKY MOUNTAIN AREA	LEAD AGENCY	ADMINISTRATIVE UNIT	
PRESCRIBED FIRE IMPLEMENTATION OPERATIONS	NAME OF ANALYST	JOB TITLE	DATE PREPARED	
AGENCY ADMINISTRATOR APPROVAL (SIGNATURE)			DATE:	
TASKS/PROCEDURES	HAZARDS	ABATEMENT ACTIONS Engineering Controls * Substitution * Administrative Controls * PPE		
1. Driving to work site	<p>General operations and public traffic.</p> <p>Steep, narrow roads</p> <p>Unsecured loads.</p> <p>Hauling flammable substances.</p> <p>Transporting sharp tools.</p> <p>Loading vehicles.</p>	<p>Use defensive driving techniques at all times.</p> <p>Drive cautiously so that you can stop in less than ½ of your usual distance. Drive with headlights on.</p> <p>Check loads for secureness before departing - use tie downs.</p> <p>Use appropriate containers for hauling diesel and/or gasoline. Flammable solids should be in appropriate containers and secured.</p> <p>Use guards, cages, boxes, or tool mounts.</p> <p>Use proper lifting and carrying techniques.</p>		
2. Driving at or near the work site	<p>Backing or turning in small areas.</p> <p>Rough, rocky, muddy, snow-packed or icy conditions.</p> <p>Heavy truck traffic between units and water source.</p> <p>Smoke, dust, poor visibility.</p> <p>Parking near a prescribed burn.</p> <p>Public Safety.</p>	<p>Use spotters. Face the hazard while turning around. Avoid tight turn-a-rounds if possible.</p> <p>Maintain speed commensurate with conditions. Utilize all-wheel or four-wheel drive vehicles.</p> <p>Maintain radio communications and alert other drivers in the area. Use headlights whenever driving. Use emergency and/or warning lights.</p> <p>Place a guide on foot ahead of the vehicle. Wait until smoke is less dense. Lights on. Use light bars and/or warning lights. Consider dust abatement if severe dust conditions persist.</p> <p>Use parking brake and chock blocks. Leave keys in ignition, avoid leaving exposed flammable material in bed of vehicle. All windows closed. Park vehicles in cleared areas, or in areas containing only light fuels.</p> <p>Post signs and/or use road guards or blocks if necessary.</p>		

TASKS/PROCEDURES	HAZARDS	ABATEMENT ACTIONS Engineering Controls * Substitution * Administrative Controls * PPE
3. ATV's	<p>Driving ATV's.</p> <p>Vehicle maintenance.</p> <p>Close proximity to fire, intense heat, erratic fire behavior.</p> <p>Rough terrain, heavy ground fuels, side hills and slopes.</p> <p>Noise of ATV and fire obscures verbal warnings.</p> <p>Inadvertent ignitions of mobile torch.</p>	<p>Operated by trained and licensed drivers only. Lights on. Avoid steep slopes. Use extreme caution when traversing slopes with loads.</p> <p>Thorough inspection of vehicles and ignition equipment.</p> <p>Use hand held radios, close supervision, lookouts. All personnel will be equipped with proper PPE, including Nomex shirts and pants, leather boots and gloves, helmets, fire shelters, and eye protection.</p> <p>Scout and locate accessible routes before they are traveled, make dry run with experienced operator or supervised trainee. Fire by hand if needed.</p> <p>Hand held radios required of all ignition personnel. Hard hats instead of helmets to facilitate communications if appropriate.</p> <p>Preplan ignition on/off points, check wand apparatus on regular basis. Notify holding crew.</p>
4. Handling flammable materials	<p>Exposure to sparks.</p> <p>Eye or skin contamination from fuel.</p> <p>Leaking containers or torches.</p> <p>Improper gas/diesel ratios for burn fuel.</p> <p>Slippery surfaces from spilled fuel.</p> <p>Muscle or back strain lifting heavy objects.</p>	<p>Use proper containers, move away from hot areas, no smoking.</p> <p>Gloves, goggles, leather lace-up boots, and Nomex clothing required.</p> <p>Empty and tag in field, have repairs made before next use.</p> <p>Use labels on containers, field test small amounts before use.</p> <p>Make every effort to avoid spilling fuel, where feasible. Install non-slip material on fuel truck beds. Clean up spills as soon as possible.</p> <p>Use proper lifting techniques. Get help if items are too heavy.</p>
5. Equipment set-up	<p>Operating pumps and mechanized equipment exhaust burns, loose clothing.</p> <p>Application of slippery retardant, foam or poor footing</p> <p>Crew people working uphill from each other (rolling debris).</p>	<p>Tuck in shirt tails, remove scarfs and jewelry. Proper clothing, gloves, and boots.</p> <p>Eight-inch lug sole, lace-up boots. Avoid slick areas if possible.</p> <p>Post lookouts. Shout warnings.</p>

TASKS/PROCEDURES	HAZARDS	ABATEMENT ACTIONS Engineering Controls * Substitution * Administrative Controls * PPE
<p>5. Equipment set-up (continued)</p> <p>6. Firing operations (hand ignition)</p> <p>6a. Firing (flares)</p> <p>6b. Firing (terra torch)</p>	<p>Operating high pressure nozzles.</p> <p>Traversing rocky terrain.</p> <p>Noise from pumps and saws.</p> <p>Rolling debris</p> <p>Close proximity to intense heat and erratic fire behavior.</p> <p>Smoke, sparks, and cinders.</p> <p>Poor footing, steep slopes, heavy fuels.</p> <p>Noise of fire obscures verbal warnings.</p> <p>Burning fuel dripping from torches. Burns from drip torches.</p> <p>Misguided lighter lighting wrong area(s).</p> <p>Risks associated with firing projectiles or flares.</p> <p>Inadvertent firing over/under shot resulting in activity outside project boundaries.</p> <p>Intrinsic danger of using terra torch.</p> <p>Vehicle maintenance</p> <p>Close proximity to fire, intense heat, erratic fire behavior.</p>	<p>Maintain visual contact with pump operator and other crew members, whenever possible. Use backup person behind the nozzle man. Eye protection required for nozzle operators.</p> <p>Eight inch lug sole boots, slow cautious movement. Carry tools and equipment on downhill side when traversing slopes.</p> <p>Use hearing protection (ear plugs or muffs).</p> <p>Use hand held radios, close supervision, and lookouts. Consider aerial ignition.</p> <p>Use hand held radios, close supervision, and lookouts. All personnel wear required PPE including Nomex shirts and pants, hard hat, leather gloves, eight-inch leather, lug sole boots, and fire shelters.</p> <p>Avoid very dense smoke whenever possible. Alter firing patterns. Rotate personnel out of the worst smoke areas.</p> <p>Constant awareness, learn to identify hazard area(s). Slow down. Work in pairs and post lookouts when needed.</p> <p>Hand held radios for all ignition personnel. Maintain communications between ignition and holding personnel.</p> <p>Lighters stay alert to where torch head is. Close air vent when not actually lighting.</p> <p>Know location of others. Radios for all lighting personnel. Close supervision. Conduct briefing for all personnel prior to ignition operations.</p> <p>Basic firearms safety rules followed, separation of ammo by type and size, access to launchers limited to trained personnel or those undergoing training.</p> <p>Post lookouts. Notify firing boss and holding specialist. Holding crews extinguish spot subsequent to further ignition. Maintain constant communications between ignition and holding personnel.</p> <p>Terra torch is to be operated under supervision of the ignition specialist.</p> <p>Use only with trained operator's i.e., driver, operator, and engine support.</p> <p>Thorough inspection of vehicle and ignition equipment. Electrical connections and grounds all in working order.</p>
DFPC-Rx-401 (Risk Analysis) Page 3 of 6		

TASKS/PROCEDURES	HAZARDS	<b>ABATEMENT ACTIONS</b> <b>Engineering Controls *Substitution * Administrative Controls * PPE</b>
<p>6b. Firing (terra torch) (continued)</p>	<p>Rough terrain/roads, ground fuels, side hills and slopes.</p> <p>Chemical exposure, mixing/transferring.</p> <p>Flammable vapors, liquids, and solids.</p> <p>Slippery surfaces from spilled fuel.</p>	<p>Use hand held radios, close supervision, and lookouts. Proper PPE required for firing with torch. Consider discreet frequency for firing operations using terra torch.</p> <p>Terra torch use restricted to roads or two tracks, pre-scouted paths or routes only. Fire by hand if necessary.</p> <p>Trained personnel only. Well-ventilated area. All containers grounded Cotton clothing required for all mixing crew personnel.</p> <p>Terra torch mixing group will wear 100% cotton clothing. All containers grounded. Clean up all spills.</p> <p>Make every effort to avoid spilling fuel, install non-slip material on decking, absorbent material for spills will be in torch kit.</p>
<p>6c. Firing (helitorch, PSD)</p>	<p>Hazards of aircraft use combined with ignition systems.</p> <p>Apparatus viability</p> <p>Flight routes, project area and flight following coordination (MOA's, TFR's, etc).</p>	<p>Aerial ignition apparatus thoroughly maintained inspected tested before installing with aircraft. Pilot has ultimate GO/NO GO authority.</p> <p>Aviation operations to be coordinated by certified personnel. HECM on project site. Trained and experienced personnel operating ignition equipment. Separate operating plan and risk assessment developed.</p> <p>Follow guidelines and restrictions as stated in IHOG, file special use safety plan, coordinate w/appropriate aviation officer(s) and dispatch centers.</p>
<p>7. Holding (includes all of "Equipment set up" item)</p>	<p>Carrying sharp tools.</p> <p>Tool use.</p> <p>Snag falling.</p> <p>Burned off snags or widow-makers.</p>	<p>Keep tool guards on while traveling, remove only while in use. All required PPE worn (See Section 6 - Firing Operations).</p> <p>Proper crew training, with close supervision by crew boss(s) and holding specialist.</p> <p>Falling/ bucking to be done only by trained and certified personnel only.</p> <p>Avoid entering burned over area. Post lookout(s) and flag hazards. Obtain professional faller if needed.</p>
<p>DFPC-Rx-401 (Risk Analysis) Page 4 of 6</p>		



**RISK ANALYSIS FIELD REVIEW AND BRIEFING RECORD**

**Employee Name**

**Employee Name**


<b>BRIEFING DATE:</b>		<b>BRIEFING TIME:</b>		<b>BRIEFING LEADER:</b>	
---------------------------	--	---------------------------	--	-----------------------------	--



<b>PRESCRIBED FIRE PHOTO POINT RECORD</b>	<b>PROJECT NAME:</b>		<b>PREPARED BY:</b>	
	<b>BURN UNIT(S):</b>		<b>DATE:</b>	

**INITIAL / RETAKE (Circle One)**

<b>DATE:</b>		<b>TIME (24 HR):</b>		<b>CAMERA:</b>		<b>WEATHER:</b>	
--------------	--	----------------------	--	----------------	--	-----------------	--

**DIRECTIONS TO PHOTO POINT:**

VIEW 1		VIEW 2		VIEW 3	
Camera Height		Camera Height		Camera Height	
Vert. Variance +/-		Vert. Variance +/-		Vert. Variance +/-	
Bearing		Bearing		Bearing	

**COMMENTS:**

<b>PRESCRIBED FIRE ESTIMATED COST CALCULATION</b>	<b>PROJECT NAME:</b>		<b>PREPARED BY:</b>	
	<b>BURN UNIT:</b>		<b>DATE:</b>	

<b>DESCRIPTION</b>	<b>UNITS</b>	<b>UNIT COST</b>	<b>TOTAL</b>
Project planning			
Burn plan development			
Pre-burn monitoring			
Pre-burn site prep.			
Ignition crew			
Holding/Contingency crew			
Mop-up & patrol			
Engine costs			
Smoke monitoring			
Post-burn monitoring			
Heavy equipment			
Overhead costs			
Aircraft costs			
Ignition supplies			
Holding/Contingency supplies			
Dispatch costs			
Co-op agency costs			
Safety supplies			
Normal wear & tear			
Administrative tap(s)			
Other			

<b>TOTAL OF ALL ESTIMATED COSTS (in whole dollars)</b>	
--	--

<b>UNIT COST CALCULATION</b>						
<b>TOTAL COST</b>		<b>DIVIDED BY</b>		<b>ACRES = \$</b>		<b>PER ACRE</b>

DFPC-Rx- 410 (Cost Estimate) 03/2014