

Sedgwick County Wildfire Protection Plan



Sedgwick VFD Ovid VFD Julesburg VFD
Sedgwick County BOCC
Sedgwick County Sheriff Office
Sedgwick County OEM

Sedgwick County Community Wildfire Protection Plan Mutual Agreement Page

The Community Wildfire Protection Plan developed for Sedgwick County,
Colorado;


Was collaboratively developed. Interested parties and federal land management
agencies managing land in the vicinity of Sedgwick County have been consulted.

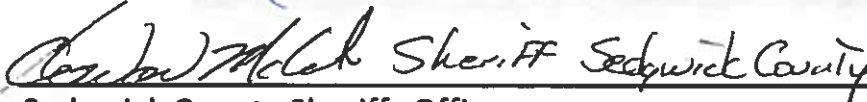
This plan identifies and prioritizes areas for hazardous fuels reduction treatments
and recommends the types and methods of treatment that will protect Sedgwick
County.

This plan recommends measures to reduce the ignitability of structures
throughout the area addressed by the plan.

The following entities mutually agree with the contents of this Community
Wildfire Protection Plan.


Sedgwick County Board of County Commissioners
7-7-14
Date


Sedgwick County Office of Emergency Management
4/14/15
Date


Sedgwick County Sheriffs Office
9/7/16
Date


Town of Sedgwick
Sedgwick Vol Fire Department
9/12/16
Date


Town of Ovid
Ovid Vol Fire Department

09.25.14
Date


Town Of Julesburg
Julesburg Vol Fire Department

9-8-2016
Date


Colorado State Forest Service

9/28/16
Date

Colorado Division of Wildlife

Date

Decision Making Entities

Sedgwick County Board of County Commissioners

Sedgwick County Office of Emergency Management

Sedgwick County Sheriffs Office

Sedgwick Volunteer Fire Dept.

Ovid Volunteer Fire Dept.

Julesburg Volunteer Fire Dept.

Town of Sedgwick

Town of Ovid

Town of Julesburg

State Entities

Colorado State Forest Service

Colorado Division of Wildlife

The Bureau of Land Management is also being notified of CWPP development in the County

Plan Components

A. Wildland Urban Interface (WUI)

The reason for writing a CWPP is to give local fire fighter, Sheriff personel, Local Boards, and the public as to how to prevent and protect people, properties, crops, and grasslands from wildfires in our county.

Communities are Julesburg population of 1530; Ovid population of 346; Sedgwick population of 173; Unincorporated population of 838.

Sedgwick County population is 2887. Sedgwick county has a land area of 549 square miles.

General – The county is rural with populations centered around the communities. Major state hwys are (N-S) hwy 385 & hwy 59, (E-W) hwy 138 & Interstate I-76 .

The Union Pacific Railroad main line is just south of Julesburg and is in the county approximately 8 miles. The Denver branch of the railroad breaks off in Julesburg and follows hwy 138 across the county from E-W. The South Platte River flows from West to East across the county with thick growth of trees (mainly cottonwood), brush and grass. Three Wildlife areas on the river are managed by the Colorado Division of Wildlife, these are Tamarac SWA, Ovid SWA and The Pony Express SWA, the rest is privately owned. One Recreation area in the county is Jumbo Reservoir. Vegetation in the County is trees, brush and tall grasses on river. Pasture ground is tall grass, short grass and sage. Crops include Wheat, corn, sunflowers, other grain crops and beans.

B. Preparedness to respond to Wildland Fires

Sedgwick County and community Volunteer fire dept serve and protect 2887 residents and 549 square miles within the county and have MOU,s with surrounding counties for assistance and to assist. 911 is used for emergency calls within the county.

The fire departments include- Sedgwick Volunteer Fire Department (29 members), Ovid Volunteer Fire Department (25 members), Julesburg Volunteer Fire Department (25 members).

Additionally MOU's are in place with surrounding counties for assistance and to assist. Also agreements are in place with local chemical companies for water tankers.

Sedgwick County can initiate a red flag warning which ceases all burning in the county. Also all three fire districts can initiate red flag warnings on their own district and the Colorado Division of Wildlife will initiate burning bans in the Jumbo Reservoir recreation area.

Local Office of emergency management will coordinate with district emergency manager and Colorado office of Emergency Management.

C. Community Risk Analysis (Risk, Fuels, Values) and Wildfire Mitigation Assessment Mapping

(See Appendix A for a complete discussion of the risk analysis and assessment mapping for Sedgwick County)

1- Communities (HHH)

- 2- Railroad Corridors (HHM)
- 3- Travel Corridors (HHM)
- 4- Recreational areas (MHM)
- 5- Platte Valley River (LHM)
- 6- High Value Agricultural Areas (LLH)
- 7- Rural Areas (LMH & LLH)

Note Abbreviations – High (H), Medium (M), Low (L)

Note Abbreviation – HHH means High Risk, High Fuel, High Value. LMH means low Risk, Medium Fuel, High Value.

Discussion- Areas rated HHH are of highest priority due to risk, fuels and values in Sedgwick County. Areas with 2 HHs are also of high concern. For example, high fuels and high values can easily create a scenario taxing limited resources. Risk may be low or medium, however a large wildfire would still create a potential economic burden to the taxpayer in the county. The same could apply to high risk and high values- although the fuel is not rated high, it does not preclude the event causing significant resource depletion.

Areas rated with two or three L's are a concern and should be considered when funding or resource opportunities arise, however they are not high priority.

Therefore, Sedgwick County's Mapped high concern "Red Zones" might include Area 1 (three HHH's). Areas 2 & 3 with (two HH's) are of concern. Areas 4, 5, 6, 7, are not an immediate priority (only 1 H).

Due to typical county wind driven fire events and other fire behaviors factors including high temperatures, low relative humidity, dry ignitable flashy fuels; along with distance and immediate access to many rural locations; and the nature of volunteer fire organizations with manpower/response factors to consider – arbitrary lines have been drawn around zones. For example, one mile either side of a travel corridor in a "typical" fire scenario may be more than enough buffer. However in a wind driven event or late in the season when vegetation is cured – a one-mile "buffer" may not be sufficient. Six miles may not be sufficient. For planning purposes, we are allowing flexibility with our zone boundaries to allow the overall goal of fire prevention/mitigation needs to be addressed.

D. Fuels Definition and Treatment Methods Discussion

Hazard Fuel Definitions-

High Fuels are defined as Riparian (cottonwood, Brush); Conservation Reserve program grasses (CRP); Division of Wildlife areas (DOW) Grasses; stubble/crop residue; weeds/tumbleweeds; dwellings (greater than five/sections); and/or man-made windbreaks (greater than five/sections).

Medium fuels include short and medium prairie grass; prairie sage; fence row tumbleweeds; dwellings (1-5 per section) and/or man-made windbreaks (1-5 per section)

Low fuels are defined as non-irrigated croplands, zero dwellings; and/or zero man-made windbreaks.

General Fuels Treatment Methods-

Riparian treatments (cottonwood, brush) includes combinations of mechanical removal, chemical treatment, firewood (cottonwood), wood chipping, pile burning and/or hauling away brush.

High and medium fuel grasses; stubble/crop residue, prairie sage, weeds/tumbleweeds treatments may include mechanical methods (mowing, grazing), and/or prescribed burning.

Dwellings and/or man-made windbreaks/plantings treatments may include mowing or grazing around structures, breaking up continuous ground fuels and/or ladder fuels, thinning, deadwood removal (see structural ignitability for dwelling concepts).

E. Structural Ignitability Reduction Discussion

Firewise Awareness –

Public awareness of Firewise concepts and self-implementation of applicable concepts may help landowners potentially reduce the risk of structural ignitability in the event of an encroaching wildfire.

Firewise concepts include – Are You At Risk!, Access, water supply, defensible space, trees and shrubs, construction design and materials, Interior safety, and what to do when....

Target Audiences and Outreach-

Targets are Homeowners/Rural businesses in Sedgwick County.

Long- Term Implementation Plan (5- Year)

(See Appendix B for Specific Annual Workplan.)

General Discussion-

Broad, long- term mitigation strategies discussed at our various meetings included;

Initiating public awareness in Firewise Concepts (i.e., Are you at Risk!, Access, Water Supply, Defensible Space, Trees and shrubs, Construction Design and Materials, Interior safety, and (What to do When..). Target audiences could include homeowners/rural businesses.

Providing “General Outdoor Fire Safety” brochures to various publics (smoking, outdoor camping fires, trash burning, agricultural burning, spark arresters, etc). Target audiences could include homeowners/rural businesses, recreational users, tourists, highway corridor travelers, and railroad personnel.

Tactics for the accomplishing the above included-

Initiating countywide information outreach through public radio announcements, local cable TV coverage, Sedgwick County web-site alerts, newspaper articles, highway signage, county fair booth participation, local event opportunities, (Fire Prevention week, annual food events, Senior Citizen events, bazaars, etc.).

Providing educational material including Firewise 3-ring binder available for check out to homeowners (library/fire department); booklets and/or handouts for local events; CDs/PDFs for distribution; Firewise educational handouts for schools.

Providing Firewise presentations or trainings and/or Homeowners Homestead Assessments (example *Living with Fire – A Guide for the Homeowner*) to interested groups/clubs to support public awareness and public inquiry.

Annual workplans could include components of the above and/or additional updated ideas and suggestions as appropriate for the mitigation effort that year.

Long-term Mitigation Strategies Discussed By Area-

Long-term mitigation strategies (ideas) for the different areas identified in the Sedgwick County Mitigation Assessment Map were discussed at our various

meetings, and are listed below. Mitigation includes utilizing a potential mix of tools and resources, generally categorized as- 1) Education and Outreach; 2) Rules/Restrictions/Ordinances, and Enforcement; 3) Prevention Planning; 4) Fuel Mitigation; 5) Suppression; 6) Grants and Administration.

Efforts already in place are included-

1 – Communities (HHH)

Concern- High Risk, High Fuels, High Values

Mitigation-

Education and outreach- Present Firewise Concept to various Public/Groups/Organizations (examples – Civic/Ag Clubs, fire departments)

County Ordinance – The County has a red flag fire ban agreement in place

Fuel mitigation – Mowing breaks, spraying, dead tree and brush removal.

Suppression – Existing volunteer fire departments

Consider Grants – Local, USDA, And DOLA

2 – Railroad Corridors (HHM)

Concern – High Risk, High Fuels, Medium Values

Mitigation-

Education- Signage for public corridors

Ordinances & Enforcement- US dept of Transportation/ Union Pacific Railroad/ County

Fuel Mitigation- Union Pacific Railroad mowing and spraying/ County Mowing and spraying/ private mowing and spraying

Suppression – Existing volunteer fire departments

Grants- As opportunity arises

3- Travel Corridors (HHM)

Concern – High Risk, High Fuels, Medium Values

Mitigation-

Education- Signage for public corridors

Ordinances & Enforcement- US Department of Transportation/ Colorado Department of Transportation/ County

Fuel Mitigation- CDOT mowing I-76, Hwy 138, Hwy 385, And Hwy 59/ County mowing and spraying/ private mowing and spraying

Suppression- Existing volunteer fire departments

Grants – As Opportunities arises

4- Recreational Areas- (MHM)

Concerns- Medium Risk, High Fuels, Medium Values

Mitigation-

Education- Signage

Rules/Restrictions, Ordinances & Enforcement- Colorado Division of Wildlife/ County

Fuel Mitigation- DOW fire rings, private mowing, and fire breaks

Suppression- Existing volunteer fire departments

Grants- As Opportunities arises

5- Platte Valley River (LHM)

Concerns- Low Risk, High Fuels, Medium Values

Mitigation-

Education- Signage

Rules/Restrictions, Ordinances & Enforcement – Colorado Division of Wildlife/ County

Fuel Mitigation- private

Suppression- Existing Volunteer fire departments

Grants- As Opportunities arises

6- High Value Agricultural (LLH)

7- Rural Areas (LMH & LLH)

Concern – Low Risk, Low/Medium Fuels, High Values

Mitigation-

Areas 6 and 7 are not an immediate priority

Appendix A:

Sedgwick County Community Wildfire Protection Planning Fire Protection Assessment

Sedgwick County and 3 local Fire Dept Capabilities and projects for Improvement:

Sedgwick County

Sedgwick County: The County has done a good job of mapping the county, Map show all county roads and road numbers, also shows irrigated crop circles. All County roads have signs, unless damaged all are highly visible.

Improvements: 1: to improve location of rural residents address signage needs to be highly recommended at driveways to residents.

2: Have location of remote water locations properly marked on maps so fire dept can locate at a glance.

3: Have on maps marked in red hazard all bridges and culverts that have weight restriction, some water tankers and larger pieces of equipment exceed these restrictions.

Fire Departments

Sedgwick Fire: Equipment for wildfire includes two fast attack units, one water tanker, and one pumper unit.

Ovid Fire: Equipment for wildfire includes two fast attack units, one water tanker, and one pumper unit.

Julesburg Fire: Equipment for wildfire include two fast attack units, one water tanker, one pumper unit, and one 6X6 tanker mop up unit.

All Fire departments have MOU,s with each other for mutual aid and work very well together.

Improvements: The only real improvement would be response time. But this is a problem for all volunteer fire departments. All that can be done is if one department has trouble, through Mutual aid call on other departments.

Sedgwick County Community Wildfire Protection Planning

Fire Protection Assessment*

Team: Sedgwick County Partners

Objectives: Complete a fire protection assessment of Sedgwick County, Assigning High, Medium, or Low ratings on these components;

1. Risk (potential for ignition): human activity and lightening
2. Hazard (potential to burn): fuels and topography
3. Values (potential for loss): natural or developed areas where loss or destruction by wildfire would be unacceptable.
4. Fire occurrence history.

Process: Using Sedgwick County map as the base:

1. **Risk layer:** make a clear overlay outlining areas of risk in red, medium risk in yellow, everything else will be low risk. Areas of high risk are those containing the most potential for a fire to start due to human activity or lightning; medium risk areas are those containing substantial potential for fire starts, but less than the high risk areas.
2. **Hazard layer:** make a second clear overlay marking areas of high hazard in red, medium hazards in yellow, and all else is low hazard.

The following definitions of high, medium, and low hazard ratings were determined:

Fuels & Topography

Low

Fuels	Non-Irrigated cropland
Dwellings (as fuel)	0 per section
Windbreaks	
Living snow fences	1 per section

Medium

Fuels	Short grass prairie Medium grass prairie Prairie Sage Fence row tumbleweeds
Dwellings (as Fuel)	1-5 per section
Windbreaks,	
Living snow fences	1-5 per section

High

Fuels	Riparian (trees & Brush) CRP grass/Stubble/Crop Residue Weeds/tumbleweeds
Dwellings (as fuel)	Greater than 5 per section
Windbreaks	
Living snow fences	Greater than 5 per section

3. **Value layer:** make a third clear overlay showing high value areas in red, medium value areas in orange, and all else is considered low value. High value areas are those containing the most values whose loss to wildfire would be unacceptable. Medium areas contain substantial values to be protected from wildfire, but fewer than high value areas.
4. Place the 3 clear overlays showing risk, hazard, and values on top of each other and put a fourth clear overlay on top of them. Draw adjusted boundaries on the top overlay. Mark the resulting compartments with H,M, or L (High, Medium or Low) for Risk, Hazards, or Value. Finally, number these compartments.
5. Copy final compartments boundaries, compartment numbers, and 3-letter ratings with black marker onto county map.

6. Complete Fire Protection Assessment forms for each compartment, documenting the compartment number, its rating, and what risks and values are present.
7. This document, along with the fire Protection Assessment forms, and the final map is the Fire Protection Assessment package. The map may be digitized to produce a GIS map.

Uses & Examples: The areas marked on map as HHH (High risk, high hazard, high value) become the priority areas for prevention work, pre-attack planning, suppression resource placement, funding requests, mitigation, and other resource work planning.

Further fire protection assessments within the compartments may be mapped, in finer detail, to support on-the-ground work, such as prescribed fire, training, prevention events (schools, county fairs, festivals, parades, booths, etc.), public education, homestead wildfire mitigation, fuel breaks, signing, and other projects.

- The Wildfire Mitigation Assessment exercise outlines the first five steps in the eight- step Community Wildfire Protection Plan (CWPP) process initiated under the National Fire Plan
- Additionally the Society of American Foresters outline for CWPP process.

Fire Protection Assessment For Sedgwick County, Colorado *Communities*

Area number 1 Rating: Risk H Hazard H Value H

RISK COMPONENTS (POTENTIAL FOR IGNITION) PRESENT IN THIS AREA:

- | | |
|--|--|
| <input type="checkbox"/> Debris burning (Trash/Pit Burning)
<input type="checkbox"/> Travel corridors
<input type="checkbox"/> Railroads
<input type="checkbox"/> Lighting
<input type="checkbox"/> Electric fences
<input type="checkbox"/> Power lines
<input checked="" type="checkbox"/> Community/rural intermix
<input type="checkbox"/> Off-highway vehicles
<input type="checkbox"/> Recreation
<input type="checkbox"/> Campgrounds
<input type="checkbox"/> Water recreation &/or fishing
<input type="checkbox"/> Hunting (Seasonal Fall/Winter)
<input type="checkbox"/> Trails
<input type="checkbox"/> National Park Activities | <input type="checkbox"/> Children with matches
<input type="checkbox"/> Electronic sites
<input type="checkbox"/> Oil/Gas/mining/propane
<input type="checkbox"/> Construction sites
<input type="checkbox"/> Maintenance projects/canal project
<input type="checkbox"/> Dumps
<input type="checkbox"/> Agricultural burning
<input type="checkbox"/> Scenic areas
<input type="checkbox"/> Fireworks
<input type="checkbox"/> Party areas
<input type="checkbox"/> Firewood cutting
<input checked="" type="checkbox"/> Other High Population centers
<input type="checkbox"/> Wheat harvest (June-July)
<input type="checkbox"/> Harvests (Sept/Oct) |
|--|--|

HAZARDS COMPONENT (POTENTIAL TO BURN)

Fuel &

<u>Topography</u>	Low	Medium	High
Fuels	Non-Irrigated Cropland	Short grass prairie Medium grass prairie Prairie sage Fence row Tweeds	Riparian (Trees, brush) CRP grass/tall grass Weeds/tumbleweeds
Dwellings (as fuel)	0 per section	1-5 per section	<u>Greater than 5 per section</u>
Windbreaks Living Snow fences	1 per section	1-5 per section	Greater than 5 per section

VALUES PRESENT IN THIS AREA (POTENTIAL FOR LOSS)

- | | |
|--|---|
| <input checked="" type="checkbox"/> People/Life | <input type="checkbox"/> Rare and endangered wildlife |
| <input checked="" type="checkbox"/> Residential/commercial development | <input type="checkbox"/> Rare and endangered plants |
| <input type="checkbox"/> Wildlife habitat | <input type="checkbox"/> Water/riparian areas |
| <input type="checkbox"/> Wilderness (designated) | <input type="checkbox"/> Watershed |
| <input type="checkbox"/> Wild & Scenic rivers | <input type="checkbox"/> Soils |
| <input type="checkbox"/> Visual resources | <input type="checkbox"/> Minerals |
| <input type="checkbox"/> Political values | <input type="checkbox"/> Cultural resources |
| <input type="checkbox"/> Range/grazing | <input type="checkbox"/> Timber |
| <input type="checkbox"/> Scenic byways | <input type="checkbox"/> Developed recreation |
| <input type="checkbox"/> Hog farms | <input type="checkbox"/> Dispersed recreation |
| <input type="checkbox"/> Windbreaks, living snow fences | |

Prairie Wildlife – All High Value—

Assess with DOW, as applying mitigation strategies

Fire Protection Assessment For Sedgwick County, Colorado *Railroad Corridors*

Area number 2 Rating: Risk H Hazard H Value M

RISK COMPONENTS (POTENTIAL FOR IGNITION) PRESENT IN THIS AREA:

- | | |
|---|---|
| <input type="checkbox"/> Debris burning (Trash/Pit Burning)
<input checked="" type="checkbox"/> Travel corridors
<input checked="" type="checkbox"/> Railroads
<input type="checkbox"/> Lighting
<input type="checkbox"/> Electric fences
<input type="checkbox"/> Power lines
<input type="checkbox"/> Community/rural intermix
<input type="checkbox"/> Off-highway vehicles
<input type="checkbox"/> Recreation
<input type="checkbox"/> Campgrounds
<input type="checkbox"/> Water recreation &/or fishing
<input type="checkbox"/> Hunting (Seasonal Fall/Winter)
<input type="checkbox"/> Trails
<input type="checkbox"/> National Park Activities | <input type="checkbox"/> Children with matches
<input type="checkbox"/> Electronic sites
<input type="checkbox"/> Oil/Gas/mining/propane
<input type="checkbox"/> Construction sites
<input type="checkbox"/> Maintenance projects/canal project
<input type="checkbox"/> Dumps
<input type="checkbox"/> Agricultural burning
<input type="checkbox"/> Scenic areas
<input type="checkbox"/> Fireworks
<input type="checkbox"/> Party areas
<input type="checkbox"/> Firewood cutting
<input type="checkbox"/> Other High Population centers
<input type="checkbox"/> Wheat harvest (June-July)
<input type="checkbox"/> Harvests (Sept/Oct) |
|---|---|

HAZARDS COMPONENT (POTENTIAL TO BURN)

Fuel &

Topography	Low	Medium	High
-------------------	-----	--------	------

Fuels	Non-Irrigated Cropland	<u>Short grass prairie</u> <u>Medium grass prairie</u> <u>Prairie sage</u> <u>Fence row Tweeds</u>	Riparian (Trees, brush) CRP grass/tall grass Weeds/tumbleweeds
Dwellings (as fuel)	0 per section	1-5 per section	Greater than 5 per section
Windbreaks Living Snow fences	1 per section	1-5 per section	Greater than 5 per section

VALUES PRESENT IN THIS AREA (POTENTIAL FOR LOSS)

- | | |
|---|---|
| <input type="checkbox"/> People/Life | <input type="checkbox"/> Rare and endangered wildlife |
| <input type="checkbox"/> Residential/commercial development | <input type="checkbox"/> Rare and endangered plants |
| <input checked="" type="checkbox"/> Wildlife habitat | <input type="checkbox"/> Water/riparian areas |
| <input type="checkbox"/> Wilderness (designated) | <input type="checkbox"/> Watershed |
| <input type="checkbox"/> Wild & Scenic rivers | <input type="checkbox"/> Soils |
| <input type="checkbox"/> Visual resources | <input type="checkbox"/> Minerals |
| <input type="checkbox"/> Political values | <input type="checkbox"/> Cultural resources |
| <input checked="" type="checkbox"/> Range/grazing | <input type="checkbox"/> Timber |
| <input type="checkbox"/> Scenic byways | <input type="checkbox"/> Developed recreation |
| <input type="checkbox"/> Hog farms | <input type="checkbox"/> Dispersed recreation |
| <input type="checkbox"/> Windbreaks, living snow fences | |

Prairie Wildlife – All High Value—

Assess with DOW, as applying mitigation strategies

Fire Protection Assessment For Sedgwick County, Colorado *Travel Corridor*

Area number 3 Rating: Risk H Hazard H Value M

RISK COMPONENTS (POTENTIAL FOR IGNITION) PRESENT IS THIS AREA:

- | | |
|--|---|
| <input type="checkbox"/> Debris burning (Trash/Pit Burning)
<input checked="" type="checkbox"/> Travel corridors
<input type="checkbox"/> Railroads
<input type="checkbox"/> Lighting
<input type="checkbox"/> Electric fences
<input type="checkbox"/> Power lines
<input type="checkbox"/> Community/rural intermix
<input type="checkbox"/> Off-highway vehicles
<input type="checkbox"/> Recreation
<input type="checkbox"/> Campgrounds
<input type="checkbox"/> Water recreation &/or fishing
<input type="checkbox"/> Hunting (Seasonal Fall/Winter)
<input type="checkbox"/> Trails
<input type="checkbox"/> National Park Activities | <input type="checkbox"/> Children with matches
<input type="checkbox"/> Electronic sites
<input type="checkbox"/> Oil/Gas/mining/propane
<input type="checkbox"/> Construction sites
<input type="checkbox"/> Maintenance projects/canal project
<input type="checkbox"/> Dumps
<input type="checkbox"/> Agricultural burning
<input type="checkbox"/> Scenic areas
<input type="checkbox"/> Fireworks
<input type="checkbox"/> Party areas
<input type="checkbox"/> Firewood cutting
<input type="checkbox"/> Other High Population centers
<input type="checkbox"/> Wheat harvest (June-July)
<input type="checkbox"/> Harvests (Sept/Oct) |
|--|---|

HAZARDS COMPONENT (POTENTIAL TO BURN)

Fuel &

Topography	Low	Medium	High
-------------------	-----	--------	------

Fuels	Non-Irrigated Cropland	<u>Short grass prairie</u> <u>Medium grass prairie</u> <u>Prairie sage</u> <u>Fence row Tweeds</u>	Riparian (Trees, brush) CRP grass/tall grass Weeds/tumbleweeds
Dwellings (as fuel)	0 per section	1-5 per section	Greater than 5 per section
Windbreaks Living Snow fences	1 per section	1-5 per section	Greater than 5 per section

VALUES PRESENT IN THIS AREA (POTENTIAL FOR LOSS)

- | | |
|---|---|
| <input type="checkbox"/> People/Life | <input type="checkbox"/> Rare and endangered wildlife |
| <input type="checkbox"/> Residential/commercial development | <input type="checkbox"/> Rare and endangered plants |
| <input checked="" type="checkbox"/> Wildlife habitat | <input type="checkbox"/> Water/riparian areas |
| <input type="checkbox"/> Wilderness (designated) | <input type="checkbox"/> Watershed |
| <input type="checkbox"/> Wild & Scenic rivers | <input type="checkbox"/> Soils |
| <input type="checkbox"/> Visual resources | <input type="checkbox"/> Minerals |
| <input type="checkbox"/> Political values | <input type="checkbox"/> Cultural resources |
| <input checked="" type="checkbox"/> Range/grazing | <input type="checkbox"/> Timber |
| <input type="checkbox"/> Scenic byways | <input type="checkbox"/> Developed recreation |
| <input type="checkbox"/> Hog farms | <input type="checkbox"/> Dispersed recreation |
| <input type="checkbox"/> Windbreaks, living snow fences | |

Prairie Wildlife – All High Value—

Assess with DOW, as applying mitigation strategies

Fire Protection Assessment For Sedgwick County, Colorado *Recreational Areas*

Area number 4 Rating: Risk M Hazard H Value M

RISK COMPONENTS (POTENTIAL FOR IGNITION) PRESENT IS THIS AREA:

- | | |
|--|---|
| <input type="checkbox"/> Debris burning (Trash/Pit Burning)
<input type="checkbox"/> Travel corridors
<input type="checkbox"/> Railroads
<input type="checkbox"/> Lighting
<input type="checkbox"/> Electric fences
<input type="checkbox"/> Power lines
<input type="checkbox"/> Community/rural intermix
<input checked="" type="checkbox"/> Off-highway vehicles
<input checked="" type="checkbox"/> Recreation
<input checked="" type="checkbox"/> Campgrounds
<input checked="" type="checkbox"/> Water recreation &/or fishing
<input checked="" type="checkbox"/> Hunting (Seasonal Fall/Winter)
<input type="checkbox"/> Trails
<input type="checkbox"/> National Park Activities | <input type="checkbox"/> Children with matches
<input type="checkbox"/> Electronic sites
<input type="checkbox"/> Oil/Gas/mining/propane
<input type="checkbox"/> Construction sites
<input type="checkbox"/> Maintenance projects/canal project
<input type="checkbox"/> Dumps
<input type="checkbox"/> Agricultural burning
<input type="checkbox"/> Scenic areas
<input type="checkbox"/> Fireworks
<input type="checkbox"/> Party areas
<input type="checkbox"/> Firewood cutting
<input type="checkbox"/> Other High Population centers
<input type="checkbox"/> Wheat harvest (June-July)
<input type="checkbox"/> Harvests (Sept/Oct) |
|--|---|

HAZARDS COMPONENT (POTENTIAL TO BURN)

Fuel &

Topography	Low	Medium	High
-------------------	-----	--------	------

Fuels	Non-Irrigated Cropland	<u>Short grass prairie</u> <u>Medium grass prairie</u> <u>Prairie sage</u> <u>Fence row Tweeds</u>	Riparian (Trees, brush) CRP grass/tall grass Weeds/tumbleweeds
Dwellings (as fuel)	0 per section	1-5 per section	Greater than 5 per section
Windbreaks Living Snow fences	1 per section	1-5 per section	Greater than 5 per section

VALUES PRESENT IN THIS AREA (POTENTIAL FOR LOSS)

- | | |
|---|--|
| <input type="checkbox"/> People/Life | <input type="checkbox"/> Rare and endangered wildlife |
| <input type="checkbox"/> Residential/commercial development | <input type="checkbox"/> Rare and endangered plants |
| <input checked="" type="checkbox"/> Wildlife habitat | <input type="checkbox"/> Water/riparian areas |
| <input type="checkbox"/> Wilderness (designated) | <input type="checkbox"/> Watershed |
| <input type="checkbox"/> Wild & Scenic rivers | <input type="checkbox"/> Soils |
| <input type="checkbox"/> Visual resources | <input type="checkbox"/> Minerals |
| <input type="checkbox"/> Political values | <input type="checkbox"/> Cultural resources |
| <input checked="" type="checkbox"/> Range/grazing | <input type="checkbox"/> Timber |
| <input type="checkbox"/> Scenic byways | <input checked="" type="checkbox"/> Developed recreation |
| <input type="checkbox"/> Hog farms | <input type="checkbox"/> Dispersed recreation |
| <input type="checkbox"/> Windbreaks, living snow fences | |

Prairie Wildlife – All High Value—

Assess with DOW, as applying mitigation strategies

Fire Protection Assessment For Sedgwick County, Colorado *Platte Valley River*

Area number 5 Rating: Risk M Hazard H Value M

RISK COMPONENTS (POTENTIAL FOR IGNITION) PRESENT IS THIS AREA:

- | | |
|--|--|
| <input type="checkbox"/> Debris burning (Trash/Pit Burning)
<input type="checkbox"/> Travel corridors
<input type="checkbox"/> Railroads
<input type="checkbox"/> Lighting
<input type="checkbox"/> Electric fences
<input type="checkbox"/> Power lines
<input type="checkbox"/> Community/rural intermix
<input checked="" type="checkbox"/> Off-highway vehicles
<input checked="" type="checkbox"/> Recreation
<input checked="" type="checkbox"/> Campgrounds
<input checked="" type="checkbox"/> Water recreation &/or fishing
<input checked="" type="checkbox"/> Hunting (Seasonal Fall/Winter)
<input type="checkbox"/> Trails
<input type="checkbox"/> National Park Activities | <input type="checkbox"/> Children with matches
<input type="checkbox"/> Electronic sites
<input type="checkbox"/> Oil/Gas/mining/propane
<input type="checkbox"/> Construction sites
<input type="checkbox"/> Maintenance projects/canal project
<input type="checkbox"/> Dumps
<input type="checkbox"/> Agricultural burning
<input type="checkbox"/> Scenic areas
<input type="checkbox"/> Fireworks
<input type="checkbox"/> Party areas
<input checked="" type="checkbox"/> Firewood cutting
<input type="checkbox"/> Other High Population centers
<input type="checkbox"/> Wheat harvest (June-July)
<input type="checkbox"/> Harvests (Sept/Oct) |
|--|--|

HAZARDS COMPONENT (POTENTIAL TO BURN)

Fuel &

Topography	Low	Medium	High
-------------------	-----	--------	------

Fuels	Non-Irrigated Cropland	<u>Short grass prairie</u> <u>Medium grass prairie</u> <u>Prairie sage</u> <u>Fence row Tweeds</u>	Riparian (Trees, brush) CRP grass/tall grass Weeds/tumbleweeds
Dwellings (as fuel)	0 per section	1-5 per section	Greater than 5 per section
Windbreaks Living Snow fences	1 per section	1-5 per section	Greater than 5 per section

VALUES PRESENT IN THIS AREA (POTENTIAL FOR LOSS)

- | | |
|---|---|
| <input type="checkbox"/> People/Life | <input type="checkbox"/> Rare and endangered wildlife |
| <input type="checkbox"/> Residential/commercial development | <input type="checkbox"/> Rare and endangered plants |
| <input checked="" type="checkbox"/> Wildlife habitat | <input type="checkbox"/> Water/riparian areas |
| <input type="checkbox"/> Wilderness (designated) | <input type="checkbox"/> Watershed |
| <input type="checkbox"/> Wild & Scenic rivers | <input type="checkbox"/> Soils |
| <input type="checkbox"/> Visual resources | <input type="checkbox"/> Minerals |
| <input type="checkbox"/> Political values | <input type="checkbox"/> Cultural resources |
| <input checked="" type="checkbox"/> Range/grazing | <input type="checkbox"/> Timber |
| <input type="checkbox"/> Scenic byways | <input type="checkbox"/> Developed recreation |
| <input type="checkbox"/> Hog farms | <input type="checkbox"/> Dispersed recreation |
| <input type="checkbox"/> Windbreaks, living snow fences | |

Prairie Wildlife – All High Value—

Assess with DOW, as applying mitigation strategies

Fire Protection Assessment For Sedgwick County, Colorado *High Value Agricultural Areas*

Area number 6 Rating: Risk L Hazard L Value H

RISK COMPONENTS (POTENTIAL FOR IGNITION) PRESENT IS THIS AREA:

- | | |
|---|---|
| <input type="checkbox"/> Debris burning (Trash/Pit Burning) | <input type="checkbox"/> Children with matches |
| <input type="checkbox"/> Travel corridors | <input type="checkbox"/> Electronic sites |
| <input type="checkbox"/> Railroads | <input type="checkbox"/> Oil/Gas/mining/propane |
| <input type="checkbox"/> Lighting | <input type="checkbox"/> Construction sites |
| <input type="checkbox"/> Electric fences | <input type="checkbox"/> Maintenance projects/canal project |
| <input type="checkbox"/> Power lines | <input type="checkbox"/> Dumps |
| <input type="checkbox"/> Community/rural intermix | <input type="checkbox"/> Agricultural burning |
| <input type="checkbox"/> Off-highway vehicles | <input type="checkbox"/> Scenic areas |
| <input type="checkbox"/> Recreation | <input type="checkbox"/> Fireworks |
| <input type="checkbox"/> Campgrounds | <input type="checkbox"/> Party areas |
| <input type="checkbox"/> Water recreation &/or fishing | <input type="checkbox"/> Firewood cutting |
| <input type="checkbox"/> Hunting (Seasonal Fall/Winter) | <input type="checkbox"/> Other High Population centers |
| <input type="checkbox"/> Trails | <input checked="" type="checkbox"/> Wheat harvest (June-July) |
| <input type="checkbox"/> National Park Activities | <input checked="" type="checkbox"/> Harvests (Sept/Oct) |

HAZARDS COMPONENT (POTENTIAL TO BURN)

Fuel &

Topography Low Medium High

Fuels	Non-Irrigated Cropland	Short grass prairie Medium grass prairie Prairie sage Fence row Tweeds	Riparian (Trees, brush) CRP grass/tall grass Weeds/tumbleweeds
Dwellings (as fuel)	0 per section	1-5 per section	Greater than 5 per section
Windbreaks Living Snow fences	1 per section	1-5 per section	Greater than 5 per section

VALUES PRESENT IN THIS AREA (POTENTIAL FOR LOSS)

- | | |
|---|---|
| <input type="checkbox"/> People/Life | <input type="checkbox"/> Rare and endangered wildlife |
| <input type="checkbox"/> Residential/commercial development | <input type="checkbox"/> Rare and endangered plants |
| <input type="checkbox"/> Wildlife habitat | <input type="checkbox"/> Water/riparian areas |
| <input type="checkbox"/> Wilderness (designated) | <input type="checkbox"/> Watershed |
| <input type="checkbox"/> Wild & Scenic rivers | <input type="checkbox"/> Soils |
| <input type="checkbox"/> Visual resources | <input type="checkbox"/> Minerals |
| <input type="checkbox"/> Political values | <input type="checkbox"/> Cultural resources |
| <input type="checkbox"/> Range/grazing | <input type="checkbox"/> Timber |
| <input type="checkbox"/> Scenic byways | <input type="checkbox"/> Developed recreation |
| <input checked="" type="checkbox"/> Hog farms | <input type="checkbox"/> Dispersed recreation |
| <input type="checkbox"/> Windbreaks, living snow fences | |

Prairie Wildlife – All High Value—

Assess with DOW, as applying mitigation strategies

Fire Protection Assessment For Sedgwick County, Colorado *Rural Areas*

Area number 7 Rating: Risk L Hazard M&L Value H

RISK COMPONENTS (POTENTIAL FOR IGNITION) PRESENT IN THIS AREA:

- | | |
|---|--|
| <input type="checkbox"/> Debris burning (Trash/Pit Burning)
<input type="checkbox"/> Travel corridors
<input type="checkbox"/> Railroads
<input type="checkbox"/> Lighting
<input type="checkbox"/> Electric fences
<input type="checkbox"/> Power lines
<input type="checkbox"/> Community/rural intermix
<input type="checkbox"/> Off-highway vehicles
<input type="checkbox"/> Recreation
<input type="checkbox"/> Campgrounds
<input type="checkbox"/> Water recreation &/or fishing
<input type="checkbox"/> Hunting (Seasonal Fall/Winter)
<input type="checkbox"/> Trails
<input type="checkbox"/> National Park Activities | <input type="checkbox"/> Children with matches
<input type="checkbox"/> Electronic sites
<input type="checkbox"/> Oil/Gas/mining/propane
<input type="checkbox"/> Construction sites
<input type="checkbox"/> Maintenance projects/canal project
<input type="checkbox"/> Dumps
<input checked="" type="checkbox"/> Agricultural burning
<input type="checkbox"/> Scenic areas
<input type="checkbox"/> Fireworks
<input type="checkbox"/> Party areas
<input type="checkbox"/> Firewood cutting
<input type="checkbox"/> Other High Population centers
<input type="checkbox"/> Wheat harvest (June-July)
<input type="checkbox"/> Harvests (Sept/Oct) |
|---|--|

HAZARDS COMPONENT (POTENTIAL TO BURN)

Fuel &

<u>Topography</u>	<u>Low</u>	<u>Medium</u>	<u>High</u>
Fuels	Non-Irrigated Cropland	Short grass prairie Medium grass prairie Prairie sage Fence row Tweeds	Riparian (Trees, brush) CRP grass/tall grass Weeds/tumbleweeds
Dwellings (as fuel)	0 per section	1-5 per section	Greater than 5 per section
Windbreaks Living Snow fences	1 per section	1-5 per section	Greater than 5 per section

VALUES PRESENT IN THIS AREA (POTENTIAL FOR LOSS)

- | | |
|--|---|
| <input type="checkbox"/> People/Life | <input type="checkbox"/> Rare and endangered wildlife |
| <input type="checkbox"/> Residential/commercial development | <input type="checkbox"/> Rare and endangered plants |
| <input type="checkbox"/> Wildlife habitat | <input type="checkbox"/> Water/riparian areas |
| <input type="checkbox"/> Wilderness (designated) | <input type="checkbox"/> Watershed |
| <input type="checkbox"/> Wild & Scenic rivers | <input type="checkbox"/> Soils |
| <input type="checkbox"/> Visual resources | <input type="checkbox"/> Minerals |
| <input type="checkbox"/> Political values | <input type="checkbox"/> Cultural resources |
| <input type="checkbox"/> Range/grazing | <input type="checkbox"/> Timber |
| <input type="checkbox"/> Scenic byways | <input type="checkbox"/> Developed recreation |
| <input type="checkbox"/> Hog farms | <input type="checkbox"/> Dispersed recreation |
| <input checked="" type="checkbox"/> Windbreaks, living snow fences | |

Prairie Wildlife – All High Value—

Assess with DOW, as applying mitigation strategies

Fire Protection Assessment For Sedgwick County, Colorado

Area number _____ Rating: Risk _____ Hazard _____ Value _____

RISK COMPONENTS (POTENTIAL FOR IGNITION) PRESENT IS THIS AREA:

- | | |
|---|---|
| <input type="checkbox"/> Debris burning (Trash/Pit Burning)
<input type="checkbox"/> Travel corridors
<input type="checkbox"/> Railroads
<input type="checkbox"/> Lighting
<input type="checkbox"/> Electric fences
<input type="checkbox"/> Power lines
<input type="checkbox"/> Community/rural intermix
<input type="checkbox"/> Off-highway vehicles
<input type="checkbox"/> Recreation
<input type="checkbox"/> Campgrounds
<input type="checkbox"/> Water recreation &/or fishing
<input type="checkbox"/> Hunting (Seasonal Fall/Winter)
<input type="checkbox"/> Trails
<input type="checkbox"/> National Park Activities | <input type="checkbox"/> Children with matches
<input type="checkbox"/> Electronic sites
<input type="checkbox"/> Oil/Gas/mining/propane
<input type="checkbox"/> Construction sites
<input type="checkbox"/> Maintenance projects/canal project
<input type="checkbox"/> Dumps
<input type="checkbox"/> Agricultural burning
<input type="checkbox"/> Scenic areas
<input type="checkbox"/> Fireworks
<input type="checkbox"/> Party areas
<input type="checkbox"/> Firewood cutting
<input type="checkbox"/> Other High Population centers
<input type="checkbox"/> Wheat harvest (June-July)
<input type="checkbox"/> Harvests (Sept/Oct) |
|---|---|

HAZARDS COMPONENT (POTENTIAL TO BURN)

Fuel &

Topography Low Medium High

Fuels	Non-Irrigated Cropland	Short grass prairie Medium grass prairie Prairie sage Fence row Tweeds	Riparian (Trees, brush) CRP grass/tall grass Weeds/tumbleweeds
Dwellings (as fuel)	0 per section	1-5 per section	Greater than 5 per section
Windbreaks Living Snow fences	1 per section	1-5 per section	Greater than 5 per section

VALUES PRESENT IN THIS AREA (POTENTIAL FOR LOSS)

- | | |
|---|---|
| <input type="checkbox"/> People/Life | <input type="checkbox"/> Rare and endangered wildlife |
| <input type="checkbox"/> Residential/commercial development | <input type="checkbox"/> Rare and endangered plants |
| <input type="checkbox"/> Wildlife habitat | <input type="checkbox"/> Water/riparian areas |
| <input type="checkbox"/> Wilderness (designated) | <input type="checkbox"/> Watershed |
| <input type="checkbox"/> Wild & Scenic rivers | <input type="checkbox"/> Soils |
| <input type="checkbox"/> Visual resources | <input type="checkbox"/> Minerals |
| <input type="checkbox"/> Political values | <input type="checkbox"/> Cultural resources |
| <input type="checkbox"/> Range/grazing | <input type="checkbox"/> Timber |
| <input type="checkbox"/> Scenic byways | <input type="checkbox"/> Developed recreation |
| <input type="checkbox"/> Hog farms | <input type="checkbox"/> Dispersed recreation |
| <input type="checkbox"/> Windbreaks, living snow fences | |

Prairie Wildlife – All High Value—

Assess with DOW, as applying mitigation strategies

Appendix B:
Sedgwick County Community Wildfire Protection Planning

Sedgwick County Community Wildfire Protection Plan

Annual Workplan

The purpose of the Community Wildfire Protection Plan is to provide stakeholders and those living in Sedgwick County with an overview of the wildland fire risks, hazards and values within the planning area; recommend possible courses of action to reduce the impacts of wildfire in the planned area; and to share a current action plan.

The Main goals are to: 1) share the CWPP and Mitigation Assessment Map with the community at large (via club presentations, media, local events, and the County Fair); 2) educate homeowners and rural businesses on Firewise concepts (via club presentations, media, local events, and the County Fair); 3) purchase and place low/medium/high fire danger signage at appropriate places in the county; and, 4) provide Firewise educational materials to elementary school teachers and students during Fire Prevention Week.

To this end, the CWPP group has identified action items. Action are generally categorized under – 1) Education and Outreach; 2) Rules/Restrictions/Ordinances, and Enforcement; 3) Prevention Planning; 4) Fuel Mitigation; 5) Suppression; 6) Grants and Administration.

A. Education and Outreach

1. Firewise education materials to RE-1 & RE-2 Schools in Sedgwick County

Who - Mark Turner, Shaun Ehnes & Team

What - Firewise education material

Where – Julesburg and Revere School Dist.

When - During school year

Cost - To be determined

2. Sedgwick County Fair information booth

Who - Mark Turner & Team

What - Work with existing clubs at fair to display CWPP/Firewise

Where – Sedgwick County Fair

When - Fair time

Cost - To be determined after signage component

3. Pamphlets/handouts
 - Who - Mark Turner & Team
 - What - Firewise Pamphlets
 - Where – location in the county
 - When- all the time
 - Cost - To be determined after signage component
4. CWPP/Map & Plains Firewise booklets and distribution
 - Who - Mark Turner & Team
 - What - Printed material & distribution mailings
 - Where- Key communities, fire departments, agencies/governments in
County
 - When - yearly
 - Cost - To be determined after signage component.
5. Civil/Ag club presentations
 - Who - Mark Turner & Team
 - What – Firewise presentation & CWPP planning/plan
 - Where – Sedgwick County
 - When - yearly
6. Media Releases
 - Who - Justin Tjaden & Team
 - What - CWPP planning initial stage; Sedgwick County Mitigation Assessment Map; Annual plan implementation; Signage; School Prevention materials.
 - Where - Julesburg Advocate
 - When - When needed
7. Other local events
 - Who - Mark Turner & Team
 - What - Potential civic/agricultural club follow-ups
 - Where – To be Determined
 - When - when need arises

B. Ordinances/Rules/Restrictions & Enforcement

1. Update of signage
 - Who - Sheriffs Dept & DOW
 - What - Maintain rating level on signage
 - Where – Determined Locations
 - When - As conditions Change

C. Prevention Planning

- Who - Local Emergency Planning Committee
- What - maintain the CWPP and work with all entities to the Firewise cause
- Where - County wide
- When - Quarterly

D. Mitigation And Revegetation (as Applicable)

1. Fire danger signage (low/medium/high)in designated areas
 - Who - Sheriffs department & DOW
 - What - Identify, purchase, and arrange for installation of signage
 - Where - in designated areas
 - When - as needed
2. Fuel Mitigation
 - Who - Local Fire Departments & OEM
 - What - identify fuels and advise on means of removing hazards
 - Where - throughout Sedgwick County
 - When - as needed

E. Grants and Administration

1. Grant needs & writing
 - Who - Sedgwick County
 - What - identify the needs & writing of grants to fill those needs
 - Where - Sedgwick County Courthouse
 - When - as needed

Appendix C:

Fire Department 20 Minute Response Map

Sedgwick VFD (Green)

Ovid VFD (Blue)

Julesburg (Red)

Appendix C (continued)

CWPP Sedgwick County Maps

Map 2 (Risk)

High (Red)

Medium (Yellow)

Low (rest of map)

Map 3 (Hazard)

High (Red)

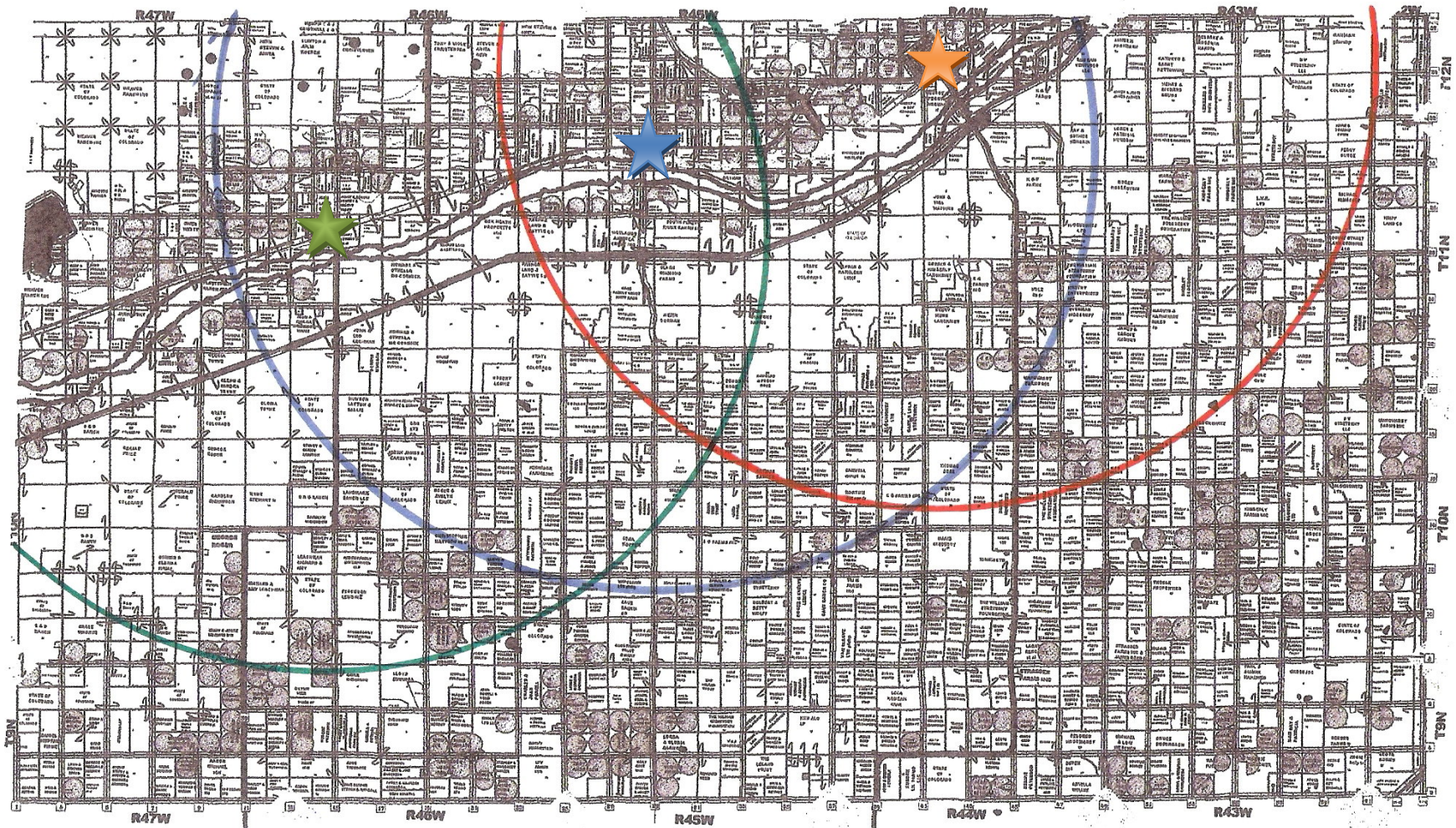
Medium (Yellow)

Low (Rest of Map)

Appendix C: 1

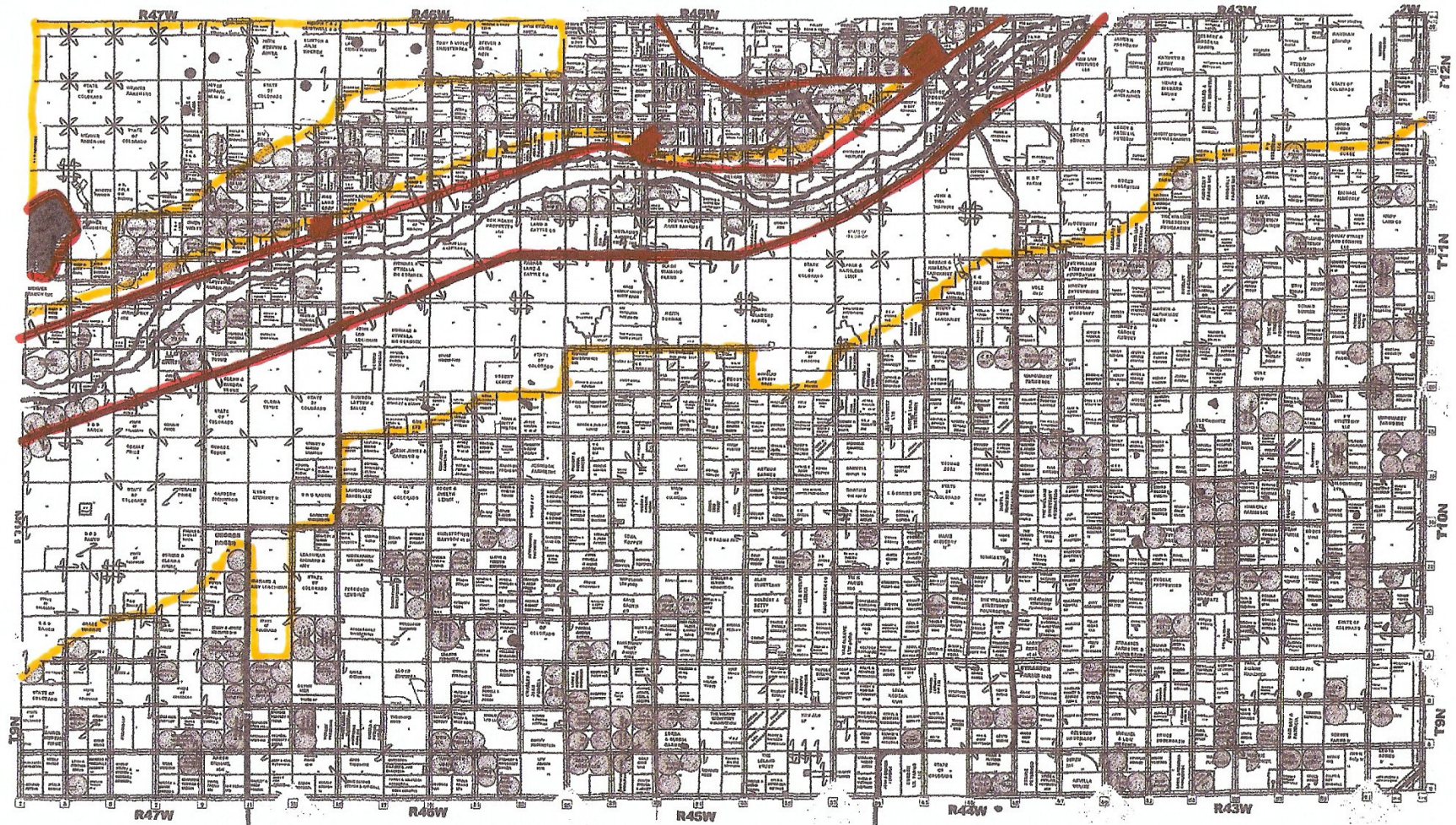
Sedgwick County

20 Minute Response Area



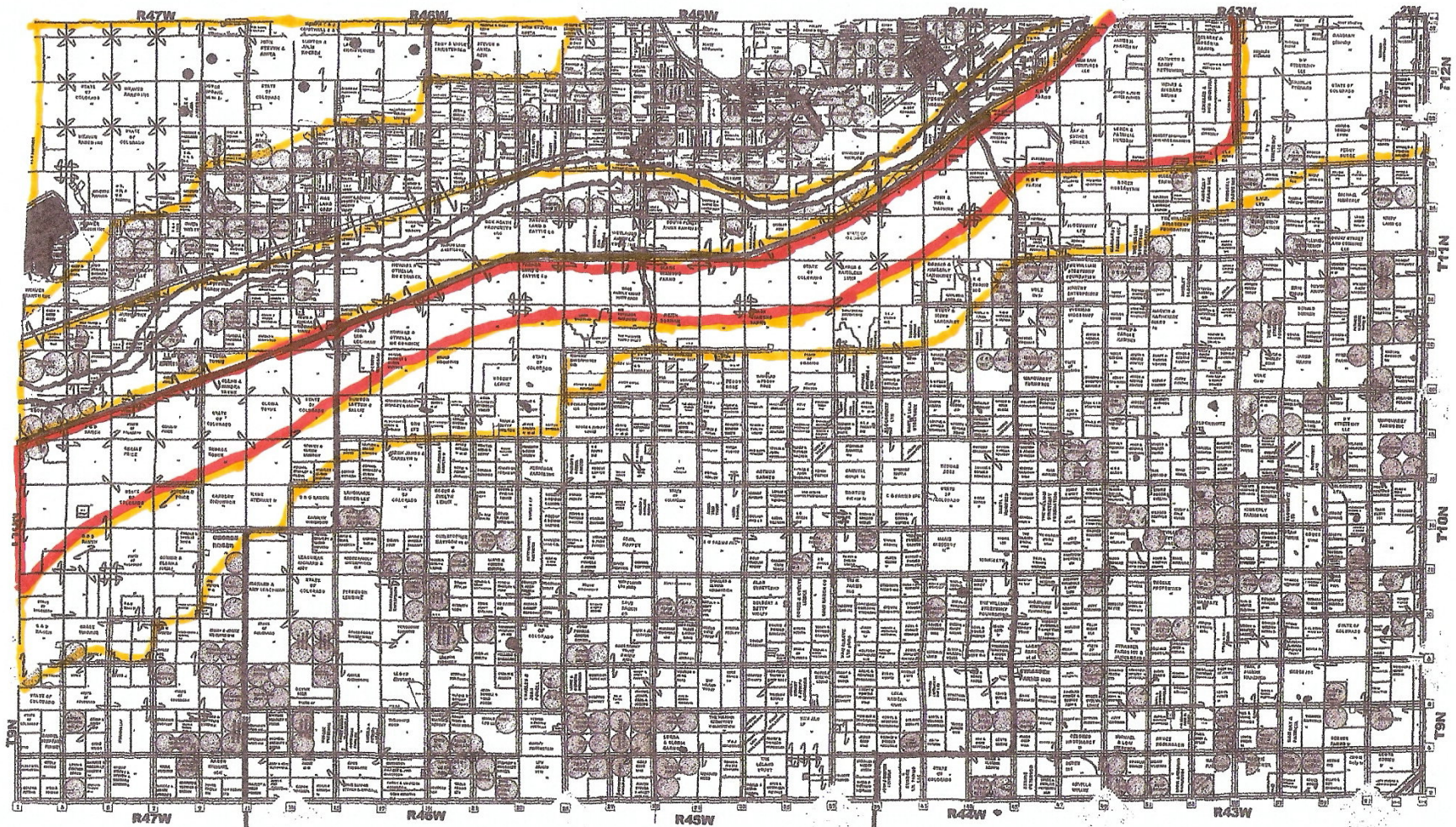
Appendix C: 2 (Risk)

Sedgwick County Community Wildfire Protection Plan



Appendix C: 3 (Hazard)

Sedgwick County Community Wildfire Protection Plan



APPENDIX C: 4

SEDGWICK COUNTY

County Roads

