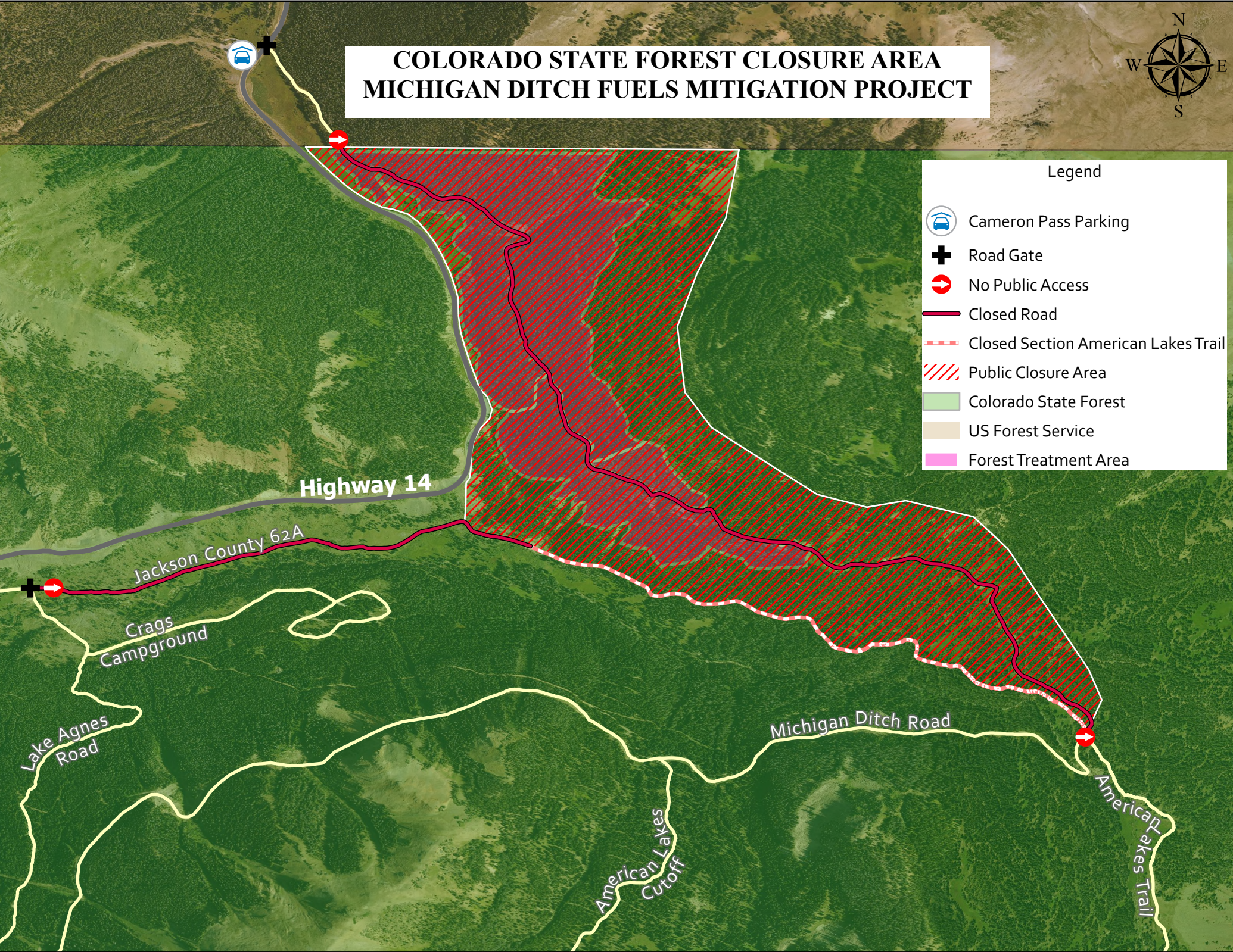


COLORADO STATE FOREST CLOSURE AREA MICHIGAN DITCH FUELS MITIGATION PROJECT



Legend

- Cameron Pass Parking
- Road Gate
- No Public Access
- Closed Road
- Closed Section American Lakes Trail
- Public Closure Area
- Colorado State Forest
- US Forest Service
- Forest Treatment Area



Highway 14

Jackson County 62A

Crags
Campground

Lake Agnes
Road

Michigan Ditch Road

American Lakes
Cutoff

American
Lakes Trail