
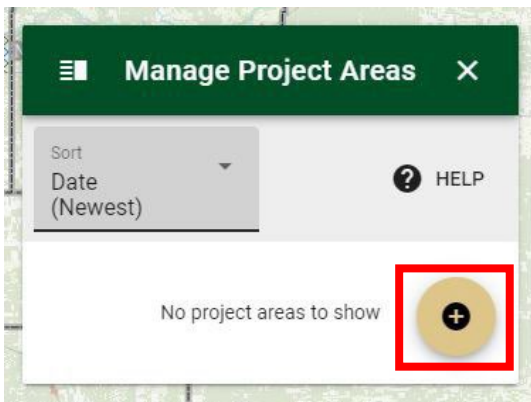
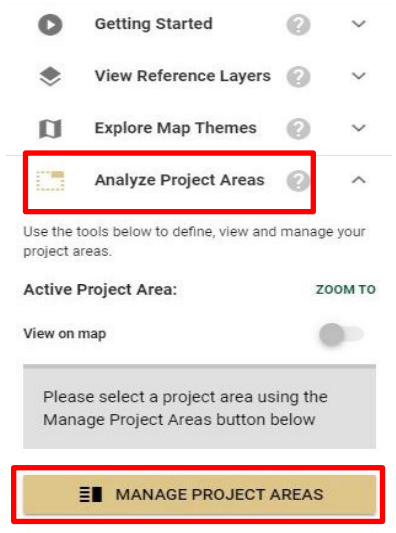




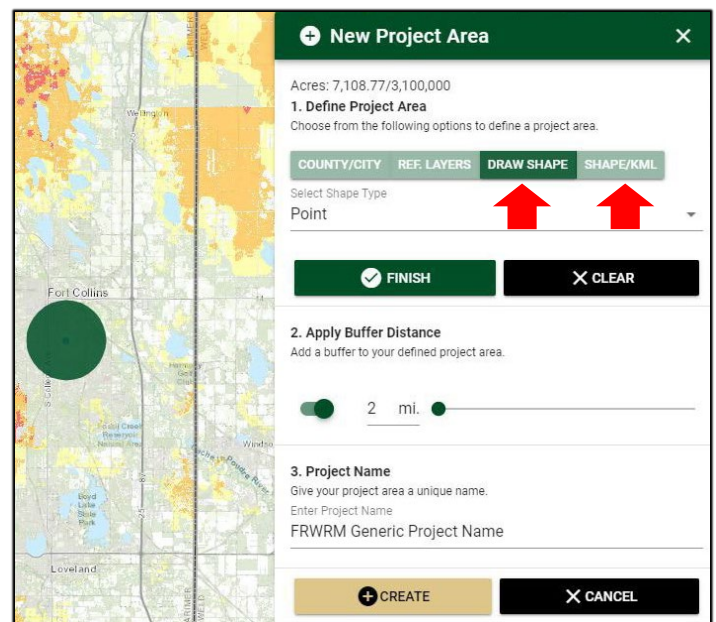
Creating Required FRWRM Project Area Map in the Colorado Forest Atlas with Composite Priority Theme and Social Vulnerability Index Layers Visible

From the [Colorado Forest Atlas homepage](#), users should launch the Wildfire Risk Reduction Planner application to create a project area, determine if project is within the WUI, view and print maps of the project area with the Composite Priority Theme overlaid and the Social Vulnerability Index layer visible. The Wildfire Risk Reduction Planner application requires that users create an account with the Colorado Forest Atlas, free of charge, before they can access the application. Account requests are usually approved within 1 day of submitting the request.

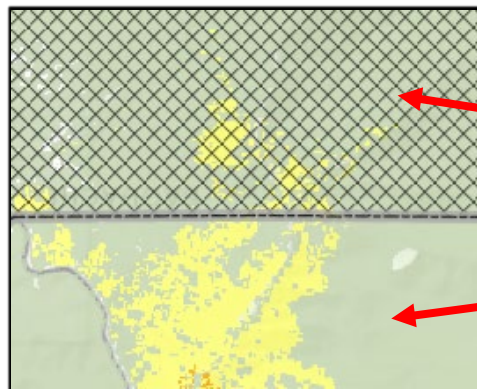
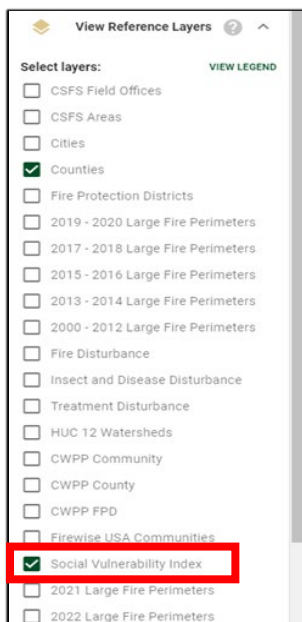
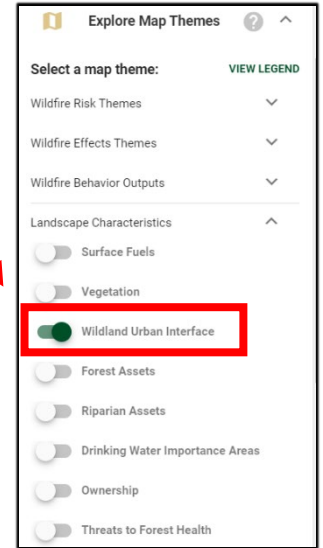
1. Launch the [Wildfire Risk Reduction Planner](#) application.
2. Navigate to the **Analyze Project Areas** section in the menu on the left and click the **Manage Project Areas** button. A **Manage Project Areas** menu box will open. 
3. Click the “+” button in the bottom right corner of the **Manage Project Areas** menu box to create a new project area.



The project area can be created by using the **Draw Shape** tool (point or polygon) or you can upload an existing shapefile or KML of the project area if you have one. Shapefiles must be in a compressed zip folder (.zip) and projected in *NAD 1983 UTM Zone 13N* coordinate reference system. See the Wildfire Risk Reduction Planner [User Manual](#) for more detailed instructions. **Note:** When uploading a shapefile, you must press the **Select** button and then click on your shapefile in the map (it should turn green when selected) and click **Finish**.



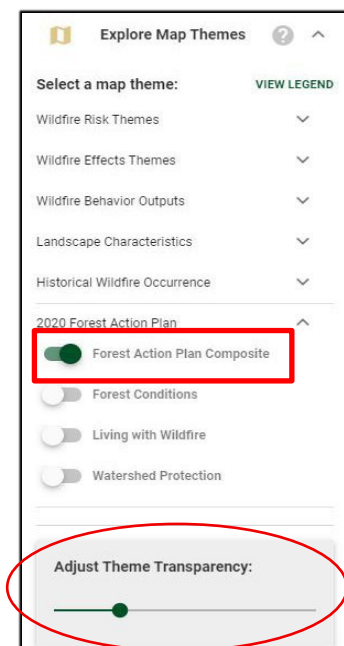
- After you've created the project area, select the project area within the **Manage Project Areas** box to activate this project area.
- Expand the **Explore Map Themes** in the menu on the left and click the **Landscape Characteristics** and turn on the **Wildland Urban Interface** layer. If your project area falls within or touches the Wildland Urban Interface layer, you can answer "YES" on this application questions. You can now turn the layer off.
- Expand the **Reference Layers** dropdown on the left menu bar and turn on the required **Social Vulnerability Index** layer and any other relevant layers such as Ownership or County Boundaries. If your project area falls within the cross-hatching, this indicates you are eligible for the reduced match rate of 25%. Keep this layer "on".



Inside cross-hatching
(eligible for 25% match)

Outside cross-hatching
(50% match required)

- Next, expand the **Map Themes** icon and make sure the 2020 Forest Action Plan **Forest Action Plan Composite Map** is enabled. Adjust the Theme Transparency to ensure any relevant Reference Layers are visible.



8. Scroll down on the left-hand side of the page to the **Print Map** function and click on **Print Map**. Click the check mark inside a circle on the map to indicate the area surrounded by the dashed rectangle is the area that you want included in the PDF map, and then click **Print**.

View Reference Layers ?

Explore Map Themes ?

Analyze Project Areas ?

Print Map ?

Enter in the title and description, then press print to generate a PDF of the map as it appears in the browser window.

Title (18/50)
FRWRM Project Name

Description (34/200)
Describe the FRWRM project here...

PRINT CLEAR

Export To Google Earth ?

9. The application will then create a map. This may take a moment. **A small pop-up window will appear that includes a “download” link to the PDF map.** Double check that the map includes all the relevant layers (SVI and Composite Priority are required). Save the map as a PDF for use in your application.

If further assistance is needed, reference the [user manual](#) on the Colorado Forest Atlas support page or contact your [local CSFS Field Office](#).

Forest Action Plan Composite Theme

The Forest Action Plan Composite represents priority areas where goals from the Forest Conditions, Living with Wildfire, and Watershed Protection themes can be achieved on the same management footprint by a project or activity. The Forest Conditions theme represents priority areas where opportunities exist to protect forests, enhance forest productivity, and promote adaptive management. The Living with Wildfire theme represents priority areas where opportunities exist to promote community fire adaptation, reduce the risk of uncharacteristic wildfire, and promote the role of fire in ecological processes. The Watershed Protection theme represents priority areas where opportunities exist to improve and maintain water quality and quantity, improve resiliency of critical water infrastructure, and sustain or restore fundamental ecological functions for watershed health. More information on the 2020 Colorado Forest Action Plan and Themes can be found on the [Forest Atlas Homepage](#).

Social Vulnerability Index

Researchers at Colorado State University, Department of Agriculture and Resource Economics and the Rocky Mountain Research Station assisted the CSFS in defining and developing a social vulnerability index (SVI) specific to wildland fire in Colorado to identify areas of fewer economic resources in the state. [This report](#) describes updates to the Index including updated data from the US Census, alignment with the CO [HB21-1266](#) EnviroScreen tool, and further analysis of the Index and reduced match criteria.

Additional risk maps, such as a CWPP map or other Forest Action Plan theme maps may be included with the application. All maps must be clearly labeled, and their relevance and significance to the project must be explained within the application narratives.