

**COMMUNITY WILDFIRE PROTECTION PLAN
(CWPP)
GLEN HAVEN/RETREAT COMMUNITIES
LARIMER COUNTY, COLORADO**

DEVELOPED BY:

GLEN HAVEN AREA VOLUNTEER FIRE DEPARTMENT, INC.

**STEVEN D. CHILDS, CHIEF
JASON GDOVICKAK, CAPTAIN
ROBERT BAUMING, LIEUTENANT
ERIK KRUSE, LIEUTENANT
GREG MARTIN, LIEUTENANT**

GLEN HAVEN ASSOCIATION

**TONY FINK, MD, PRESIDENT
JOAN VAN HORN, SECRETARY**

RETREAT LANDOWNERS ASSOCIATION

PEGGY BURCH, REPRESENTATIVE

COLORADO STATE FOREST SERVICE, FT. COLLINS DISTRICT

WENDY McCARTNEY, FORESTER

MAY, 2007

Community Wildfire Protection Plan

Glen Haven and The Retreat
Larimer County, Colorado

3/29/07

Introduction

This *Community Wildfire Protection Plan* (CWPP) was developed by Glen Haven and The Retreat with guidance and support from Tony Simons, Larimer County Emergency Services; Wendy McCartney, Colorado State Forest Service; Richard Edwards, Arapaho/Roosevelt National Forests; and Mike Lewelling, Rocky Mountain National Park. This CWPP supplements several Larimer County documents referenced in Appendix A. Information in this plan will be provided at a level of specificity determined by the community and appropriate agencies.

The process of developing a CWPP can help a community clarify and refine its priorities for the protection of life, property, and critical infrastructure in the wildland-urban interface. It can also lead community members through valuable discussions regarding management options and implications for the surrounding watershed.

Community / Agencies / Interested Parties Involved

Representatives involved in the development of the Glen Haven/The Retreat CWPP are included in the following table. Their name, organization, and roles and responsibilities are indicated below:

CWPP Development Team

Name	Organization	Roles / Responsibilities
<u>Tony Fink., Joan Van Horn, Peggy Birch</u>	Glen Haven/The Retreat Homeowners Association and/or Community Representatives	Primary development of CWPP and decision making – community risk and value assessment, development of community protection priorities, and establishment of fuels treatment project areas and methods
<u>Steve Childs, Jason Gdovicak, Robert Bauming, Greg Martin, Erik Kruse</u>	Glen Haven Volunteer Fire Department	Primary development of CWPP and decision making – community risk and value assessment, development of community protection priorities, and establishment of fuels treatment project areas and methods
<u>Wendy McCartney</u>	Colorado State Forest Service	Facilitation of planning process and approval of CWPP process and minimum standards. Provides input and expertise on forestry, fire and fuels, and FireWise concepts.
<u>Tony Simons</u>	Larimer County Wildfire Safety Program	Provides input and expertise on hazard assessment, defensible space, and FireWise concepts.
<u>Richard Edwards, Mike Lewelling</u>	Relevant federal land management agencies (USFS, BLM, etc.)	Provides input and expertise on federal lands forestry, fire and fuels, and FireWise concepts.
<u>Dave Jiles</u> (adjacent fire district)	Other organizations designated by the core team (Environmental groups, utilities, recreational groups, etc.)	Provides input and expertise. This could include community risk and value assessment, development of community protection priorities, and establishment of fuels treatment project areas and methods.

Identification of Values at Risk

Using technology and local expertise, Glen Haven and The Retreat have developed a base map and narrative of the community and adjacent landscapes of interest. This map will act as a visual aid from which community members can assess and make recommendations. The base map includes, at a minimum, the following:

- Inhabited areas and values at potential risk to wildland fire
- Areas containing critical human infrastructure—such as evacuation routes, municipal water supply structures, and major power or communication lines—that are at risk from wildfire
- A preliminary designation of the community's Wildland Urban Interface (WUI) zone.

Community Risk Assessment

The purpose of the community risk assessment is to help to prioritize areas for treatment and identify the highest priority uses for available financial and human resources. This section is divided into five areas of concern:

- Fuel Hazards – An evaluation of vegetation conditions within the community and on adjacent lands. Products included are:
 - Larimer County Wildfire Safety Program – Subdivision Wildfire Hazard Review
 - Larimer County Fuel Hazard Map

- Risk of Wildfire Occurrence – An evaluation of the probability of fire ignition within the community and surrounding lands.

- Risk to homes, businesses, and essential infrastructure – An evaluation of the vulnerability of structures within the community to ignition from firebrands, radiation, and convection. Also includes an evaluation of risks to essential infrastructure such as evacuation routes, water supply structures, and power and communication lines. Products may include:
 - Structure Assessment (construction materials, structure access, defensible space, etc.)
 - Infrastructure Assessment (utilities, water, community roads, power lines, etc.)

- Risk to Other Community Values – An evaluation of risk to other community values such as wildlife habitat, recreation and scenic areas, water supplies, and landscapes of historical, economic or cultural value.

- Local Preparedness and Firefighting Capability
 - Initial response to all fire, medical and associated emergencies is the responsibility of Glen Haven VFD. Wildland fire responsibilities of Larimer County, Colorado State Forest Service, United States Forest Service, Bureau of Land Management and the National Park Service are described in the current *Larimer County Annual Operating Plan*. All mutual aid agreements, training, equipment, and response are the responsibility of the local fire department and the agencies listed above.

Hazard Reduction Priorities

[Attach a prioritized list of community needs regarding fuel reduction treatments within the WUI zone.]

- Fuel reduction needs
- Fire response needs

Action Plan

Glen Haven and The Retreat have developed and attached an action plan which identifies roles and responsibilities, funding needs and timetables listed in Hazard Reduction Priorities. The core team will meet annually to evaluate progress and mutually agree on treatment priorities.

In cooperation with the Larimer County Fire Education Group, the Larimer Fire Council, and the Glen Haven VFD, Larimer County Emergency Services, Colorado State Forest Service, USFS-Arapaho/Roosevelt NF, and Rocky Mountain National Park, the communities of Glen Haven and The Retreat supports and promotes Firewise activities as outlined in the Larimer County Fire Plan. Glen Haven and The Retreat support and educate their citizens in ways to reduce structure ignitibility through meeting Larimer County Building Code Requirements and utilizing Colorado State Forest Service FireWise Construction Fact Sheets.

The following community representatives / agencies have reviewed and support this *Community Wildfire Protection Plan*.

__Steve Childs signed_____
Glen Haven Area Volunteer Fire Dept.

__Tony Fink Signed_____
Glen Haven Association Representative

__Wendy McCartney signed_____
Colorado State Forest Service, Ft. Collins District

__Peggy Burch signed_____
Retreat Landowners Association Representative

Appendix A

Larimer County Fire Plan: a Community Wildfire Protection Plan (Larimer County 2004)

Larimer County Wildfire Mitigation Plan (CSFS 1998)

Recommendations for Improving Wildfire Safety in Larimer County (CSFS 1997)

Larimer County Subdivision Wildfire Hazard Review (Larimer County/CSFS 2002)

Larimer County Annual Operating Plan (updated annually)

FEMA—Northern Colorado Natural Hazard Mitigation Plan (2004)

GLEN HAVEN/RETREAT CWPP
HISTORY AND NARRATIVE

GLEN HAVEN/RETREAT CWPP HISTORY AND NARRATIVE

The community of Glen Haven is located in a deep canyon area 7.5 miles north of the Town of Estes Park and 8 miles southwest of the community of Drake. The canyon, commonly known as Devil's Gulch, begins at its southern end with a very steep descent of some 700 feet from the northern reaches of the Estes Valley. Larimer County road 43 descends into the "Gulch" via a series of switchbacks, and follows the course of West Creek to a point where the confluence with the North Fork of the Big Thompson is reached in what is now "downtown" Glen Haven. The road continues another 8 miles northeast until it intersects U.S. Highway 34 and the community of Drake in the Big Thompson Canyon.

The area is surrounded by U.S. Forest Service lands and Wilderness Area. Rocky Mountain National Park boundaries are approximately 4 miles west of the community. Private properties in the area are largely contained in one of the two Home Owners Associations, the Glen Haven Association (GHA) and the Retreat Landowners Association (RLA). Other properties are located in the Dennis Subdivision along the West Creek in the southern part of the area, along County Road 43 between Glen Haven and Drake, on Crosier Mountain's northern and western aspects and on the southern aspect of Storm Mountain. The area contains 5 creek drainages which all feed the North Fork of the Big Thompson River: West Creek, Fox Creek, North Fork, Miller's Fork and Black Creek.

The GHA was organized in 1903 and is the oldest continuing Home Owners Association in Colorado. The GHA and the RLA are home to approximately 200 homes and cabins each. Most of the structures in the GHA are summer cabins which exceed 50 years in age. The structures are located along the Fox Creek or North Fork drainages which are accessed by narrow dirt roads approximately 1 ½ miles in length, and alongside County Road 43. Access to the GHA is on North Fork Road where it intersects County Road 43 next to the General Store in Glen Haven. Structures in the RLA are newer, but are spread among some 11 miles of narrow dirt roads. The main access roads to the RLA are Dunraven Glade (County Road 51B) at Mile Marker 9.3 on County Road 43, and Streamside Drive which intersects County Road 43 at Mile Marker 10.

The entire area is heavily forested with Lodgepole, Ponderosa and Spruce stands. Historically, the entire area has been considered a "High Risk" Wildfire area, along with much of the Front Range of the Rockies. Its susceptibility to heavy lightning activity during the Spring and Summer months, as well as being a hugely popular tourist destination create a challenge for Wildfire management. The Urban-Wildland Interface has grown over a period of almost 100 years. The increase in year-round residents, tourist activity and wildfire activity has prompted the creation of the Glen Haven/Retreat Community Wildfire Protection Plan.

GLEN HAVEN/RETREAT AREA CWPP

VALUES AT RISK AND PRIORITY DETERMINATION

Glen Haven/The Retreat CWPP
Values and Priorities

Structures

- 1) Historical/archeological structures - H
- 2) Homes - H
- 3) Businesses/local economy - H
- 4) Fire house and storage barn - H

Infrastructure

- 5) Above-ground fuel storage/individual propane tanks - L
- 6) Utilities - M
- 7) Roads/selective access - H
- 8) Bridges - H
- 9) Evacuation route development - H
- 10) Community-owned vehicles – L
- 11) Fire Department vehicles - H

Natural Resources

- 12) Rivers and streams/Riparian areas - H
- 13) Scenic beauty - H
- 14) Wildlife - H
- 15) Forested areas - H
- 16) Recreation/access to backcountry - H
- 17) USFS picnic area - L
- 18) Community-owned open space – H

Seasonal Camps

- 19) Cheley Girl's Camp - M
- 20) Cheley Boy's Camp - M
- 21) Youth United - L

Intrinsic Values

- 22) Life - H
- 23) Sense of community identity - H
- 24) Independence - M
- 25) Maintaining property values/investments - H
- 26) Serenity/solitude - H
- 27) Health and Public Safety – H

H= High Priority Value

M= Medium Priority Value

L= Low Priority Value

GLEN HAVEN/RETREAT CWPP
ACTION PLAN ACTIVITIES AND PROJECTS

Glen Haven/The Retreat CWPP
Action Plan Activities

Fire Department Actions/Projects

- Water storage development in two locations at The Retreat and one location in Glen Haven
- Repair of the existing water storage facility (14,000 gal) in Glen Haven
- Placement of (at least) two more dry fire hydrants in Glen Haven, ideally also in The Retreat
- Create access space for fire apparatus wherever possible
 - Turn-around/turn out space
 - Pull-off drafting areas
 - Space for portable dump tanks
 - Room to place apparatus alongside roadways
- Proper signage (addresses, evacuation route signs, road signs)
- Enhance the helispot accessibility, to both aircraft and ground transportation
- Posted weight limits on roads and bridges
- Establishment of safety zones
- Implementation of property/structure wildfire triage process

General Community Actions/Projects

- Creation of defensible space around all structures
- Management of riparian vegetation to improve fire department access and reduction of dead/ladder fuels
- Completion of details for evacuation plan
- Developing educational materials for landowners on Firewise concepts, forest health issues, insect and disease problems, preparing for emergency evacuation, etc.
- Creation of fuel breaks where appropriate
- Adequate access for fire equipment in driveways (overhead clearance and driveway width), including private culverts and bridges that have inadequate weight limits
- Addressing dead and currently infested trees due to Mountain Pine Beetle and other aesthetic concerns that pose a fire hazard
- Evaluate and determine weight limits on roads and bridges
- Address issues with locked, private gates to homes and trails
- Educate landowners on county restrictions and required permits for burning piles or performing a prescribed burn on their land
- Develop a community slash pile program for community members
- Identify areas on National Forest land adjacent to the community for fuels reduction treatment

GLEN HAVEN/RETREAT CWPP

COMMUNITY ACTION PLAN PRIORITIES AND DESCRIPTIONS

GLEN HAVEN CWPP COMMUNITY ACTION PLAN

May, 2007

PRIORITY 1: WILDFIRE TRIAGE EVALUATION

This Action item is defined as a process for the Community and the Glen Haven Area Volunteer Fire Dept. (GHAVFD) to identify and classify properties and structures regarding their potential for fire protection activities in the event of Wildfire. Structures will be inspected and “graded” based on the number of hazards contributing to high risk from Wildfire, and on activities undertaken to mitigate those risks. Three colors will be used to classify properties and structures. A GREEN designation will be used to identify those properties that present low risk in terms of firefighter safety and fire protection activities and where a high probability of success can be expected. YELLOW will indicate that a property presents some risk(s) to firefighter safety, and/or has prohibitive factors which may jeopardize successful firefighting operations. A RED designation will apply to properties that have high risk factors so numerous, or insurmountable in nature, that safe fire operations cannot be conducted.

Property owners will be encouraged to meet with GHAVFD personnel and conduct property inspections to identify risks, mitigation activities which are appropriate, and to become familiar with other programs and activities which can ensure a higher likelihood of successful fire protection for their property. Educational materials will be made available, the Glen Haven Area Evacuation Plan (EPLAN) will be reviewed, creation of defensible space will be explained, additional resources will be identified and Safety Zones will be discussed and created during these inspections.

The timeline for this Action Item is current and on-going. There will be no completion date defined. The process will commence during the Spring and Summer of 2007.

Funding requirements for this Action Item will be satisfied with monies provided through the Homeowner’s Associations, the GHAVFD and the Community Assistance grant provided through the National Park Service. Costs are expected to be associated with such things as EPLAN brochure development, various educational handout materials, creating a database of those properties triaged and printing costs.

PRIORITY 2: ACCESS

Access for Firefighting Apparatus is the next priority Action Item. As one of the tasks to be performed during the triage process, access to public and private property and maneuverability issues will be evaluated. Locked gates, proper signage for roads and addresses, driveway lengths and widths, weight limit assessments/signage for public and private bridges/culverts, and helispot locations are to be evaluated. Association roads will be carefully evaluated for the creation of “turn-around” locations for fire apparatus, space to move apparatus to the roadside and areas where portable water tanks can be located. Private properties will be evaluated for their accessibility from roads, size of driveways, room available at the structure end and egress problems.

Those areas and properties that present unacceptable or inadequate access will be defined. Corrective measures will be identified and evaluated for cost analysis.

The timeline for this Action Item is open-ended. The process will begin Spring 2007 and continue until all deficiencies have been identified and corrected. Associated costs are unknown at this time. A review of the activities undertaken and the information resulting will occur during the Fall/Winter of 2007, at which time funding requirements will be identified.

PRIORITY 3: FUELS MANAGEMENT

Fuels Management in the Glen Haven CWPP includes the following activities: management of the riparian environment throughout the Glen Haven, Retreat and surrounding area, creation of fuel breaks on both public and private lands, identification of dead and dying trees, continuing the slash chipping programs in both of the HOA's, management of ladder fuels on private properties, community identification of desired fuels projects on Federal lands, and procurement of burn permits to help eliminate slash in the area.

Many of these activities have already been undertaken. Others will be started as manpower availability and educational activities increase. During the Spring and Summer of 2007, riparian issues will begin, chipping and slash control will continue, ladder fuels will be identified through the triage process and some applications for Wintertime burn permits will be submitted. Fuel breaks and fuel projects on Federal lands will be identified during Fall and Winter of 2007 and early Spring of 2008.

Funding requirements will be associated with chipping operations and slash removal during 2007. Colorado State Forest Service and National Park Service grants will be used with funding from the community to accomplish these activities in 2007. Funding requirements for the projects identified during the coming Fall, Winter and Spring are unknown at this time and will be identified during the next review of the CWPP.

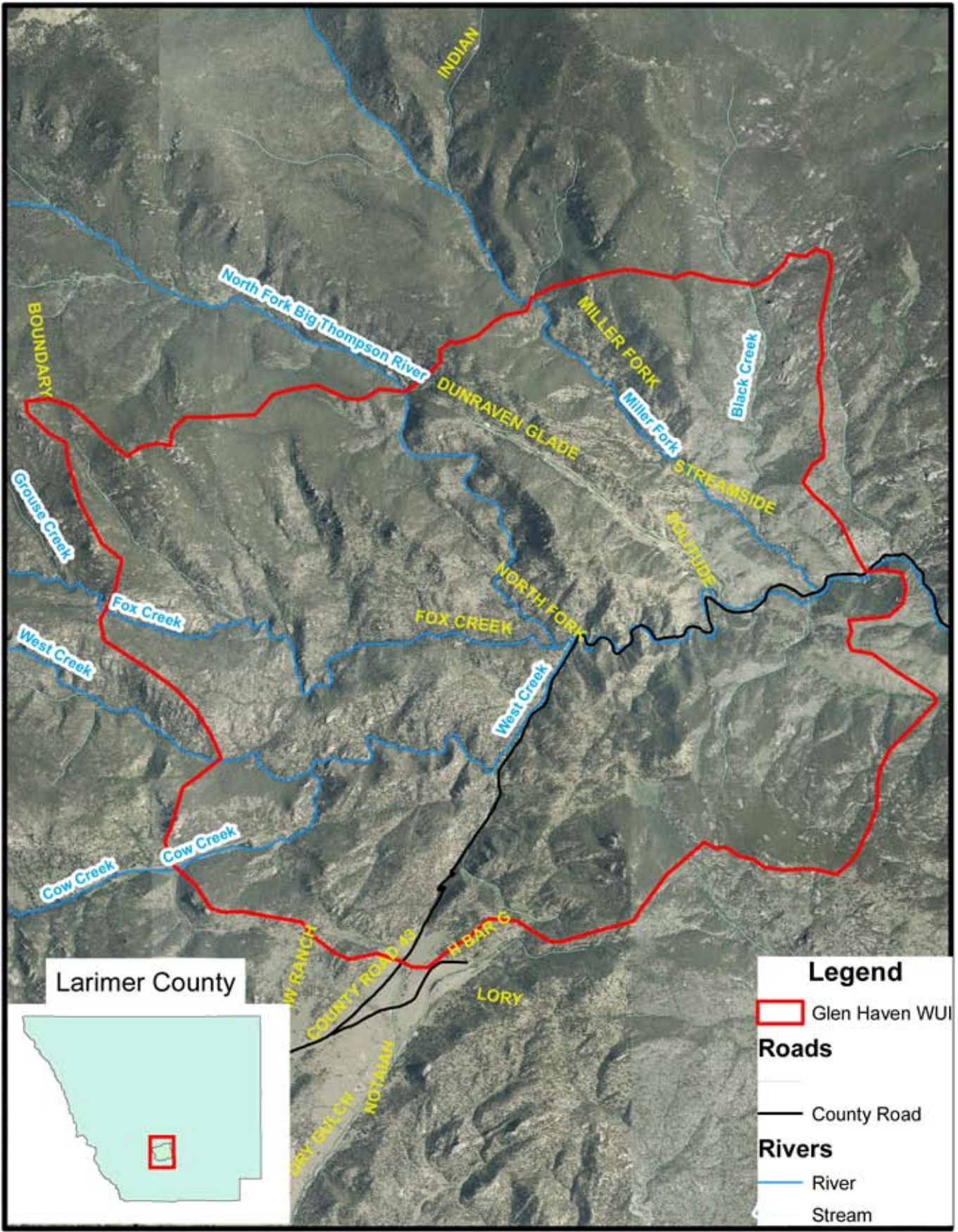
PRIORITY 4: WATER STORAGE

Water storage activities will include the creation of two (2) permanent water storage facilities in the Retreat, one (1) additional facility in Glen Haven, evaluation and repair of the existing storage facility in downtown Glen Haven, and installation of additional dry hydrants in and around the entire area.

The timeline goal is to complete at least one of the Retreat area storage facilities and the repair of the existing Glen Haven facility during Summer, 2007. Additional projects may be implemented in 2007 if funding allows.

Cost estimates are currently being solicited for these projects, and it is anticipated that approximately \$5000 will be required for the first Retreat Storage facility, \$1500 will be required to repair the existing facility, and approximately \$1000 will be required for each dry hydrant location. Any funds remaining after expenditures on the higher priority Action Items described previously will be utilized for the Water Storage activities. Funding sources for all incomplete storage projects will be sought through future grant applications by each of the HOA's and the GHAVFD.

Glen Haven CWPP



Legend

- Glen Haven WUI
- Roads**
 - County Road
- Rivers**
 - River
 - Stream

